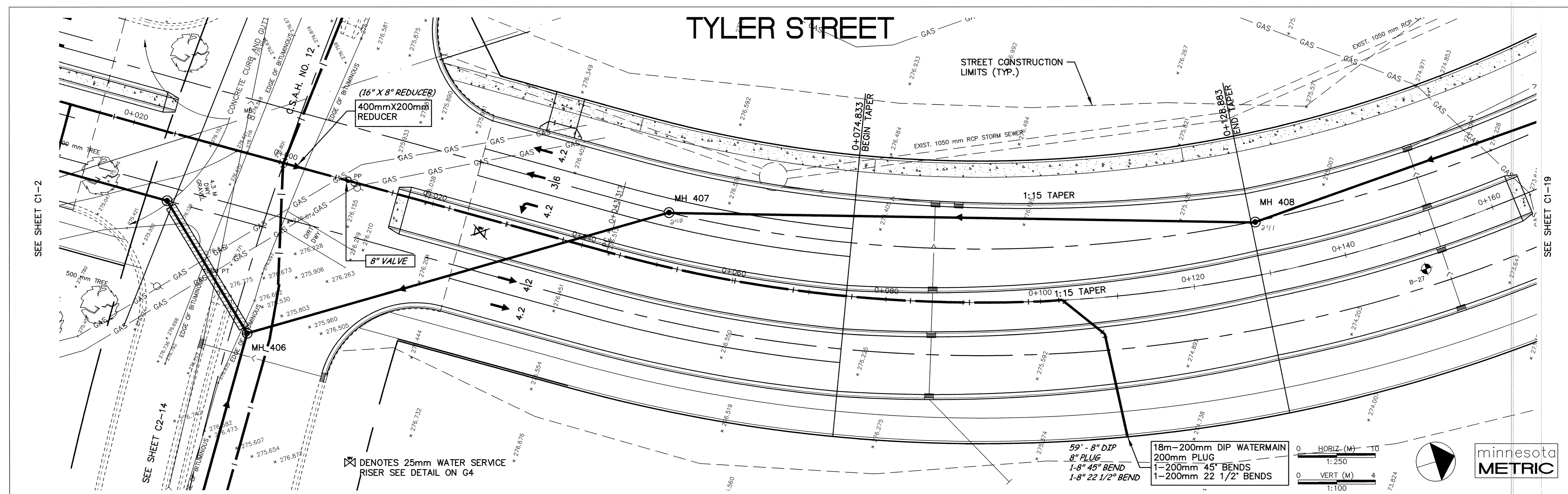
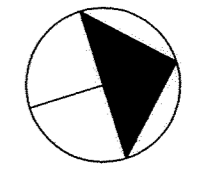
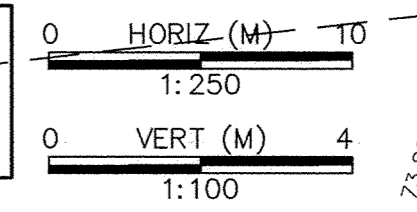


TYLER STREET

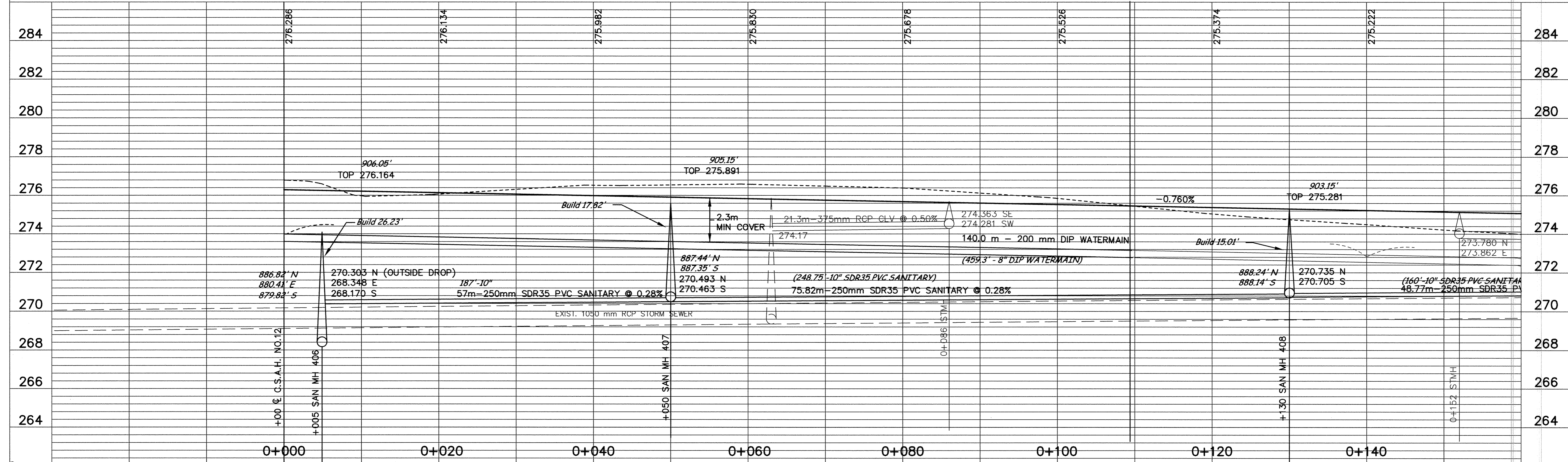


☒ DENOTES 25mm WATER SERVICE RISER SEE DETAIL ON G4

18m-200mm DIP WATERMAIN
 200mm PLUG
 1-200mm 45° BENDS
 1-200mm 22 1/2° BENDS



minnesota
METRIC



DESIGNED BY: AB JOB DATE: SEPT 1998
 DRAWN BY: [Signature] JOB NUMBER: 800110J
 APPROVED: [Signature] CAD DATE:
 CAD FILE: February 08, 1999 11:23:11 a.m.
 800110j\dwgs\NORTH_TYLER\01.DWG

I HEREBY CERTIFY THAT THIS PLAN, SPECIFICATION,
 OR REPORT WAS PREPARED BY ME OR UNDER MY DIRECT
 SUPERVISION AND THAT I AM A DULY REGISTERED
 PROFESSIONAL ENGINEER UNDER THE LAWS OF THE
 STATE OF MINNESOTA.
 DATE _____ REG. NO. _____

NO.	DATE	BY	REVISION DESCRIPTION
1	1-21-99	PH	REVISED WM SIZE C.O. NO. 1

Howard R. Green Company
 CONSULTING ENGINEERS
 1326 ENERGY PARK DRIVE
 ST. PAUL, MINNESOTA 55108
 (612) 644-4389

CITY OF ELK RIVER
 EASTERN AREA
 PHASE I IMPROVEMENTS

STREET AND UTILITY IMPROVEMENTS
 TYLER STREET
 0+000 TO 0+140

SHEET NO.
C1-18

MINNESOTA PROFESSIONAL ENGINEERS BOARD REGISTRATION NO. 200110J
 STATE OF MINNESOTA PROFESSIONAL ENGINEERS BOARD REGISTRATION NO. 200110J
 STATE OF MINNESOTA PROFESSIONAL ENGINEERS BOARD REGISTRATION NO. 200110J