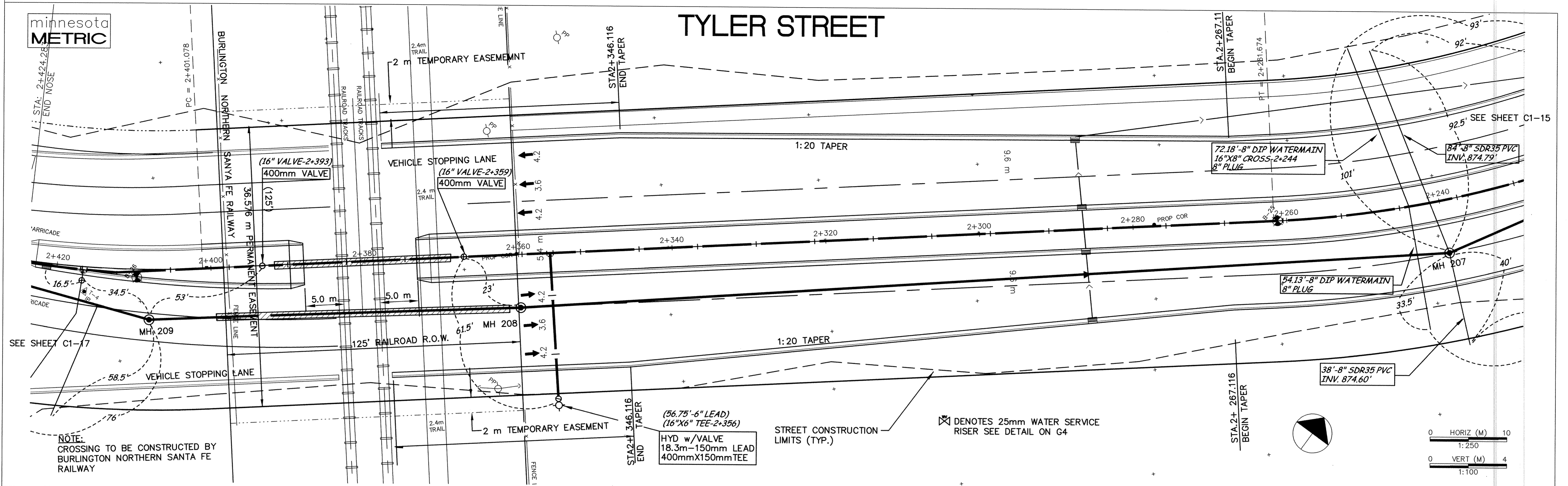


# TYLER STREET

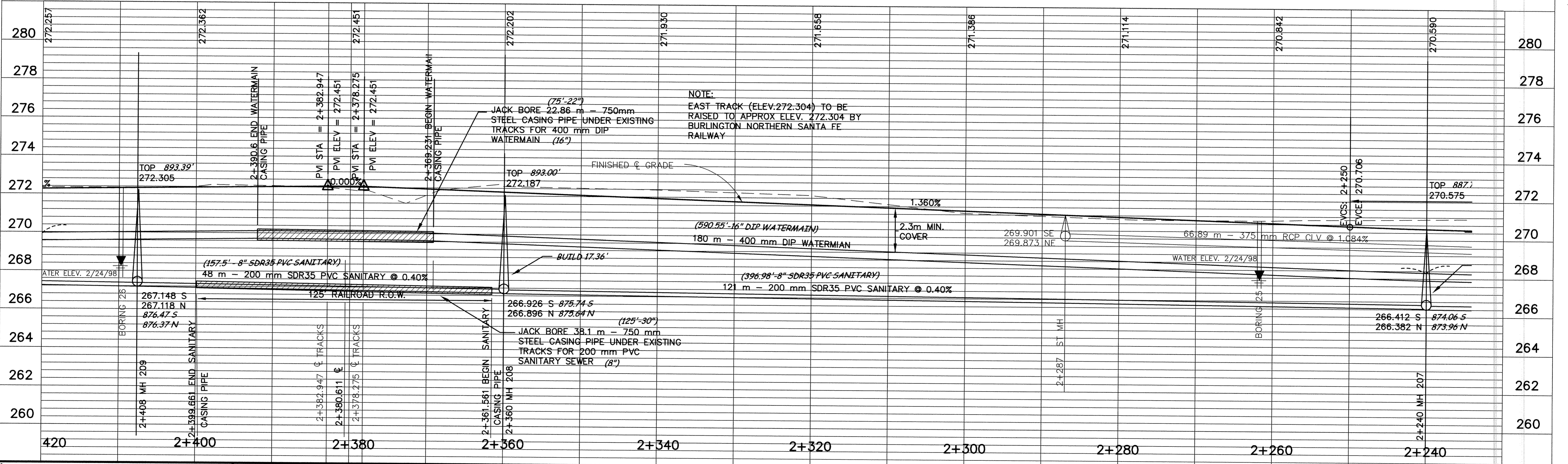
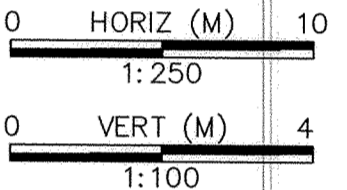
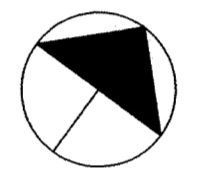


NOTE:  
CROSSING TO BE CONSTRUCTED BY  
BURLINGTON NORTHERN SANTA FE  
RAILWAY

(56.75'-6" LEAD)  
(16"X6" TEE-2+356)  
HYD w/VALVE  
18.3m-150mm LEAD  
400mmX150mm TEE

STREET CONSTRUCTION  
LIMITS (TYP.)

✕ DENOTES 25mm WATER SERVICE  
RISER SEE DETAIL ON G4



NOTE:  
EAST TRACK (ELEV.272.304) TO BE  
RAISED TO APPROX ELEV. 272.304 BY  
BURLINGTON NORTHERN SANTA FE  
RAILWAY

(75'-22")  
JACK BORE 22.86 m - 750mm  
STEEL CASING PIPE UNDER EXISTING  
TRACKS FOR 400 mm DIP  
WATERMAIN (16")

(125'-30")  
JACK BORE 38.1 m - 750 mm  
STEEL CASING PIPE UNDER EXISTING  
TRACKS FOR 200 mm PVC  
SANITARY SEWER (8")

DESIGNED BY: AB JOB DATE: MARCH 1998  
DRAWN BY: JOB NUMBER: 800110J  
APPROVED: CAD DATE:  
CAD FILE: October 08, 1998 2:17:00 p.m.  
800110j\Draws\Tyler\_BASE\15.DWG

I HEREBY CERTIFY THAT THIS PLAN, SPECIFICATION,  
OR REPORT WAS PREPARED BY ME OR UNDER MY DIRECT  
SUPERVISION AND THAT I AM A DULY REGISTERED  
PROFESSIONAL ENGINEER UNDER THE LAWS OF THE  
STATE OF MINNESOTA.  
DATE: 10/15/98 REG. NO.: 15316

| NO. | DATE | BY | REVISION DESCRIPTION |
|-----|------|----|----------------------|
|     |      |    |                      |
|     |      |    |                      |

**Howard R. Green Company**  
CONSULTING ENGINEERS  
1326 ENERGY PARK DRIVE  
ST. PAUL, MINNESOTA 55108  
(612) 644-4389

**CITY OF ELK RIVER**  
EASTERN AREA  
PHASE I IMPROVEMENTS

**STREET AND UTILITY IMPROVEMENTS**  
TYLER STREET  
2+240 TO 2+420

SHEET NO.  
**C1-16**