

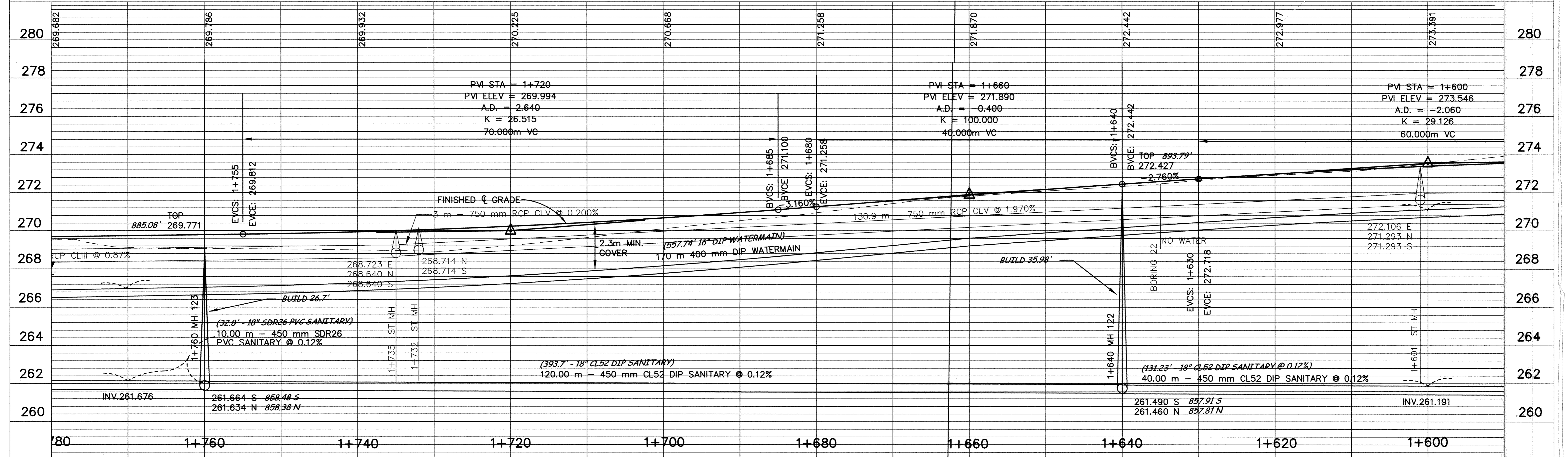
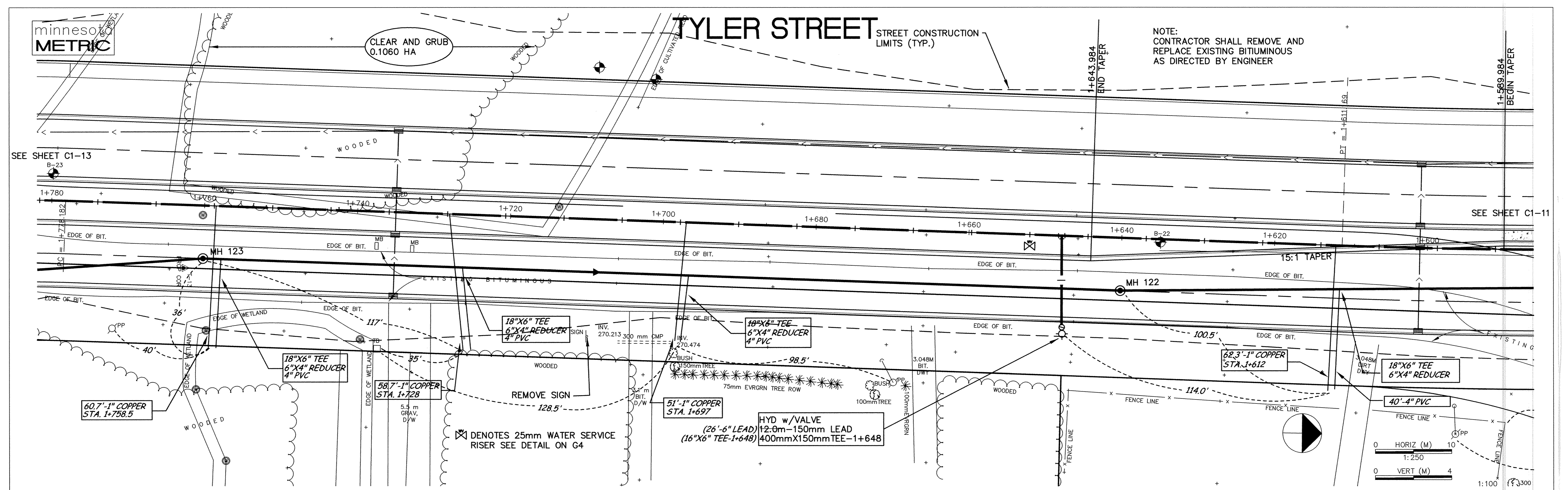
TYLER STREET

STREET CONSTRUCTION LIMITS (TYP.)

NOTE:
CONTRACTOR SHALL REMOVE AND
REPLACE EXISTING BITUMINOUS
AS DIRECTED BY ENGINEER

SEE SHEET C1-13
B-23

SEE SHEET C1-11



DESIGNED BY: AB JOB DATE: MARCH 1998
 DRAWN BY: [Signature] JOB NUMBER: 800110J
 APPROVED: [Signature] CAD DATE:
 CAD FILE: October 07, 1998 10:21:24 a.m.
 800110J\Drawgs\Tyler_BASE\11.DWG

I HEREBY CERTIFY THAT THIS PLAN, SPECIFICATION,
 OR REPORT WAS PREPARED BY ME OR UNDER MY DIRECT
 SUPERVISION AND THAT I AM A DULY REGISTERED
 PROFESSIONAL ENGINEER UNDER THE LAWS OF THE
 STATE OF MINNESOTA.
 DATE: 10/15/98 REG. NO.: 15316

NO.	DATE	BY	REVISION DESCRIPTION

1326 ENERGY PARK DRIVE
 ST. PAUL, MINNESOTA 55108
 (612) 644-4389
Howard R. Green Company
 CONSULTING ENGINEERS

CITY OF ELK RIVER
 EASTERN AREA
 PHASE I IMPROVEMENTS

STREET AND UTILITY IMPROVEMENTS
 TYLER STREET
 1+600 TO 1+770

SHEET NO.
C1-12