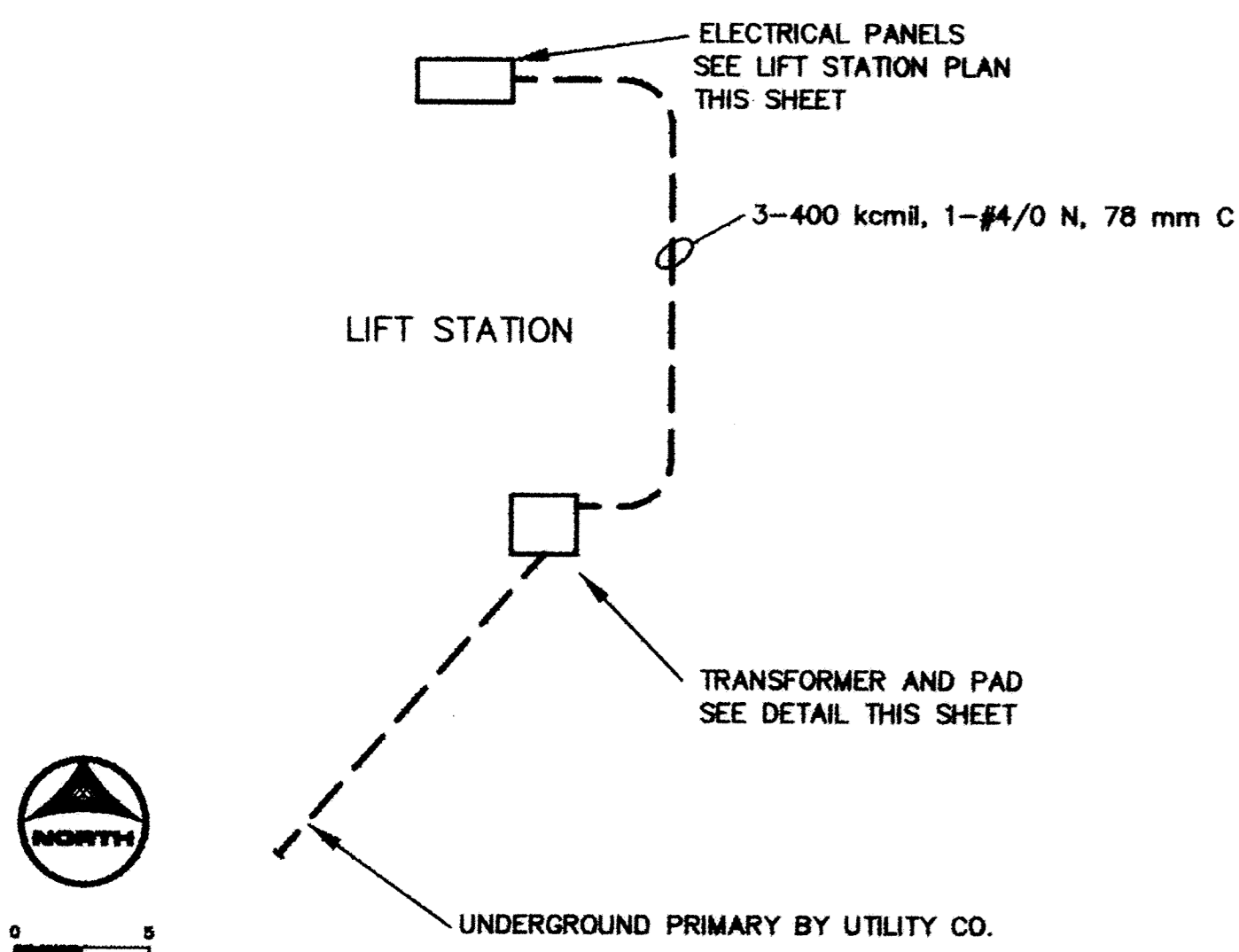


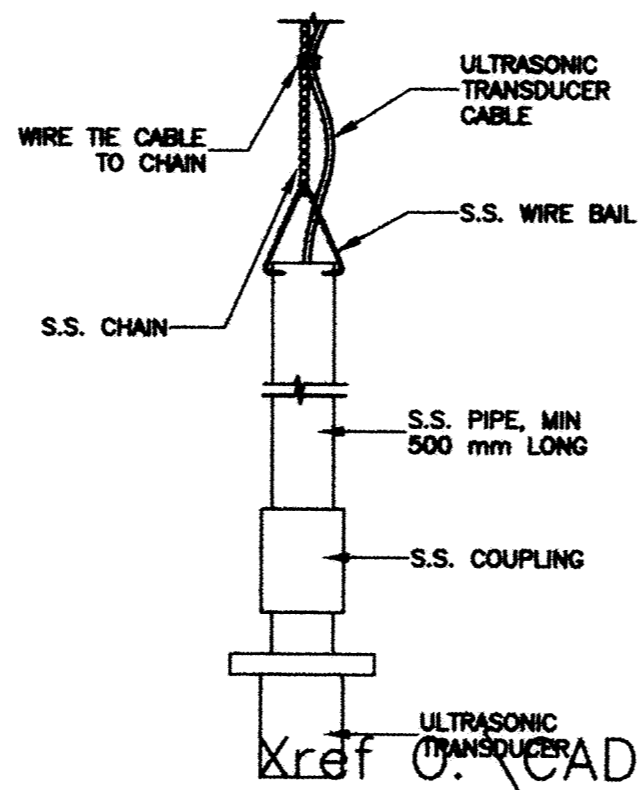
NOTES

- CLASS 1, DIVISION 1, GROUP D HAZARDOUS AREA EXISTS INSIDE THE WET WELL AND WITHIN A 1 M RADIUS OF VENT OPENING
- CLASS 1, DIVISION 2, GROUP D HAZARDOUS AREA EXISTS 1 M HORIZONTALLY FROM THE PERIMETER OF AND 500 mm ABOVE THE HATCH, AND WITHIN A 1.5 M RADIUS OF VENT OPENING
- ELECTRICAL UTILITY: ELK RIVER MUNICIPAL UTILITIES, CONTACT: GLEN SUNDEEN 612-441-2212
- MINIMUM BURIAL DEPTH OF UNDERGROUND CONDUITS/CIRCUITS: 0.75 M BELOW FINISHED GRADE.
- GENERATOR INLET: CROUSE HINDS TYPE AR2042 S-22 WITH ANGLE ADAPTER.



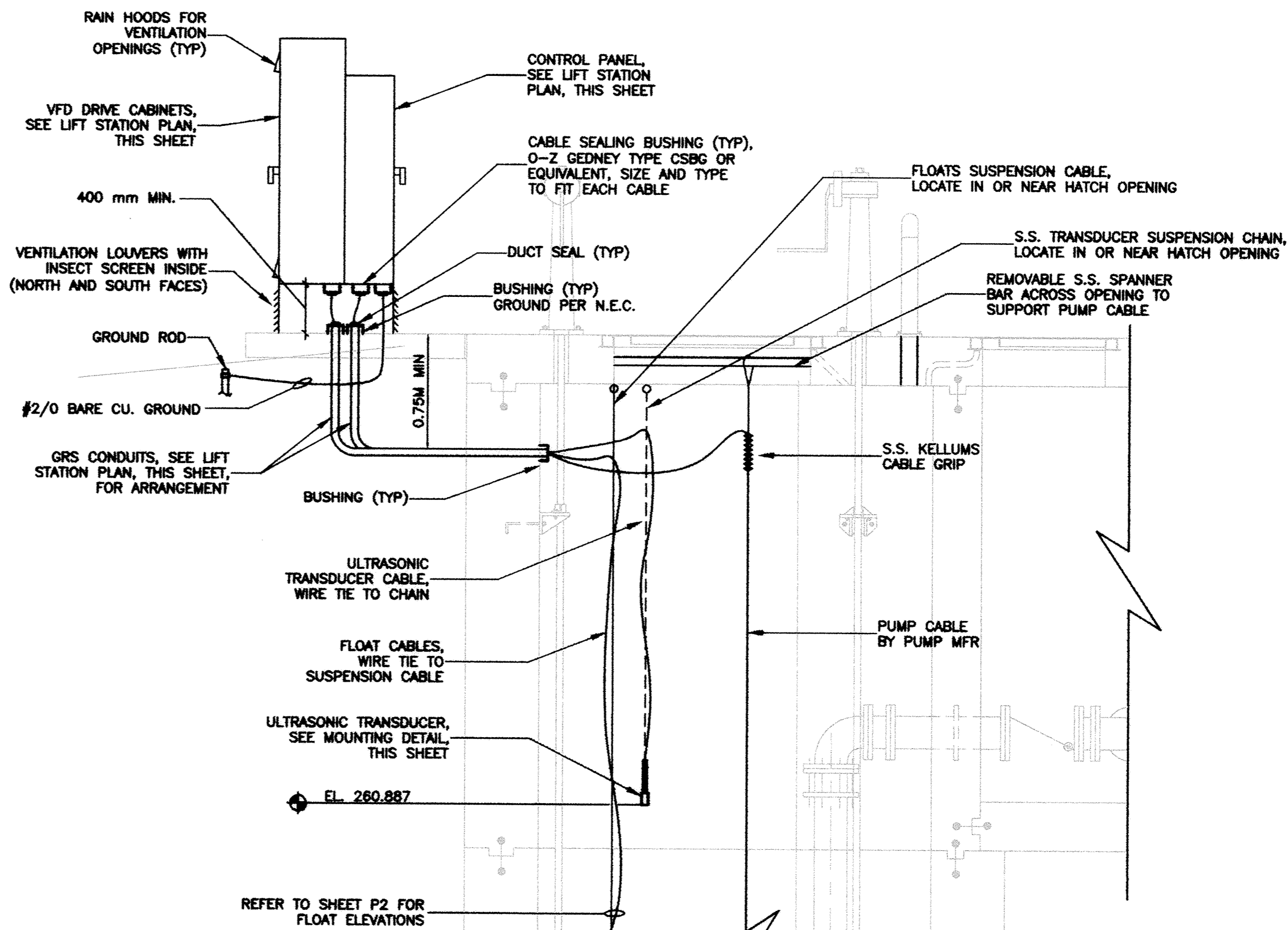
1 ELECTRICAL SITE PLAN

SCALE: 1:500



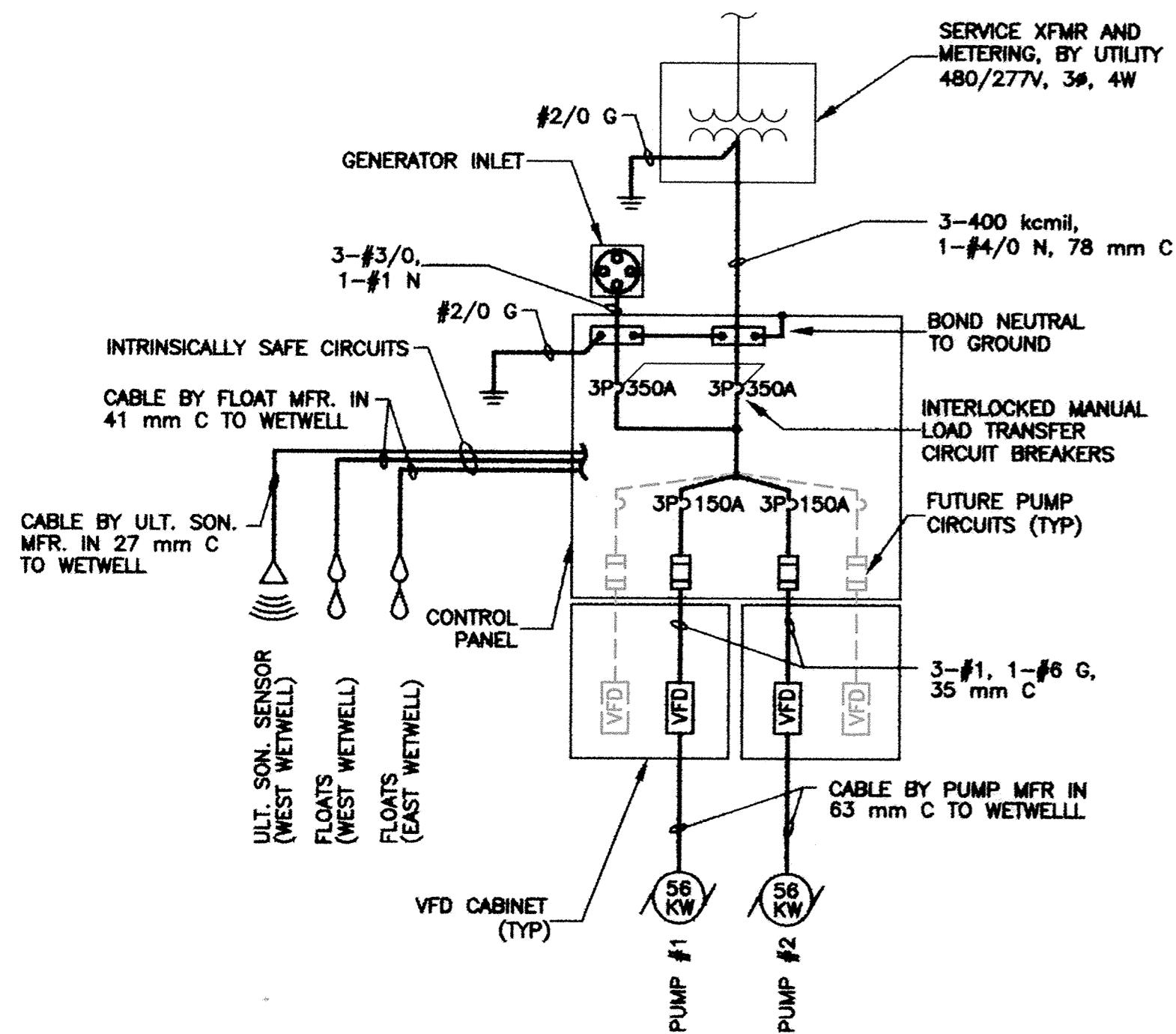
6 TRANSDUCER MOUNTING DETAIL

SCALE: NTS



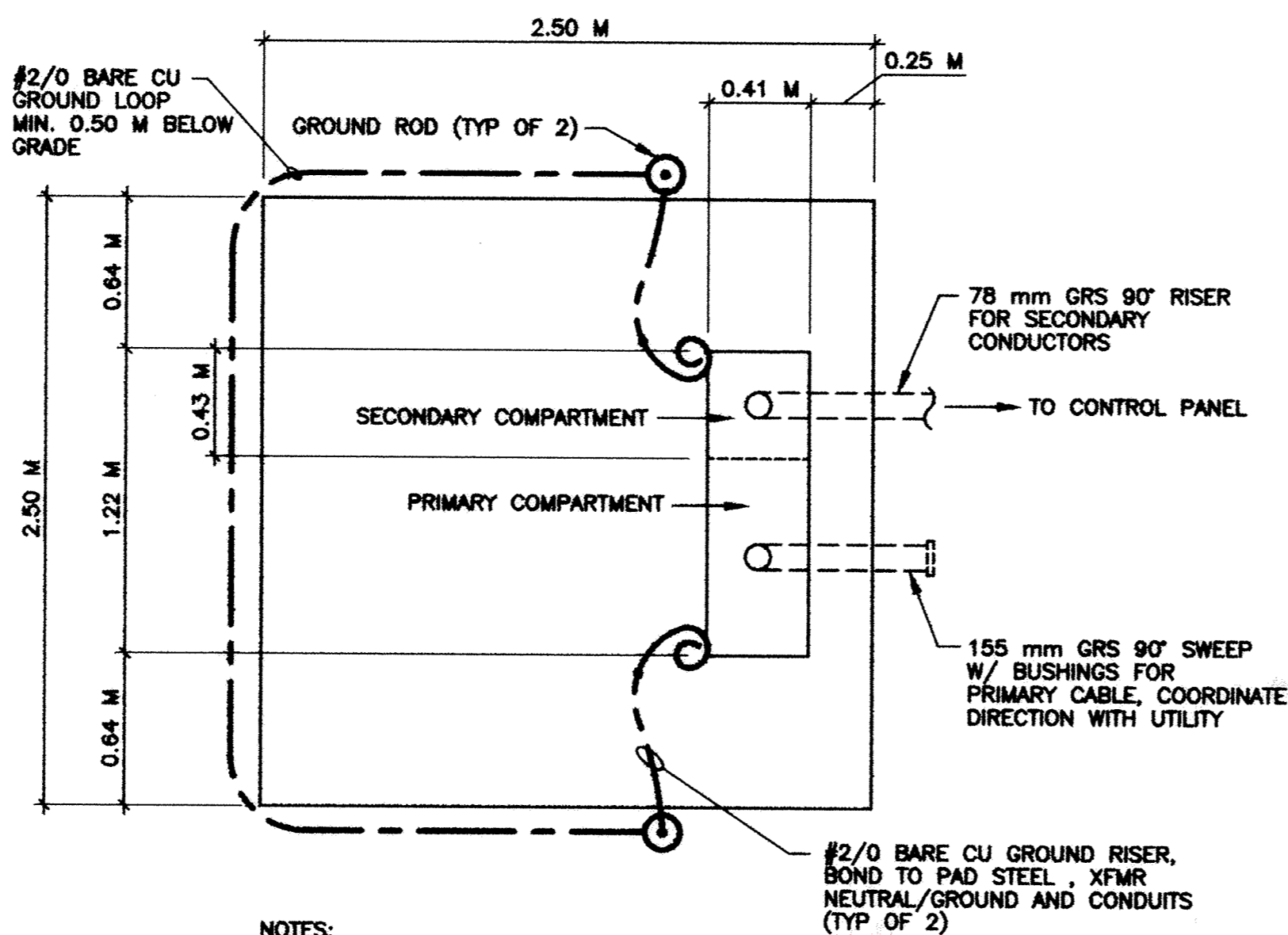
2 LIFT STATION SECTION (TYP)

SCALE: NTS



5 ONE-LINE DIAGRAM

SCALE: NTS

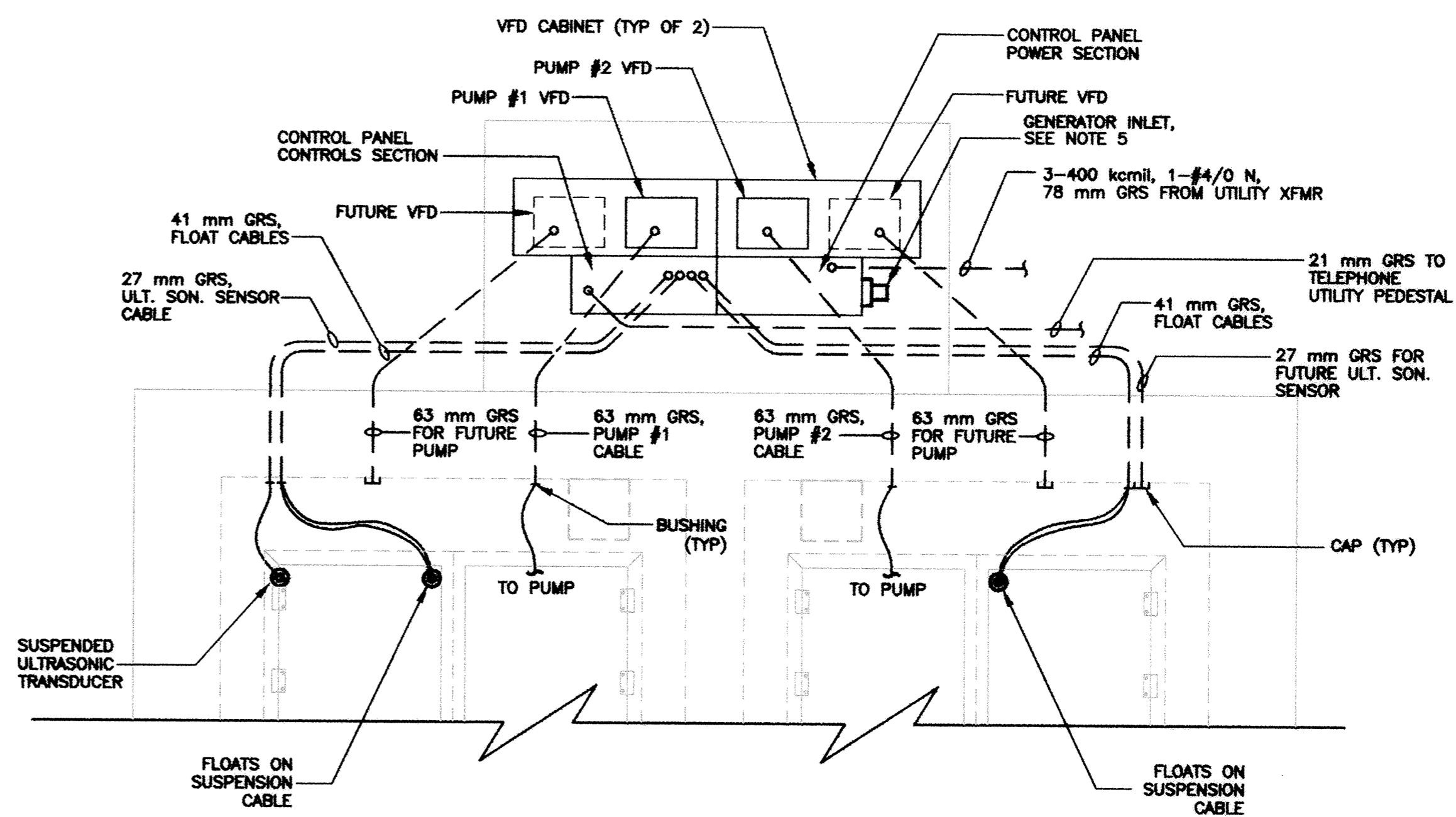


4 TRANSFORMER PAD DETAIL

SCALE: NTS

NOTES

- CONTRACTOR SHALL PROVIDE CONCRETE PAD, GROUNDING EQUIPMENT AND CONDUIT, UTILITY SHALL PROVIDE AND SET TRANSFORMER.
- CONTRACTOR SHALL PROVIDE SECONDARY CONDUCTORS, UTILITY SHALL PROVIDE PRIMARY CABLE AND TERMINATIONS OF ALL CONDUCTORS.
- PAD TO BE 0.15 M THICK OF 28,000 KPA CONCRETE. PROVIDE 15M REINFORCING AT 0.02 M O.C. EACH WAY.
- COORDINATE ALL ELECTRICAL SERVICE INSTALLATION WITH UTILITY.



3 LIFT STATION PLAN

SCALE: 1:50

DESIGNED BY: SRJ JOB DATE: JULY 1998
 DRAWN BY: CMB JOB NUMBER: 800110
 CAD DATE: October 14, 1998 4:15:50 p.m.
 CAD FILE: 800110j\dwg\LIFT_STATION\E\LE1.DWG

I HEREBY CERTIFY THAT THIS PLAN, SPECIFICATION, OR REPORT WAS PREPARED BY ME OR UNDER MY DIRECT SUPERVISION AND THAT I AM A DULY REGISTERED PROFESSIONAL ENGINEER UNDER THE LAWS OF THE STATE OF MINNESOTA.
 DATE: _____ REG. NO. _____

NO.	DATE	BY	REVISION DESCRIPTION

1326 ENERGY PARK DRIVE
 ST. PAUL, MINNESOTA 55108
 (612) 644-4389
Howard R. Green Company
 CONSULTING ENGINEERS

CITY OF ELK RIVER
LIFT STATION

ELECTRICAL

SHEET NO.
LE1

SH&D PRODUCTIONS • 1400 LARSEN AVENUE, MINNETONKA, MN 55345
 PROJECT NO. 800110 - ELK RIVER LIFT STATION
 SHEET NO. LE1 OF 171
 DATE: 10/14/98
 DRAWN BY: CMB
 CHECKED BY: SRJ
 DESIGNED BY: SRJ
 PROJECT: ELK RIVER LIFT STATION ELECTRICAL