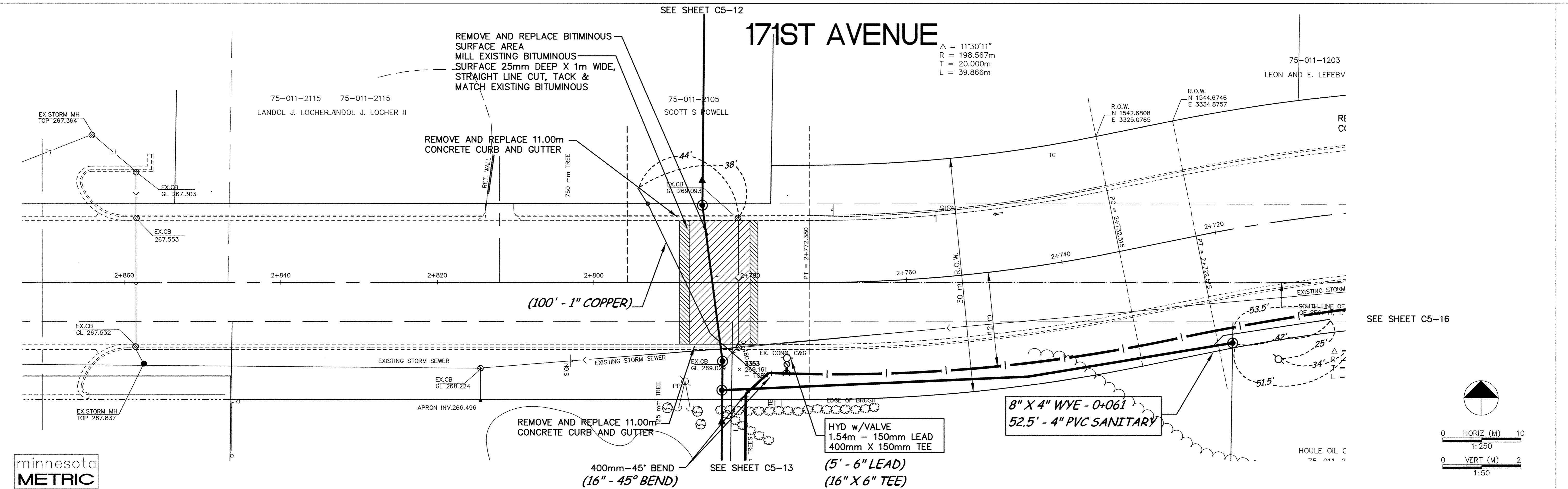
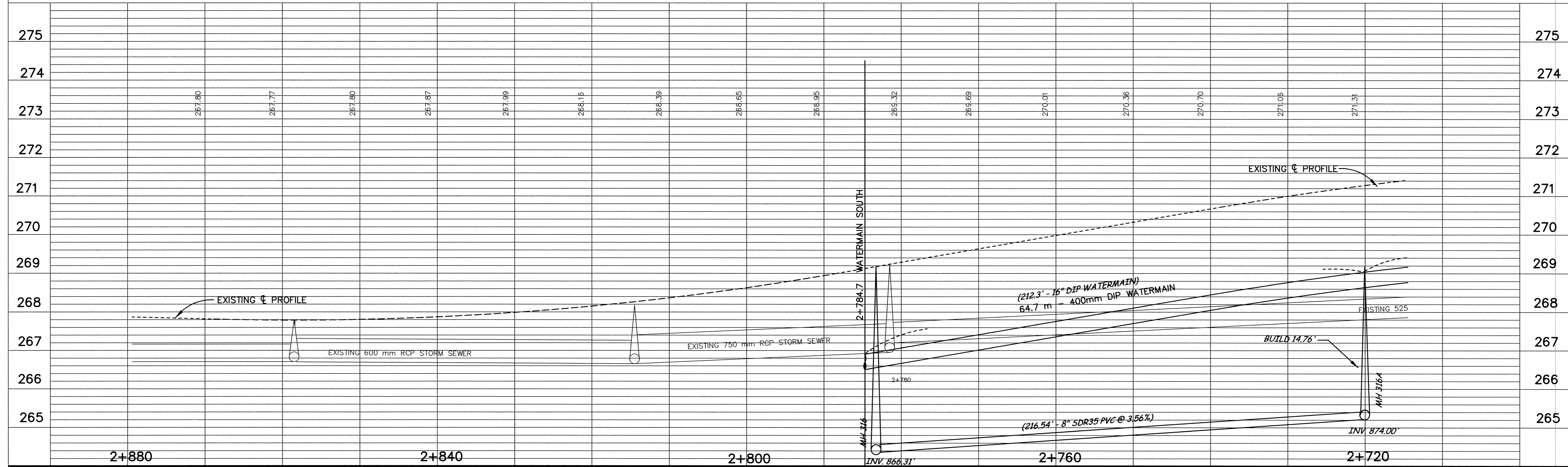
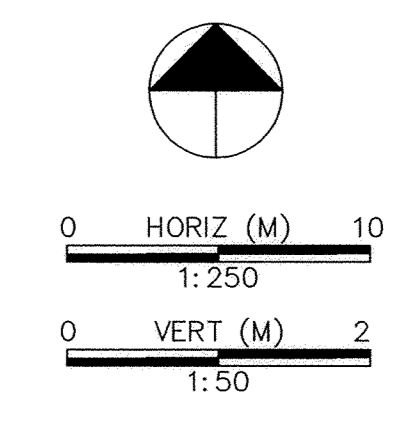


# 171ST AVENUE

$\Delta = 11'30''11''$   
 $R = 198.567m$   
 $T = 20.000m$   
 $L = 39.866m$



minnesota  
METRIC



DESIGNED BY: AB JOB DATE: AUG 1998  
 DRAWN BY: [Signature] JOB NUMBER: 800110J  
 APPROVED: [Signature] CAD DATE: [Blank]  
 CAD FILE: October 14, 1998 2:42:49 p.m.  
 800110\dwg\171ST\_WATERMAIN\C1-18.DWG

I HEREBY CERTIFY THAT THIS PLAN, SPECIFICATION,  
 OR REPORT WAS PREPARED BY ME OR UNDER MY DIRECT  
 SUPERVISION AND THAT I AM A DULY REGISTERED  
 PROFESSIONAL ENGINEER UNDER THE LAWS OF THE  
 STATE OF MINNESOTA.  
 DATE 10/15/98 REG. NO. 15316

NO.	DATE	BY	REVISION DESCRIPTION

  
**Howard R. Green Company**  
 CONSULTING ENGINEERS  
 1326 ENERGY PARK DRIVE  
 ST. PAUL, MINNESOTA 55108  
 (612) 644-4389

**CITY OF ELK RIVER**  
 EASTERN AREA  
 PHASE I IMPROVEMENTS

STREET AND UTILITY IMPROVEMENTS  
 171ST AVENUE  
 2+720 TO 2+880

SHEET NO.  
**C5-17**