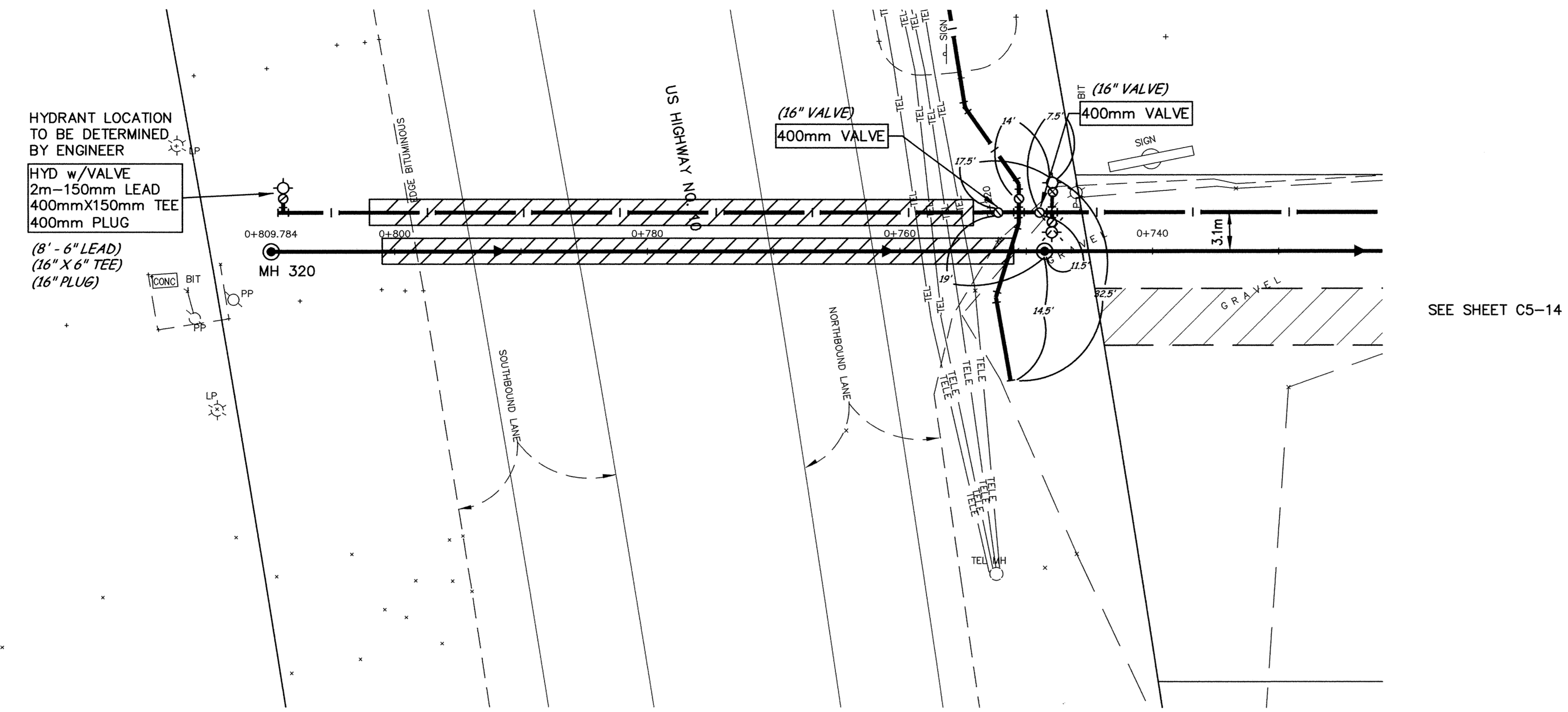


LOT LINE SOUTH OF 171ST AVENUE

SEE SHEET C4-15



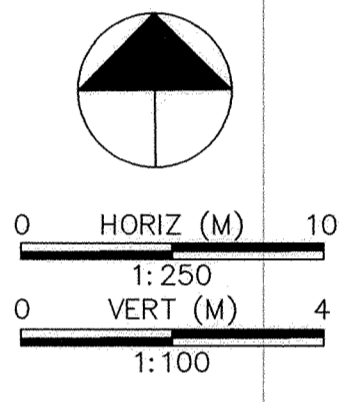
HYDRANT LOCATION TO BE DETERMINED BY ENGINEER

HYD w/VALVE
2m-150mm LEAD
400mmX150mm TEE
400mm PLUG

(8'-6" LEAD)
(16" X 6" TEE)
(16" PLUG)

SEE SHEET C5-14

minnesota
METRIC



Station	Sanitary Sewer	Watermain	Notes
0+840			
0+820			
0+800	0+801 END SANITARY SEWER CASING PIPE	0+802 END WATERMAIN CASING PIPE	
0+780			JACK BORE 48 m - 750 mm STEEL CASING PIPE UNDER EXISTING ROAD FOR 400 mm DIP WATERMAIN (16" DIP)
0+760			JACK BORE 50 m - 750 mm STEEL CASING PIPE UNDER EXISTING ROAD FOR 375 mm PVC (15" PVC) SANITARY SEWER
0+740	0+751 BEGIN SANITARY SEWER CASING PIPE	0+754 END WATERMAIN CASING PIPE	
0+720			
0+700			
0+680			
0+660			
0+640			
0+620			
0+600			
0+580			
0+560			
0+540			

DESIGNED BY: --- DRAWN BY: EY
 APPROVED: --- JOB NUMBER 800110J
 CAD DATE: June 18, 1999 10:17:49 a.m.
 CAD FILE: 800110j\dwgs\HWY_10\C5-15.DWG

I HEREBY CERTIFY THAT THIS PLAN, SPECIFICATION, OR REPORT WAS PREPARED BY ME OR UNDER MY DIRECT SUPERVISION AND THAT I AM A DULY REGISTERED PROFESSIONAL ENGINEER UNDER THE LAWS OF THE STATE OF MINNESOTA.

DATE 8/2/99 REG. NO. 15316

NO.	DATE	BY	REVISION DESCRIPTION
1	8/2/99	EY	REV. SANITARY AND WATERMAIN ALIGNMENT



Howard R. Green Company
CONSULTING ENGINEERS

1326 ENERGY PARK DRIVE
ST. PAUL, MINNESOTA 55108
(612) 644-4389

CITY OF ELK RIVER
EASTERN AREA
PHASE I IMPROVEMENTS

TRUNK WATERMAIN AND
SANITARY SEWER IMPROVEMENTS
LOT LINE SOUTH OF 171ST AVENUE
0+748.546 TO 0+809.117

SHEET NO.
C5-15

SACO PRODUCTS • NEW HOPE, MINNESOTA
 REPORT BY PART NUMBER 8928
 SACO PRODUCTS • NEW HOPE, MINNESOTA
 REPORT BY PART NUMBER 8928
 SACO PRODUCTS • NEW HOPE, MINNESOTA
 REPORT BY PART NUMBER 8928
 SACO PRODUCTS • NEW HOPE, MINNESOTA
 REPORT BY PART NUMBER 8928
 SACO PRODUCTS • NEW HOPE, MINNESOTA
 REPORT BY PART NUMBER 8928