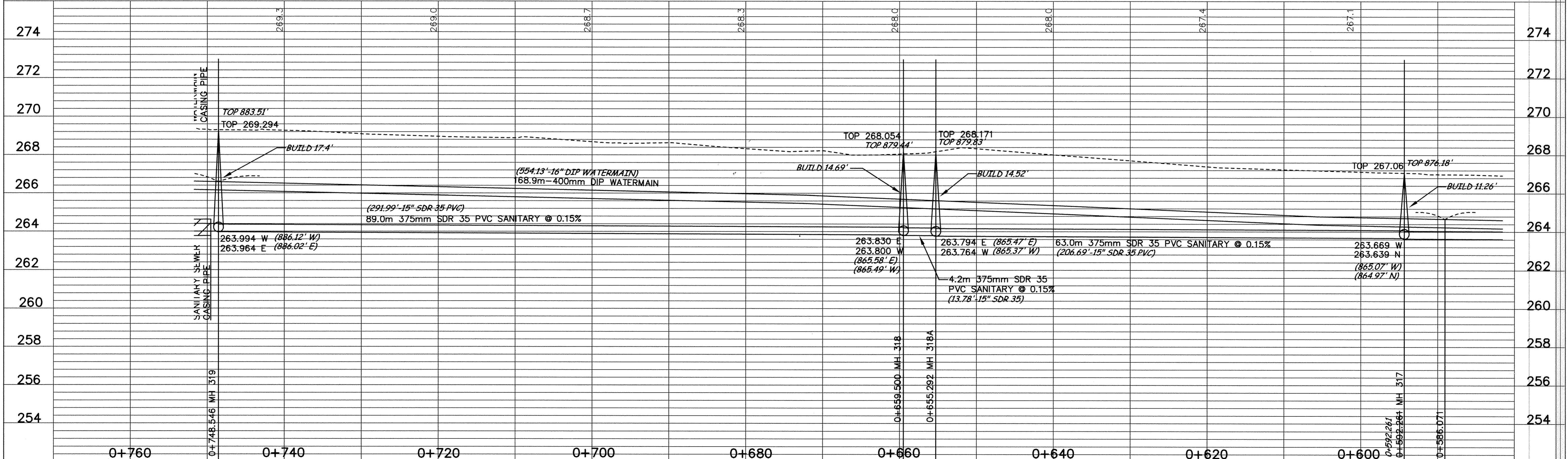
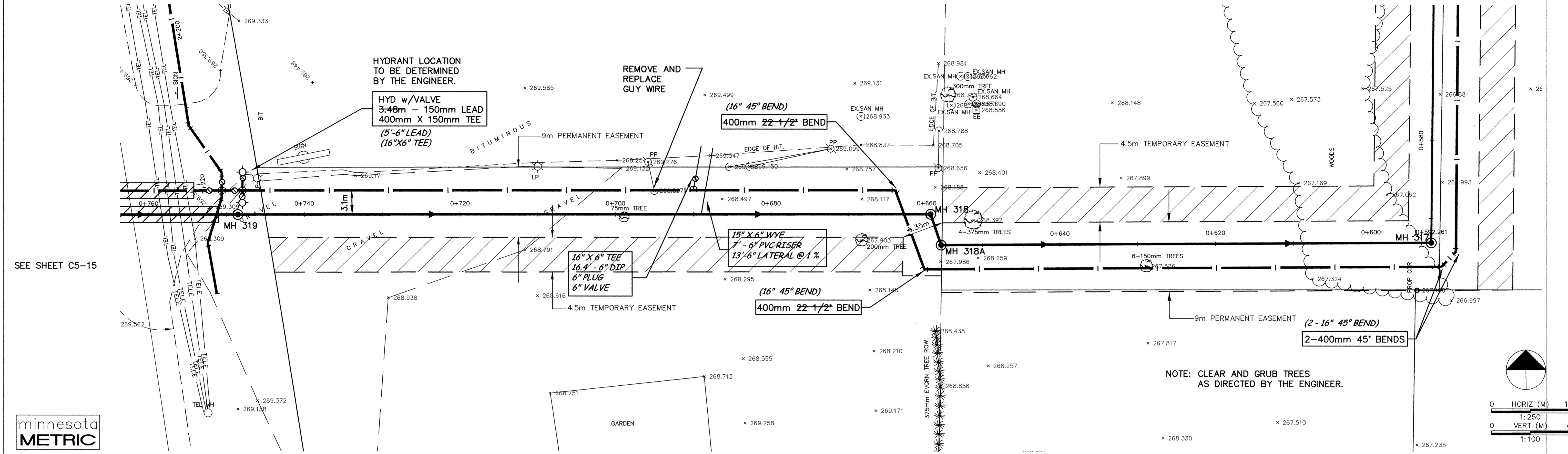


# LOT LINE SOUTH OF 171ST AVENUE

SEE SHEET C4-15

SEE SHEET C5-13



DESIGNED BY: --- DRAWN BY: EY  
 APPROVED: --- JOB NUMBER 800110J  
 CAD DATE: June 18, 1999 10:19:29 a.m.  
 CAD FILE: 800110j\dwgs\HWY\_10\C5-14.DWG

I HEREBY CERTIFY THAT THIS PLAN, SPECIFICATION, OR REPORT WAS PREPARED BY ME OR UNDER MY DIRECT SUPERVISION AND THAT I AM A DULY REGISTERED PROFESSIONAL ENGINEER UNDER THE LAWS OF THE STATE OF MINNESOTA.  
 DATE 8/2/99 REG. NO. 15316

NO.	DATE	BY	REVISION DESCRIPTION
1	8/2/99	EY	REV. SANITARY AND WATERMAIN ALIGNMENT

1326 ENERGY PARK DRIVE  
 ST. PAUL, MINNESOTA 55108  
 (612) 644-4389  
**Howard R. Green Company**  
 CONSULTING ENGINEERS

**CITY OF ELK RIVER**  
 EASTERN AREA  
 PHASE I IMPROVEMENTS

**TRUNK WATERMAIN AND  
 SANITARY SEWER IMPROVEMENTS**  
 LOT LINE SOUTH OF 171ST AVENUE  
 0+589.071 TO 0+748.546

SHEET NO.  
**C5-14**