

TYLER STREET

STREET CONSTRUCTION LIMITS (TYP.)

CLEAR AND GRUB
2.82 HA

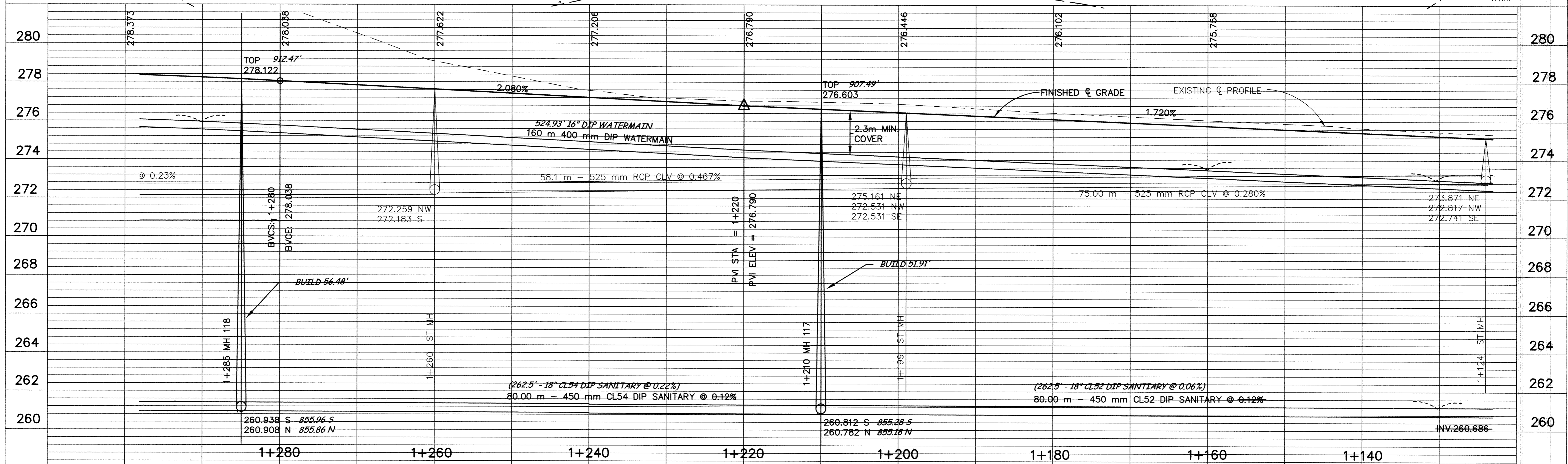
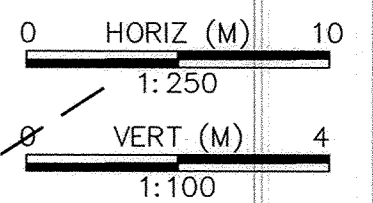
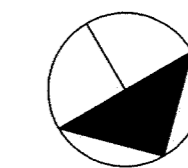
SEE SHEET C1-10

SEE SHEET C1-8

(25.75'-6" LEAD)
(16"X6" TEE)

7.894m
HYD w/VALVE
12.0m-150mm LEAD
400mmX150mm TEE-1+261.5

☒ DENOTES 25mm WATER SERVICE RISER SEE DETAIL ON G4



DESIGNED BY: AB JOB DATE: MARCH 1998
 DRAWN BY: [Signature] JOB NUMBER 800110J
 APPROVED: [Signature] CAD DATE: _____
 CAD FILE: March 11, 1999 11:01:39 a.m.
 800110J\Drawings\Tyler_BASE\08.DWG

I HEREBY CERTIFY THAT THIS PLAN, SPECIFICATION, OR REPORT WAS PREPARED BY ME OR UNDER MY DIRECT SUPERVISION AND THAT I AM A DULY REGISTERED PROFESSIONAL ENGINEER UNDER THE LAWS OF THE STATE OF MINNESOTA.
 DATE 10/15/98 REG. NO. 15316

NO.	DATE	BY	REVISION DESCRIPTION



Howard R. Green Company
CONSULTING ENGINEERS

1326 ENERGY PARK DRIVE
ST. PAUL, MINNESOTA 55108
(612) 644-4389

CITY OF ELK RIVER
EASTERN AREA
PHASE I IMPROVEMENTS

STREET AND UTILITY IMPROVEMENTS
TYLER STREET

1+130 TO 1+290

SHEET NO.
C1-9