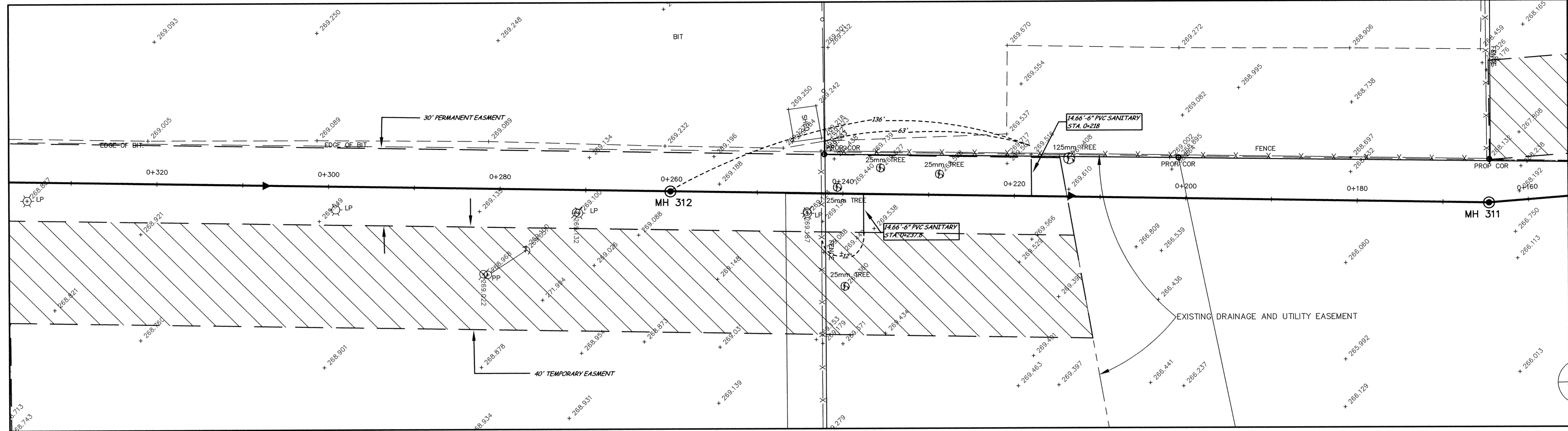
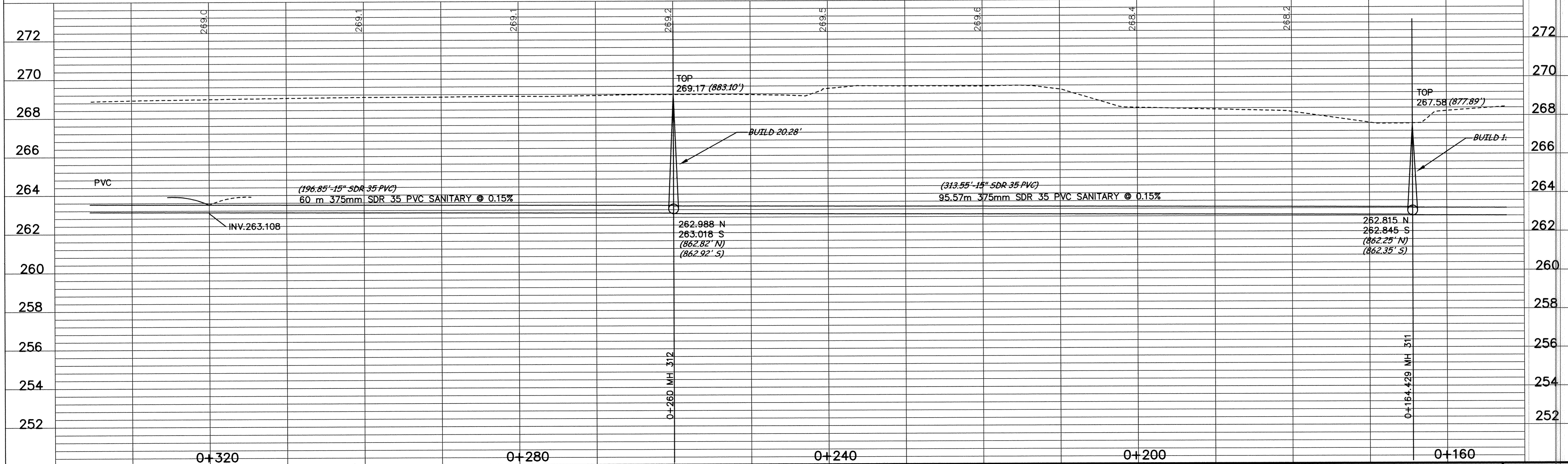
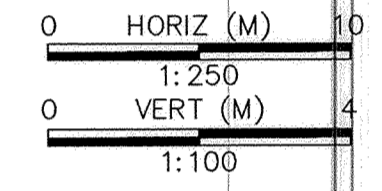


WEST LOT LINE RAIL 10 ADDITION



minnesota
METRIC



DESIGNED BY: --- DRAWN BY: EY
APPROVED: --- JOB NUMBER 800110J
CAD DATE: February 08, 1999 2:31:17 p.m.
CAD FILE: 800110J\Dwgs\HWY_10\C5-11.DWG

I HEREBY CERTIFY THAT THIS PLAN, SPECIFICATION, OR REPORT WAS PREPARED BY ME OR UNDER MY DIRECT SUPERVISION AND THAT I AM A DULY REGISTERED PROFESSIONAL ENGINEER UNDER THE LAWS OF THE STATE OF MINNESOTA.
DATE _____ REG. NO. 15316

NO.	DATE	BY	REVISION DESCRIPTION
1	1-19-99	PH	RE-ALIGN SANITARY SEWER

1326 ENERGY PARK DRIVE
ST. PAUL, MINNESOTA 55108
(612) 644-4389
Howard R. Green Company
CONSULTING ENGINEERS

CITY OF ELK RIVER
EASTERN AREA
PHASE I IMPROVEMENTS

**TRUNK WATERMAIN AND
SANITARY SEWER IMPROVEMENTS**
WEST LOT LINE RAIL 10 ADDITION
0+164.429 TO 0+320

SHEET NO.
C5-11

3D PRODUCTS • NEW HOPE, MINNESOTA
 REPRODUCED BY PART NUMBER 800110J
 3D PRODUCTS • NEW HOPE, MINNESOTA
 REPRODUCED BY PART NUMBER 800110J
 3D PRODUCTS • NEW HOPE, MINNESOTA
 REPRODUCED BY PART NUMBER 800110J
 3D PRODUCTS • NEW HOPE, MINNESOTA
 REPRODUCED BY PART NUMBER 800110J
 147