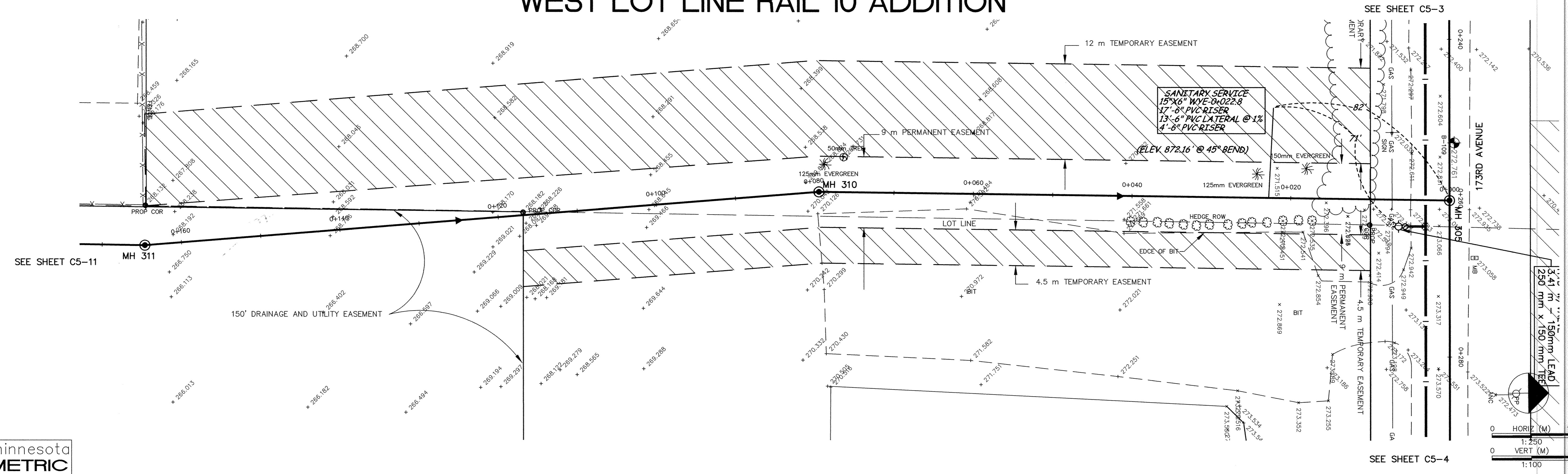
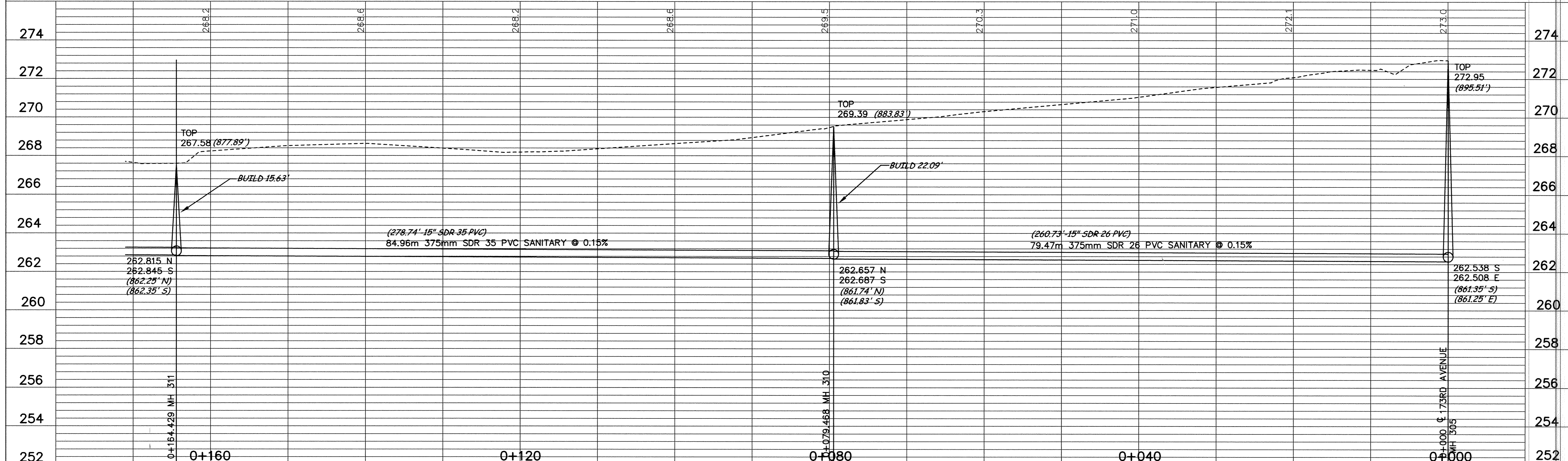


# WEST LOT LINE RAIL 10 ADDITION



minnesota  
**METRIC**



DESIGNED BY: --- DRAWN BY: EY  
 APPROVED: --- JOB NUMBER 800110J  
 CAD DATE: October 14, 1998 2:03:13 p.m.  
 CAD FILE: 800110\dwg\HWY\_10\C5-10.DWG

I HEREBY CERTIFY THAT THIS PLAN, SPECIFICATION, OR REPORT WAS PREPARED BY ME OR UNDER MY DIRECT SUPERVISION AND THAT I AM A DULY REGISTERED PROFESSIONAL ENGINEER UNDER THE LAWS OF THE STATE OF MINNESOTA.  
 DATE 10/15/98 REG. NO. 15316

NO.	DATE	BY	REVISION DESCRIPTION

1326 ENERGY PARK DRIVE  
 ST. PAUL, MINNESOTA 55108  
 (612) 644-4389  
**Howard R. Green Company**  
 CONSULTING ENGINEERS

**CITY OF ELK RIVER**  
 EASTERN AREA  
 PHASE I IMPROVEMENTS

**TRUNK WATERMAIN AND  
 SANITARY SEWER IMPROVEMENTS  
 WEST LOT LINE RAIL 10 ADDITION**  
 0+000 TO 0+164.429

SHEET NO.  
**C5-10**

SDCO PRODUCTS • NEW HOPE, MINNESOTA  
 REPORT BY PART NUMBER 8982  
 SDCO PRODUCTS • NEW HOPE, MINNESOTA  
 REPORT BY PART NUMBER 8982  
 SDCO PRODUCTS • NEW HOPE, MINNESOTA  
 REPORT BY PART NUMBER 8982  
 SDCO PRODUCTS • NEW HOPE, MINNESOTA  
 REPORT BY PART NUMBER 8982