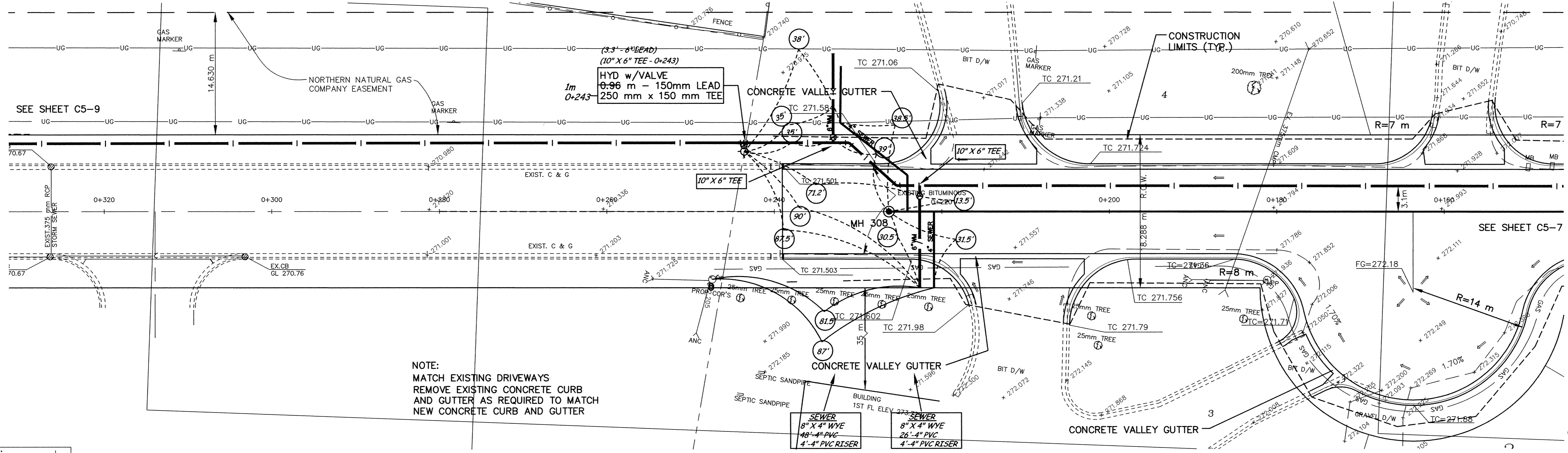
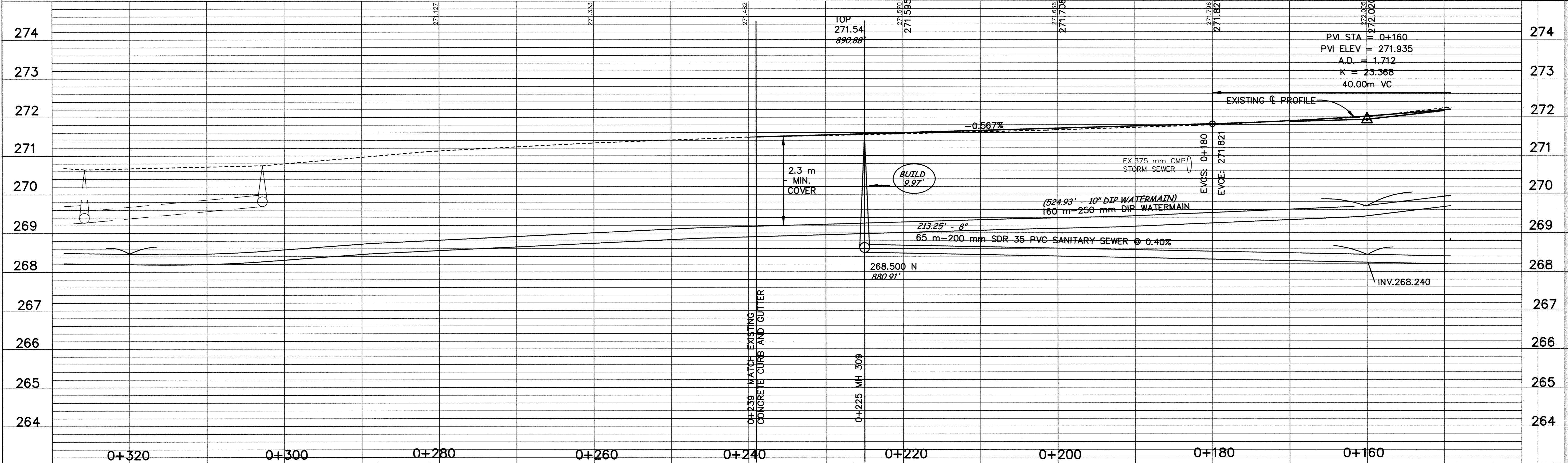
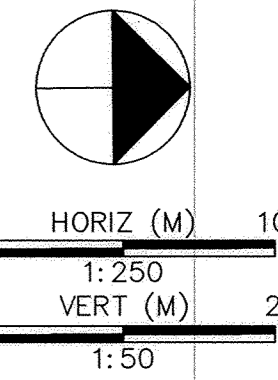


ULYSSES STREET



NOTE:
MATCH EXISTING DRIVEWAYS
REMOVE EXISTING CONCRETE CURB
AND GUTTER AS REQUIRED TO MATCH
NEW CONCRETE CURB AND GUTTER

minnesota
METRIC



DESIGNED BY: --- DRAWN BY: EY
APPROVED: --- JOB NUMBER 800110J
CAD DATE: April 04, 2001 11:19:48 a.m.
CAD FILE: 800110\AS-BUILTS\AS_HWY169_HWY10_173\RD\AS_C5-8.DWG

I HEREBY CERTIFY THAT THIS PLAN, SPECIFICATION,
OR REPORT WAS PREPARED BY ME OR UNDER MY DIRECT
SUPERVISION AND THAT I AM A DULY REGISTERED
PROFESSIONAL ENGINEER UNDER THE LAWS OF THE
STATE OF MINNESOTA.
REG. NO. 15316

NO.	DATE	BY	REVISION DESCRIPTION

1326 ENERGY PARK DRIVE
ST. PAUL, MINNESOTA 55108
(612) 644-4389
Howard R. Green Company
CONSULTING ENGINEERS

CITY OF ELK RIVER
EASTERN AREA
PHASE I IMPROVEMENTS

**TRUNK WATERMAIN AND
SANITARY SEWER IMPROVEMENTS
ULYSSES STREET**
0+160 TO 0+300

SHEET NO.
C5-8

SD&C PRODUCTS • NEW HOPE, MINNESOTA
 REORDER BY PART NUMBER 8552
 EASTE1.98