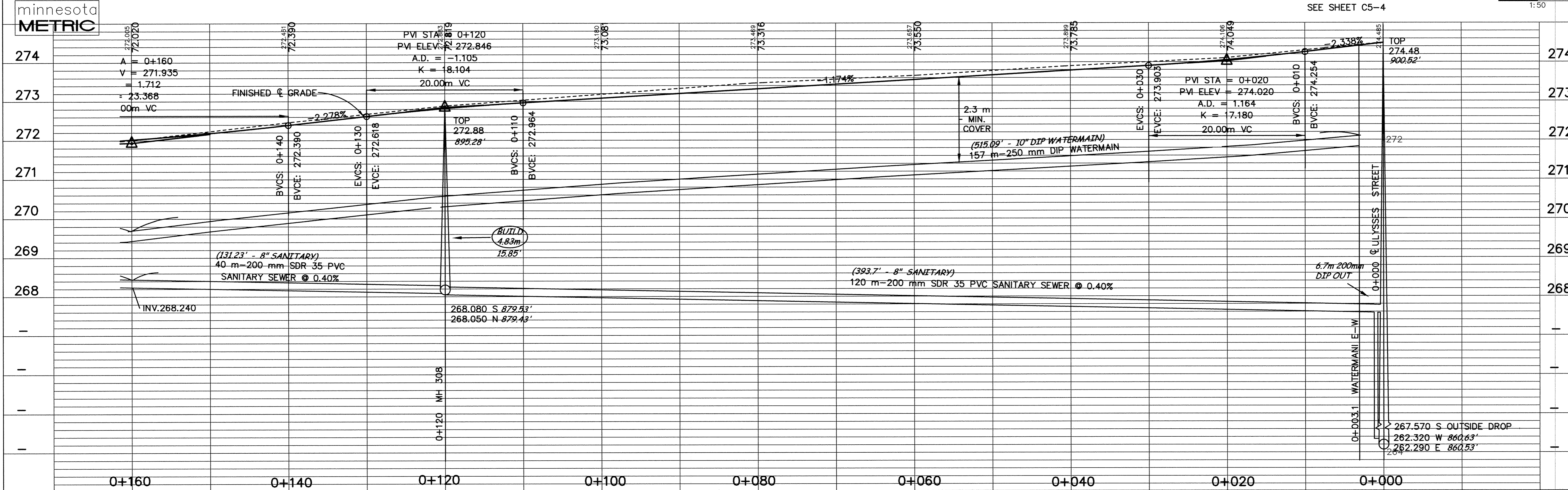
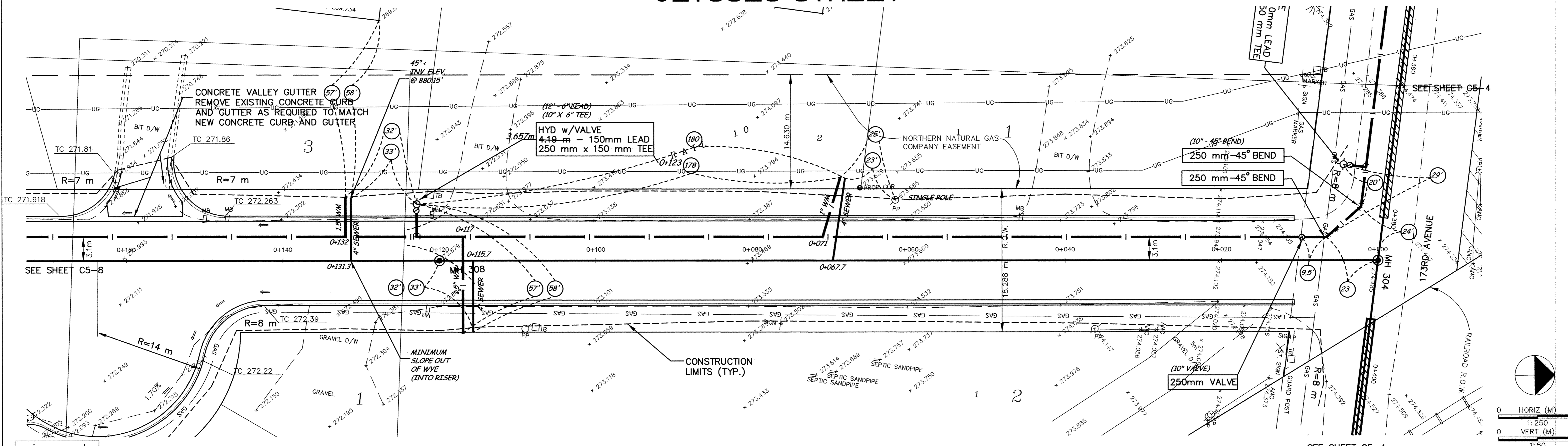


ULYSSES STREET



DESIGNED BY: --- DRAWN BY: EY
 APPROVED: --- JOB NUMBER 800110J
 CAD DATE: April 04, 2001 11:16:18 a.m.
 CAD FILE: 800110\AS-BUILTS_AS_HWY169_HWY10_17

I HEREBY CERTIFY THAT THIS PLAN, SPECIFICATION, OR REPORT WAS PREPARED BY ME OR UNDER MY DIRECT SUPERVISION AND THAT I AM A DULY REGISTERED PROFESSIONAL ENGINEER UNDER THE LAWS OF THE STATE OF MINNESOTA.
 DATE: 4/15/06 REG. NO. 15316

NO.	DATE	BY	REVISION DESCRIPTION

1326 ENERGY PARK DRIVE
 ST. PAUL, MINNESOTA 55108
 (612) 644-4389
Howard R. Green Company
 CONSULTING ENGINEERS

CITY OF ELK RIVER
 EASTERN AREA
 PHASE I IMPROVEMENTS

TRUNK WATERMAIN AND
 SANITARY SEWER IMPROVEMENTS
 ULYSSES STREET
 0+000 TO 0+160

SHEET NO.
C5-7

SD&CO PRODUCTS • NEW HOPE, MINNESOTA
 REORDER BY PART NUMBER 8552
 EASTE1.98