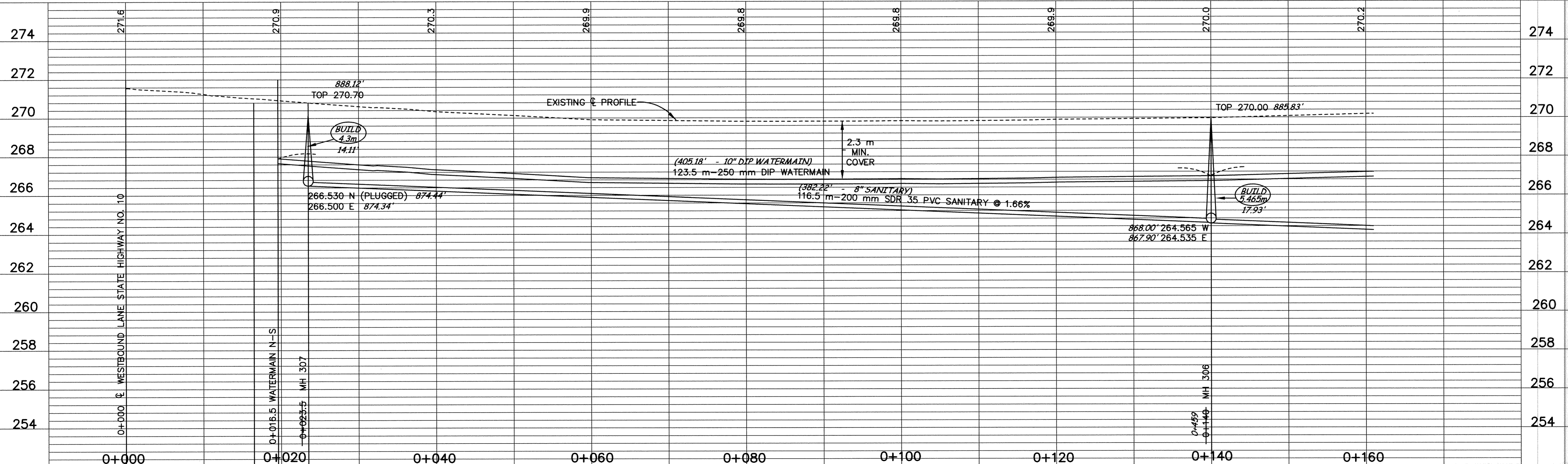
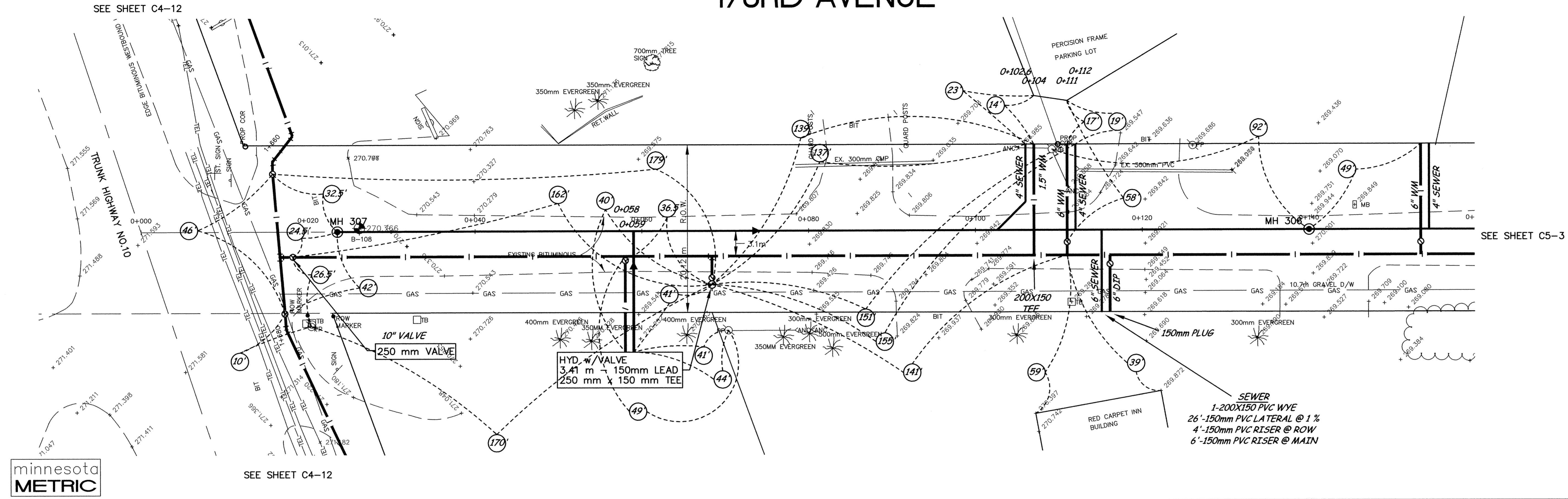


173RD AVENUE



DESIGNED BY: --- DRAWN BY: EY
 APPROVED: --- JOB NUMBER 800110J
 CAD DATE: April 05, 2001 11:46:10 a.m.
 CAD FILE: 800110J\AS-BUILTS\AS_HWY169_HWY10_173RD_AVE_C5-2.DWG

I HEREBY CERTIFY THAT THIS PLAN, SPECIFICATION, OR REPORT WAS PREPARED BY ME OR UNDER MY DIRECT SUPERVISION AND THAT I AM A DULY REGISTERED PROFESSIONAL ENGINEER UNDER THE LAWS OF THE STATE OF MINNESOTA.
 REG. NO. 15316

NO.	DATE	BY	REVISION DESCRIPTION

1326 ENERGY PARK DRIVE
 ST. PAUL, MINNESOTA 55108
 (612) 644-4389
Howard R. Green Company
 CONSULTING ENGINEERS

CITY OF ELK RIVER
EASTERN AREA
PHASE I IMPROVEMENTS

TRUNK WATERMAIN AND
SANITARY SEWER IMPROVEMENTS
173RD AVENUE
 0+000 TO 0+140

SHEET NO.
C5-2

SACCO PRODUCTS • NEW HARBOR, MINNESOTA
 REPRODUCED BY PART NUMBER 8058
 EASTE1198