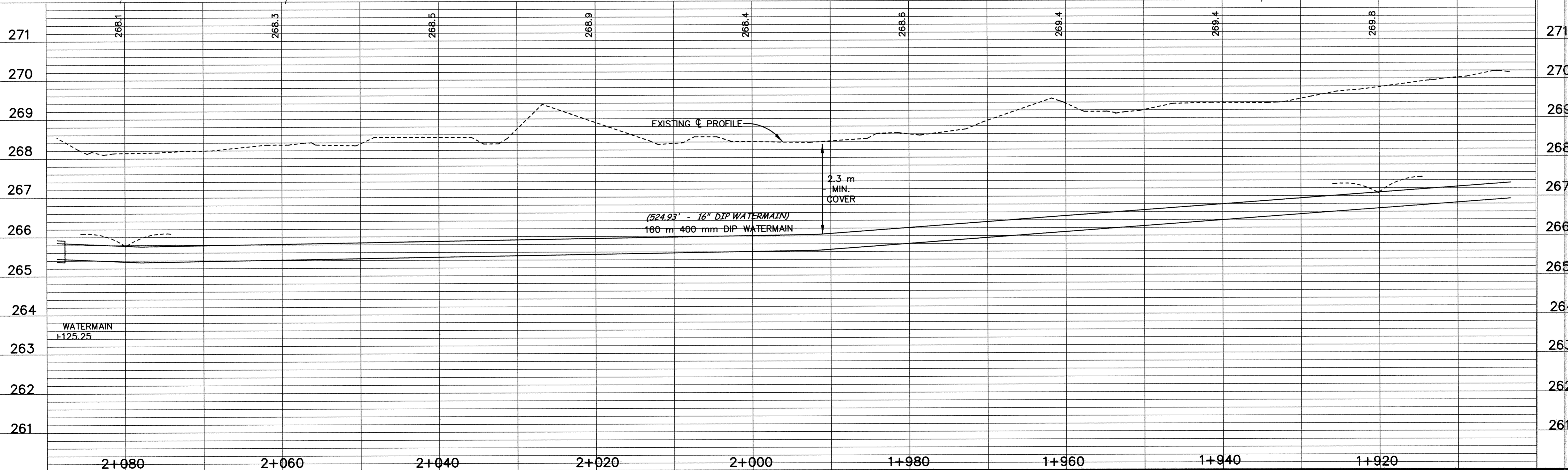
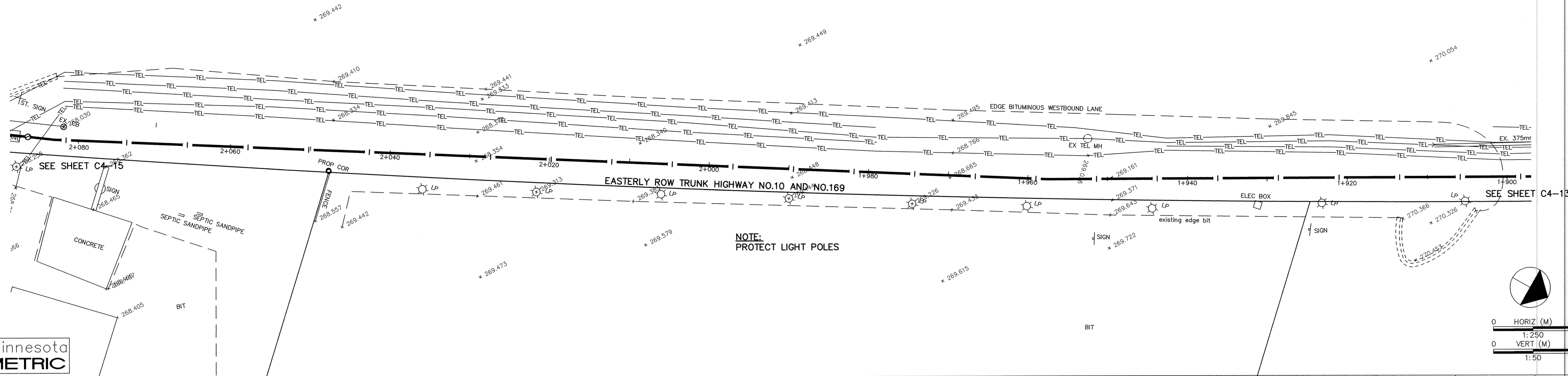


TRUNK HIGHWAY NO.10 AND NO.169



DESIGNED BY: --- DRAWN BY: EY
 APPROVED: --- JOB NUMBER 800110J
 CAD DATE: March 29, 2001 3:20:16 p.m.
 CAD FILE: 800110j\AS-BUILTS\AS-HWY169\AS-HWY_1014.DWG

I HEREBY CERTIFY THAT THIS PLAN, SPECIFICATION, OR REPORT WAS PREPARED BY ME OR UNDER MY DIRECT SUPERVISION AND THAT I AM A DULY REGISTERED PROFESSIONAL ENGINEER UNDER THE LAWS OF THE STATE OF MINNESOTA.
 DATE 10/15/98 REG. NO. 15316

NO.	DATE	BY	REVISION DESCRIPTION

Howard R. Green Company
 CONSULTING ENGINEERS
 1326 ENERGY PARK DRIVE
 ST. PAUL, MINNESOTA 55108
 (612) 644-4389

CITY OF ELK RIVER
 EASTERN AREA
 PHASE I IMPROVEMENTS

TRUNK WATERMAIN IMPROVEMENTS
 TRUNK HIGHWAY NO.10 AND NO.169
 1+920 TO 2+080

SHEET NO.
C4-14

SD&CO PRODUCTS - NEW HOPE, MINNESOTA
 REPRODUCED BY PART NUMBER 6558
 135