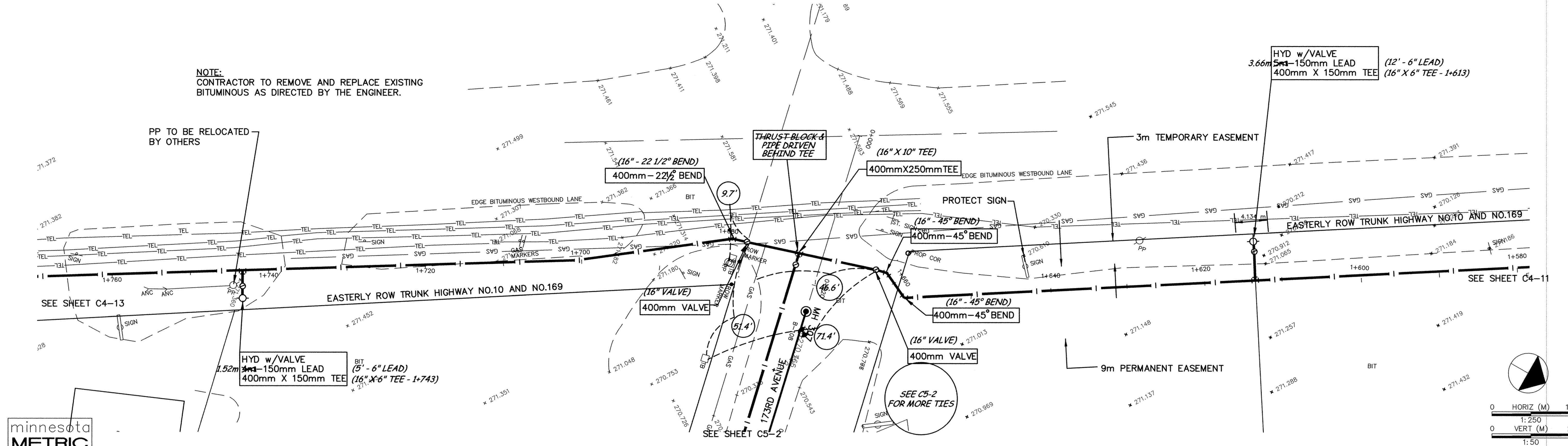
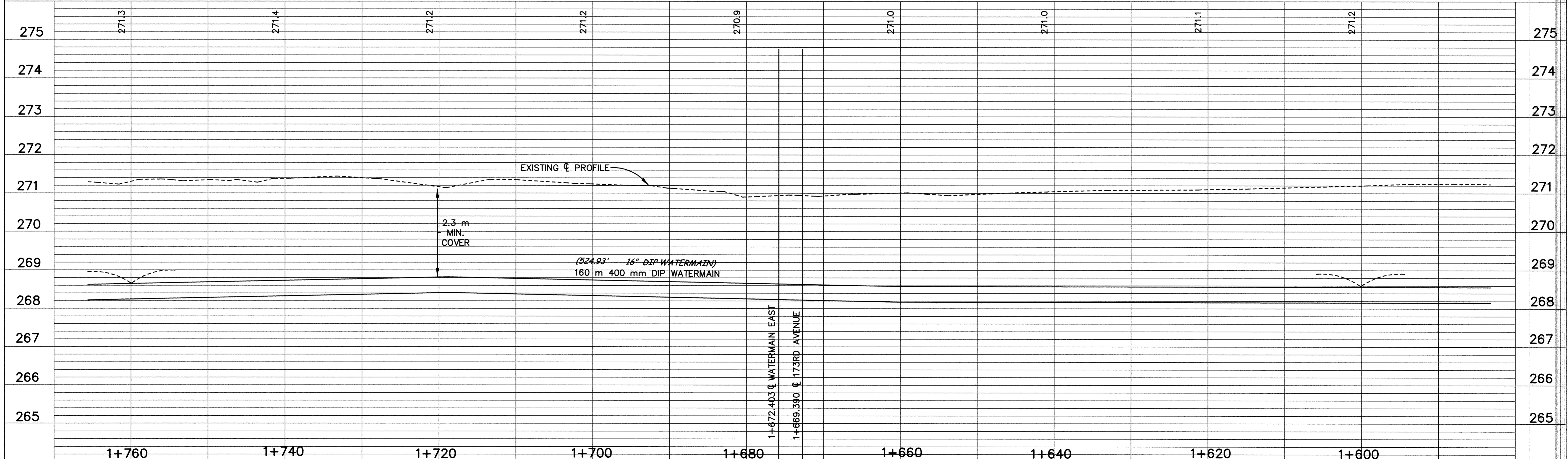


TRUNK HIGHWAY NO.10 AND NO.169

NOTE:
CONTRACTOR TO REMOVE AND REPLACE EXISTING BITUMINOUS AS DIRECTED BY THE ENGINEER.



minnesota
METRIC



DESIGNED BY: --- DRAWN BY: EY
 APPROVED: --- JOB NUMBER 800110J
 CAD DATE: March 29, 2001 3:34:42 p.m.
 CAD FILE: 800110\AS-BUILTS\AS_HWY169\AS_HWY_10.DWG

I HEREBY CERTIFY THAT THIS PLAN, SPECIFICATION, OR REPORT WAS PREPARED BY ME OR UNDER MY DIRECT SUPERVISION AND THAT I AM A DULY REGISTERED PROFESSIONAL ENGINEER UNDER THE LAWS OF THE STATE OF MINNESOTA.
 DATE 10/15/98 REG. NO. 15316

NO.	DATE	BY	REVISION DESCRIPTION

1326 ENERGY PARK DRIVE
 ST. PAUL, MINNESOTA 55108
 (612) 644-4389

 Howard R. Green Company
 CONSULTING ENGINEERS

CITY OF ELK RIVER
 EASTERN AREA
 PHASE I IMPROVEMENTS

TRUNK WATERMAIN IMPROVEMENTS
 TRUNK HIGHWAY NO.10 AND NO.169
 1+600 TO 1+760

SHEET NO.
C4-12

SD&C PRODUCTS • NEW HARBUR, MINNESOTA
 REVISIONS BY PART NUMBER 8832
 EASTERLY ROW TRUNK HIGHWAY NO.10 AND NO.169
 SHEET NO. C4-12
 EASTE 1.98