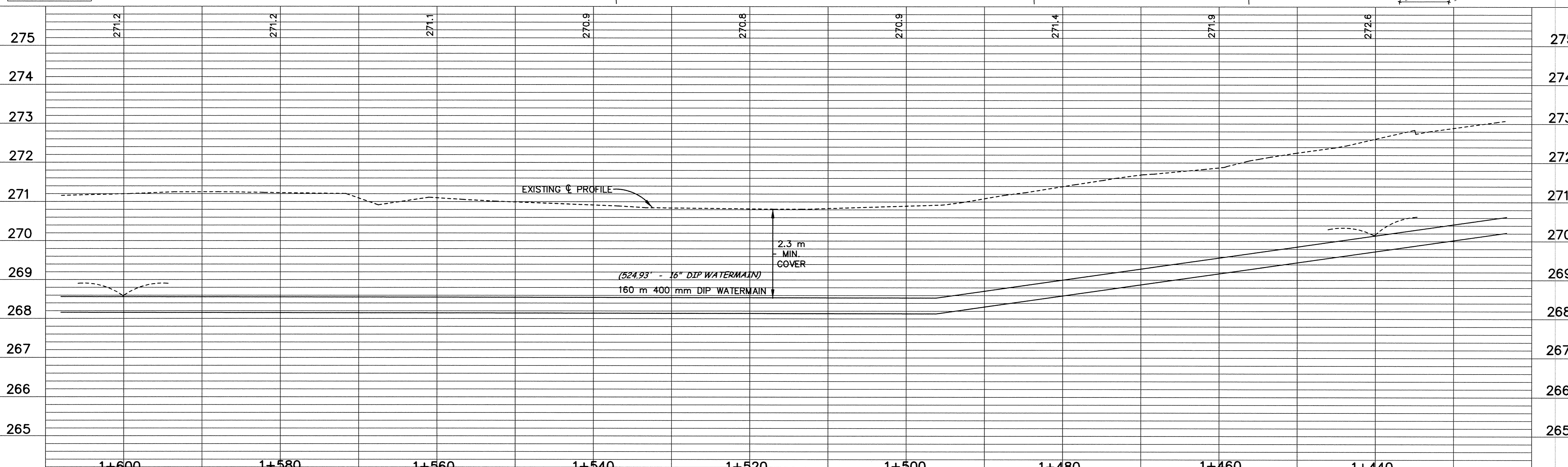
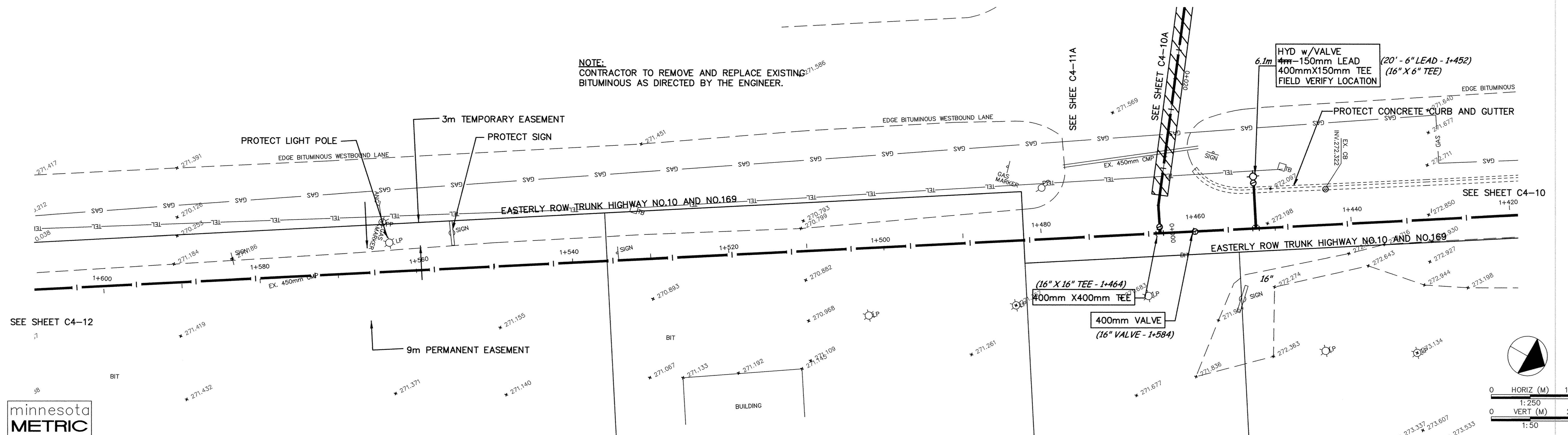


TRUNK HIGHWAY NO.10 AND NO.169

NOTE:
CONTRACTOR TO REMOVE AND REPLACE EXISTING BITUMINOUS AS DIRECTED BY THE ENGINEER.



DESIGNED BY: --- DRAWN BY: EY
 APPROVED: --- JOB NUMBER 800110J
 CAD DATE: March 30, 2001 7:59:41 a.m.
 CAD FILE: 800110J\AS-BUILTS\AS_HWY169\AS_HWY169.dwg

I HEREBY CERTIFY THAT THIS PLAN, SPECIFICATION, OR REPORT WAS PREPARED BY ME OR UNDER MY DIRECT SUPERVISION AND THAT I AM A DULY REGISTERED PROFESSIONAL ENGINEER UNDER THE LAWS OF THE STATE OF MINNESOTA.

NO.	DATE	BY	REVISION DESCRIPTION

Howard R. Green Company
 CONSULTING ENGINEERS
 1326 ENERGY PARK DRIVE
 ST. PAUL, MINNESOTA 55108
 (612) 644-4389

CITY OF ELK RIVER
 EASTERN AREA
 PHASE I IMPROVEMENTS

TRUNK WATERMAIN IMPROVEMENTS
 TRUNK HIGHWAY NO.10 AND NO.169
 1+440 TO 1+600

SHEET NO.
C4-11