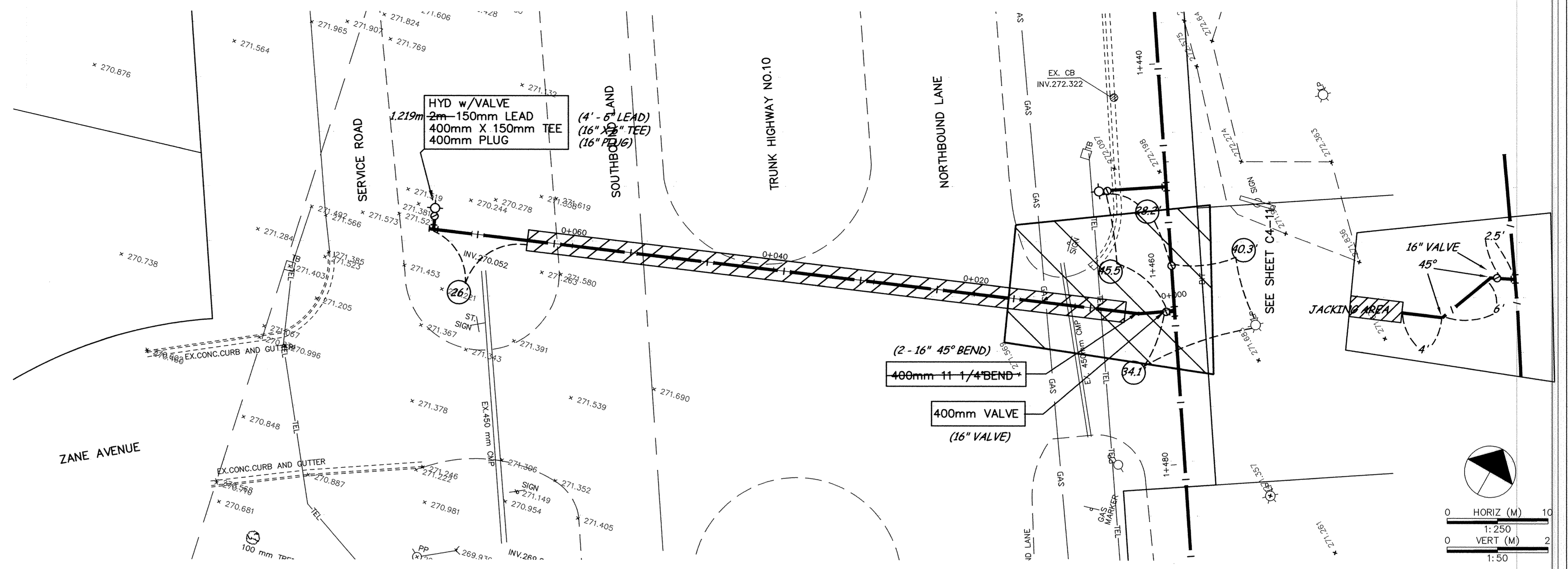
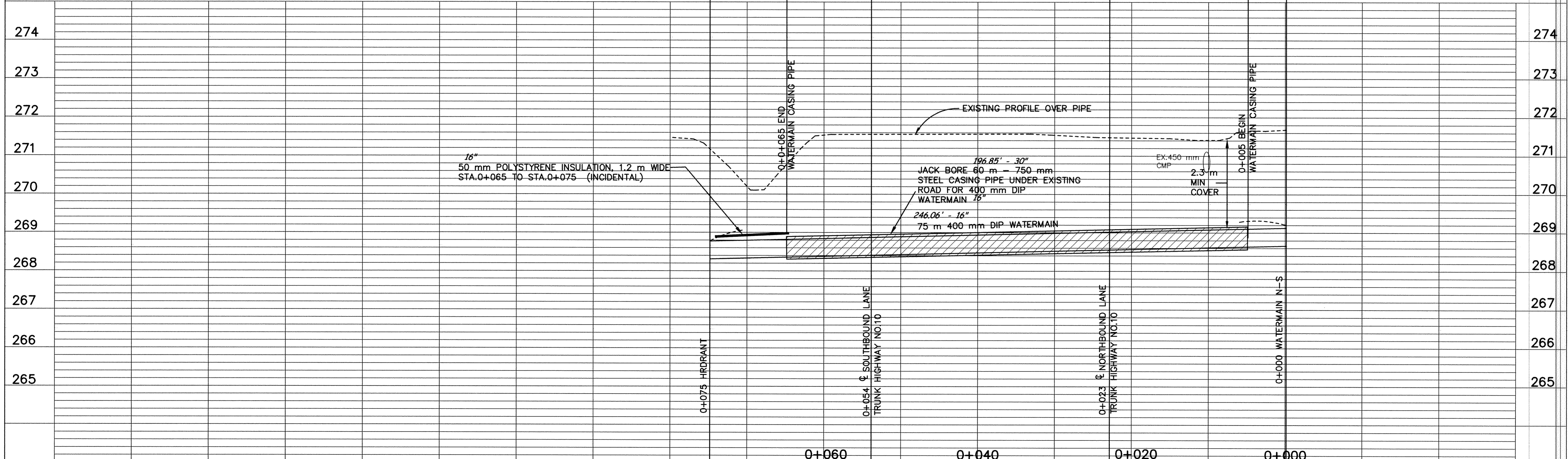
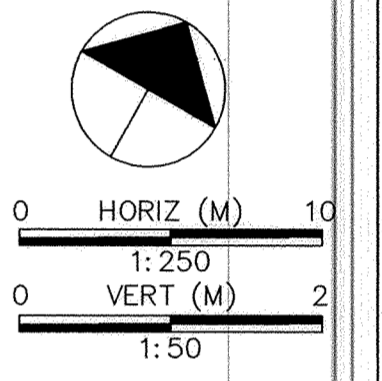


ZANE AVENUE CROSSING



minnesota
METRIC



DESIGNED BY: --- DRAWN BY: EY
 APPROVED: --- JOB NUMBER 800110J
 CAD DATE: March 29, 2001 11:13:57 a.m.
 CAD FILE: 800110\AS-BUILTS\AS_HWY169\AS_HWY169.DWG 10/15/98 REG. NO. 15316

I HEREBY CERTIFY THAT THIS PLAN, SPECIFICATION, OR REPORT WAS PREPARED BY ME OR UNDER MY DIRECT SUPERVISION AND THAT I AM A DULY REGISTERED PROFESSIONAL ENGINEER UNDER THE LAWS OF THE STATE OF MINNESOTA.

NO.	DATE	BY	REVISION DESCRIPTION

1326 ENERGY PARK DRIVE
 ST. PAUL, MINNESOTA 55108
 (612) 644-4389
Howard R. Green Company
 CONSULTING ENGINEERS

CITY OF ELK RIVER
 EASTERN AREA
 PHASE I IMPROVEMENTS

TRUNK WATERMAIN IMPROVEMENTS
 ZANE AVENUE CROSSING
 0+000 TO 0+065

SHEET NO.
C4-10A

SARGO PRODUCTS • NEW HARBOR, MINNESOTA
 PRODUCED BY PART NUMBER 8532
 EAST 1.98