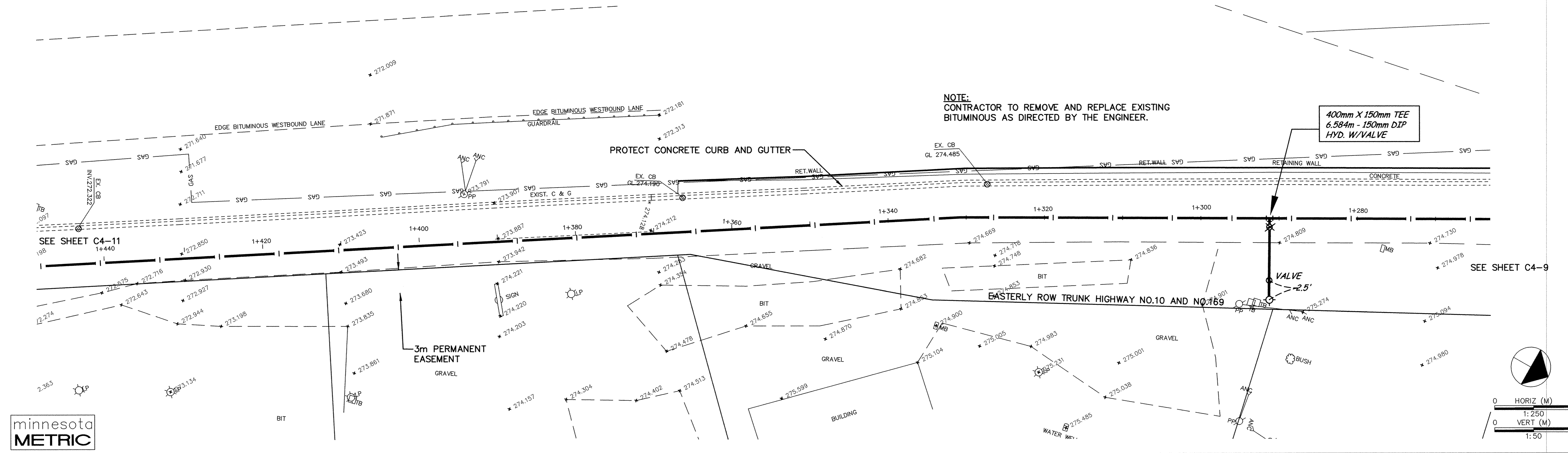


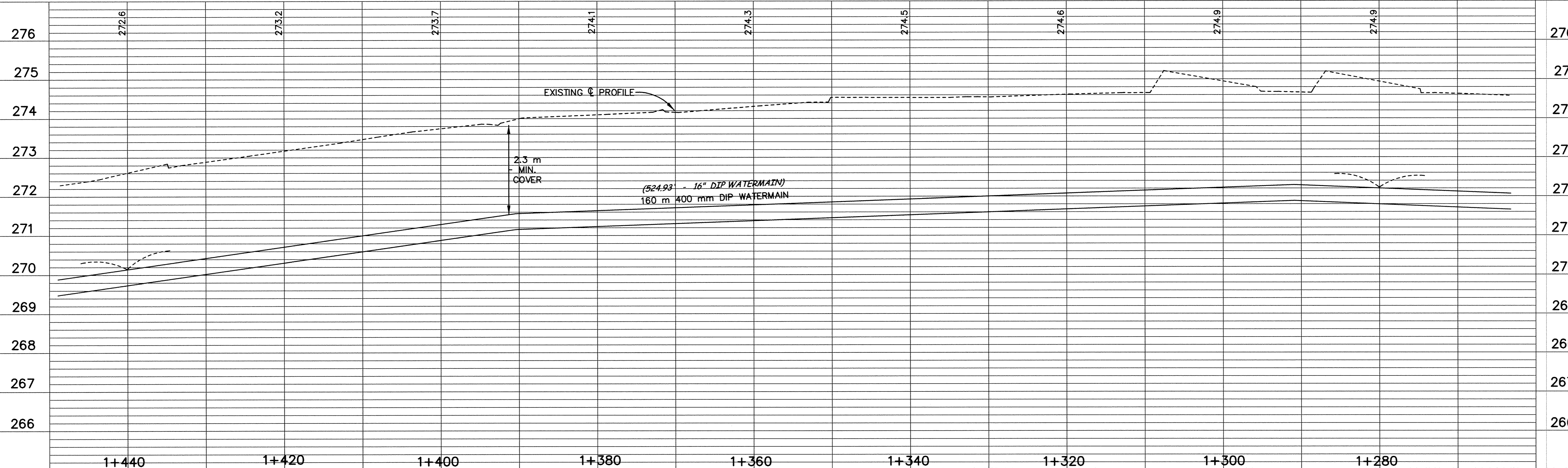
TRUNK HIGHWAY NO.10 AND NO.169 ROW



NOTE:
CONTRACTOR TO REMOVE AND REPLACE EXISTING BITUMINOUS AS DIRECTED BY THE ENGINEER.

**400mm X 150mm TEE
6.584m - 150mm DIP
HYD. W/VALVE**

minnesota
METRIC



DESIGNED BY: --- DRAWN BY: EY
APPROVED: --- JOB NUMBER 800110J
CAD DATE: March 30, 2001 8:18:50 a.m.
CAD FILE: 800110\AS-BUILTS\AS_HWY169\AS_HWY_1010.DWG

I HEREBY CERTIFY THAT THIS PLAN, SPECIFICATION, OR REPORT WAS PREPARED BY ME OR UNDER MY DIRECT SUPERVISION AND THAT I AM A DULY REGISTERED PROFESSIONAL ENGINEER UNDER THE LAWS OF THE STATE OF MINNESOTA.
DATE 10/15/98 REG. NO. 15316

NO.	DATE	BY	REVISION DESCRIPTION

1326 ENERGY PARK DRIVE
ST. PAUL, MINNESOTA 55108
(612) 644-4389
Howard R. Green Company
CONSULTING ENGINEERS

**CITY OF ELK RIVER
EASTERN AREA
PHASE I IMPROVEMENTS**

**TRUNK WATERMAIN IMPROVEMENTS
TRUNK HIGHWAY NO.10 AND NO.169**
1+280 TO 1+440

SHEET NO.
C4-10

SACD PRODUCTS • NEW HIRE, MINNESOTA
 REVISION BY PART NUMBER 8582
 EASTERLY ROW TRUNK HIGHWAY NO.10 AND NO.169 ROW

EASTERLY 198