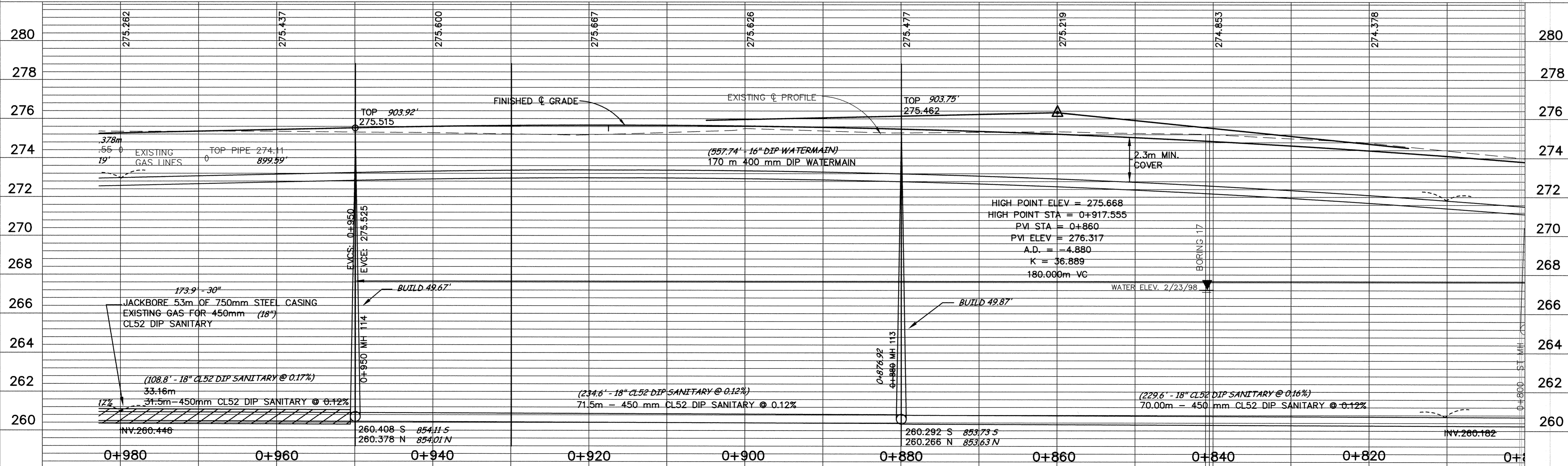
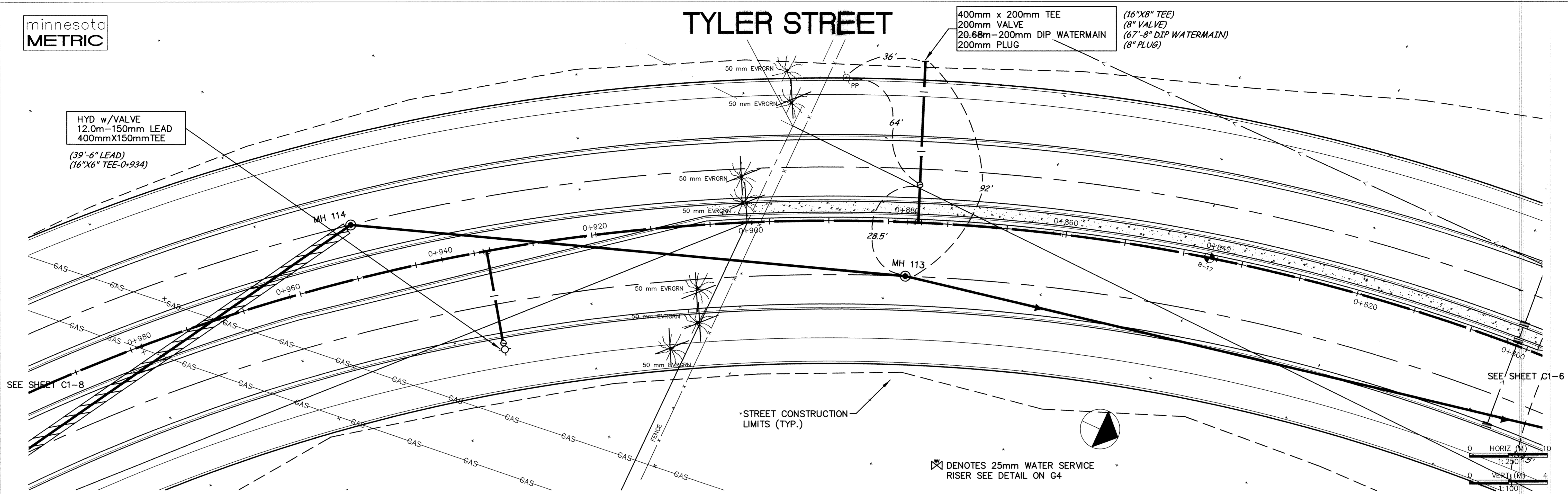


TYLER STREET

400mm x 200mm TEE
200mm VALVE
20.68m-200mm DIP WATERMAIN
200mm PLUG

(16"X8" TEE)
(8" VALVE)
(67'-8" DIP WATERMAIN)
(8" PLUG)

HYD w/VALVE
12.0m-150mm LEAD
400mmX150mm TEE
(39'-6" LEAD)
(16"X6" TEE-0.934)



DESIGNED BY: AB JOB DATE: MARCH 1998
DRAWN BY: JOB NUMBER: 800110J
APPROVED: CAD DATE:
CAD FILE: February 15, 1999 9:40:24 a.m.
800110J\Draws\Tyler_BASE.06.DWG

I HEREBY CERTIFY THAT THIS PLAN, SPECIFICATION,
OR REPORT WAS PREPARED BY ME OR UNDER MY DIRECT
SUPERVISION AND THAT I AM A DULY REGISTERED
PROFESSIONAL ENGINEER UNDER THE LAWS OF THE
STATE OF MINNESOTA.
DATE: 10/15/98 REG. NO.: 15316

NO.	DATE	BY	REVISION DESCRIPTION
1	2-15-99	LK	ADD WATERMAIN STUB LEADING TO ELK RIVER BUSINESS PARK

1326 ENERGY PARK DRIVE
ST. PAUL, MINNESOTA 55108
(612) 644-4389

Howard R. Green Company
CONSULTING ENGINEERS

CITY OF ELK RIVER
EASTERN AREA
PHASE I IMPROVEMENTS

STREET AND UTILITY IMPROVEMENTS
TYLER STREET
0+810 TO 0+980

SHEET NO.
C1-7