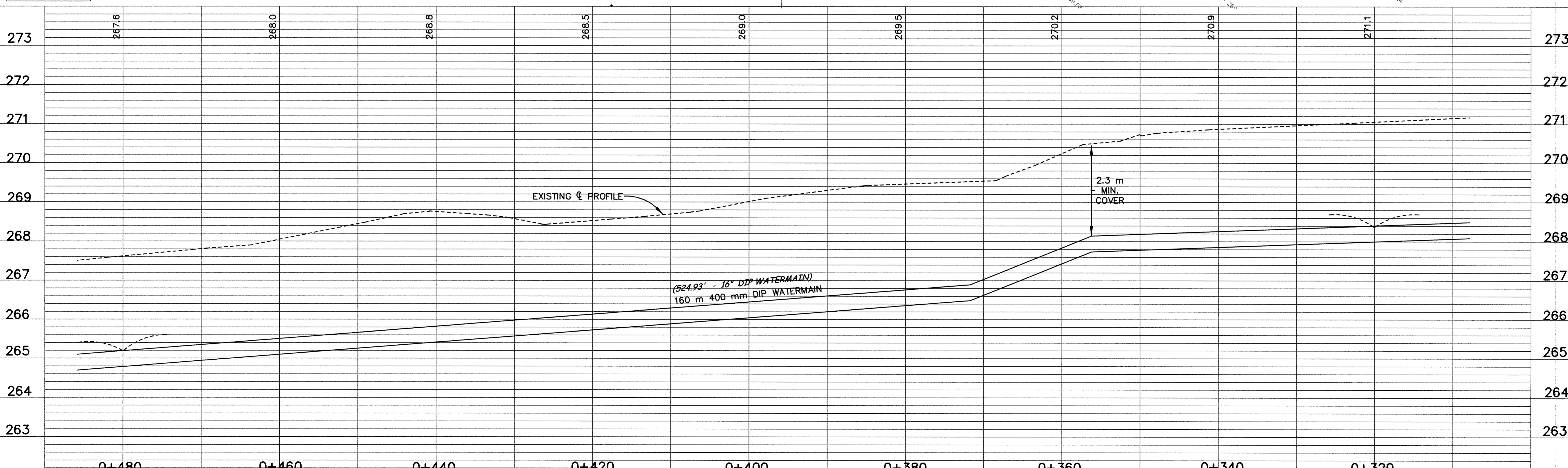
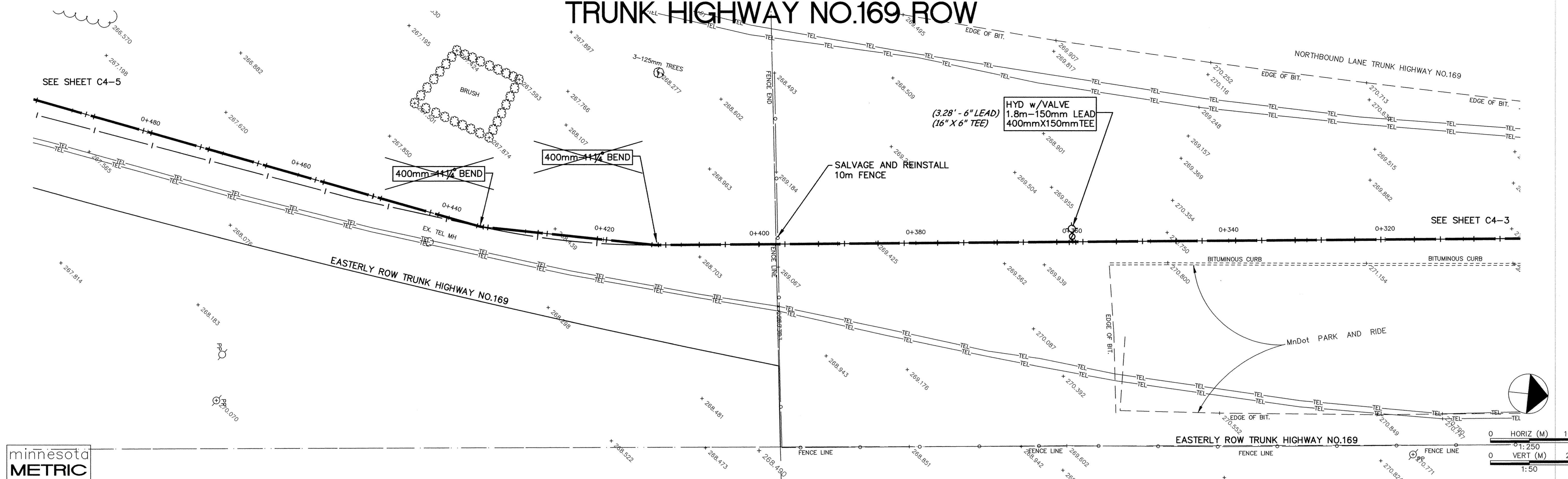


TRUNK HIGHWAY NO.169 ROW



DESIGNED BY: --- DRAWN BY: EY
 APPROVED: --- JOB NUMBER 800110J
 CAD DATE: October 14, 1998 10:29:08 a.m.
 CAD FILE: 800110j\Draws\HWY_10\HWY_1003.DWG

I HEREBY CERTIFY THAT THIS PLAN, SPECIFICATION, OR REPORT WAS PREPARED BY ME OR UNDER MY DIRECT SUPERVISION AND THAT I AM A DULY REGISTERED PROFESSIONAL ENGINEER UNDER THE LAWS OF THE STATE OF MINNESOTA.
 DATE 10/15/98 REG. NO. 15316

NO.	DATE	BY	REVISION DESCRIPTION



1326 ENERGY PARK DRIVE
 ST. PAUL, MINNESOTA 55108
 (612) 644-4389
Howard R. Green Company
 CONSULTING ENGINEERS

CITY OF ELK RIVER
 EASTERN AREA
 PHASE I IMPROVEMENTS

TRUNK WATERMAIN IMPROVEMENTS
 TRUNK HIGHWAY NO.169 ROW
 0+320 TO 0+480

SHEET NO.
C4-4

DRAWING NUMBER EAST198
 124
 SAECO PRODUCTS • NEW HOPE, MINNESOTA
 REVISION BY PART NUMBER 8552
 21 PRODUCTS • NEW HOPE, MINNESOTA
 REVISION BY PART NUMBER 8552