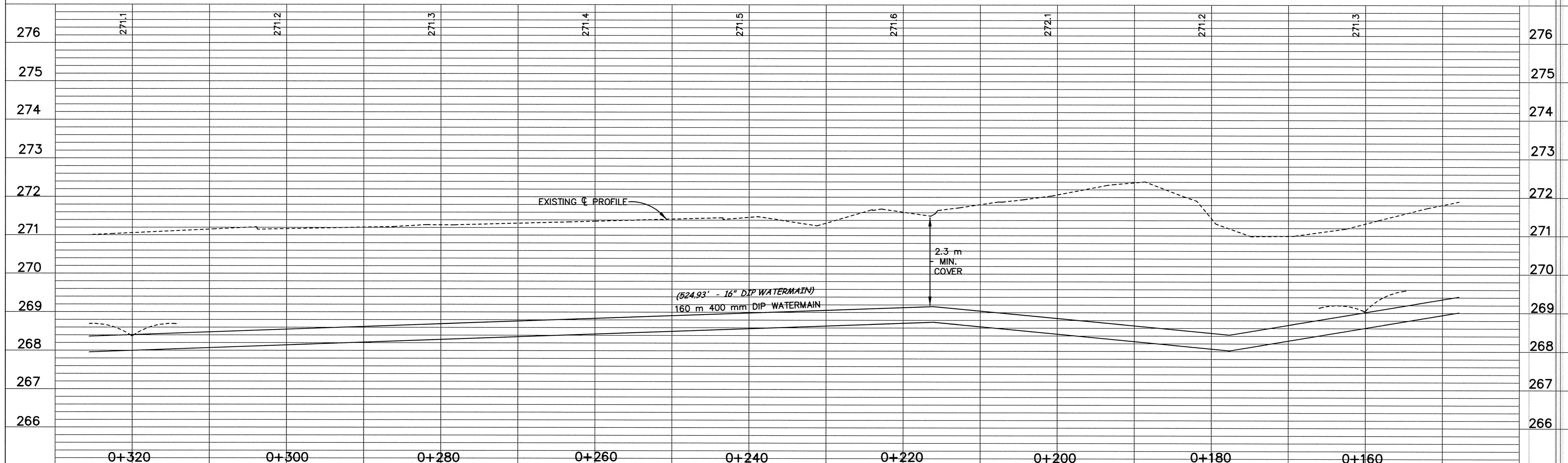
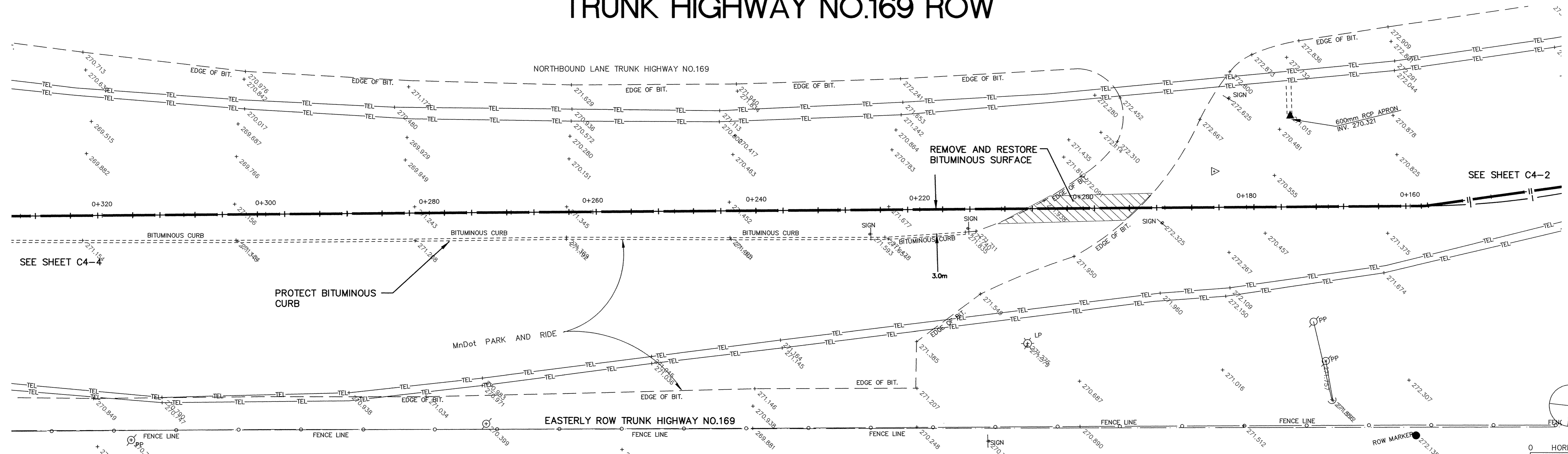


# TRUNK HIGHWAY NO.169 ROW



DESIGNED BY: --- DRAWN BY: EY  
 APPROVED: --- JOB NUMBER 800110J  
 CAD DATE: June 22, 2001 12:04:46 p.m.  
 CAD FILE: 800110j\AS-BUILTS\AS\_HWY169\_HWY10\_173RD\AS\_HWY1002.DWG

I HEREBY CERTIFY THAT THIS PLAN, SPECIFICATION, OR REPORT WAS PREPARED BY ME OR UNDER MY DIRECT SUPERVISION AND THAT I AM A DULY REGISTERED PROFESSIONAL ENGINEER UNDER THE LAWS OF THE STATE OF MINNESOTA.

DATE: 10/15/99 REG. NO. 15316

NO.	DATE	BY	REVISION DESCRIPTION

1326 ENERGY PARK DRIVE  
 ST. PAUL, MINNESOTA 55108  
 (612) 644-4389

**Howard R. Green Company**  
 CONSULTING ENGINEERS

CITY OF ELK RIVER  
 EASTERN AREA  
 PHASE I IMPROVEMENTS

TRUNK WATERMAIN IMPROVEMENTS  
 TRUNK HIGHWAY NO.169 ROW  
 0+160 TO 0+320

SHEET NO.  
**C4-3**

SDQC PRODUCTS - NEW HARBOR, MINNESOTA  
 REGISTERED PROFESSIONAL ENGINEER  
 PROJECT NO. 01-001-001-001  
 SHEET NO. C4-3 OF 11  
 DATE: 10/15/99