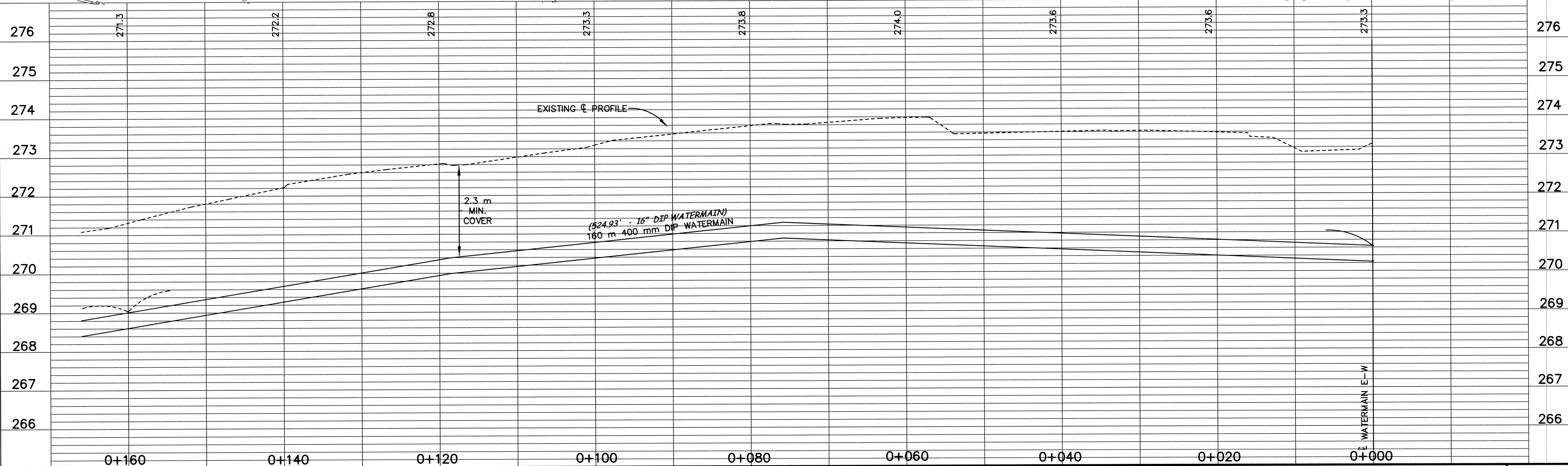
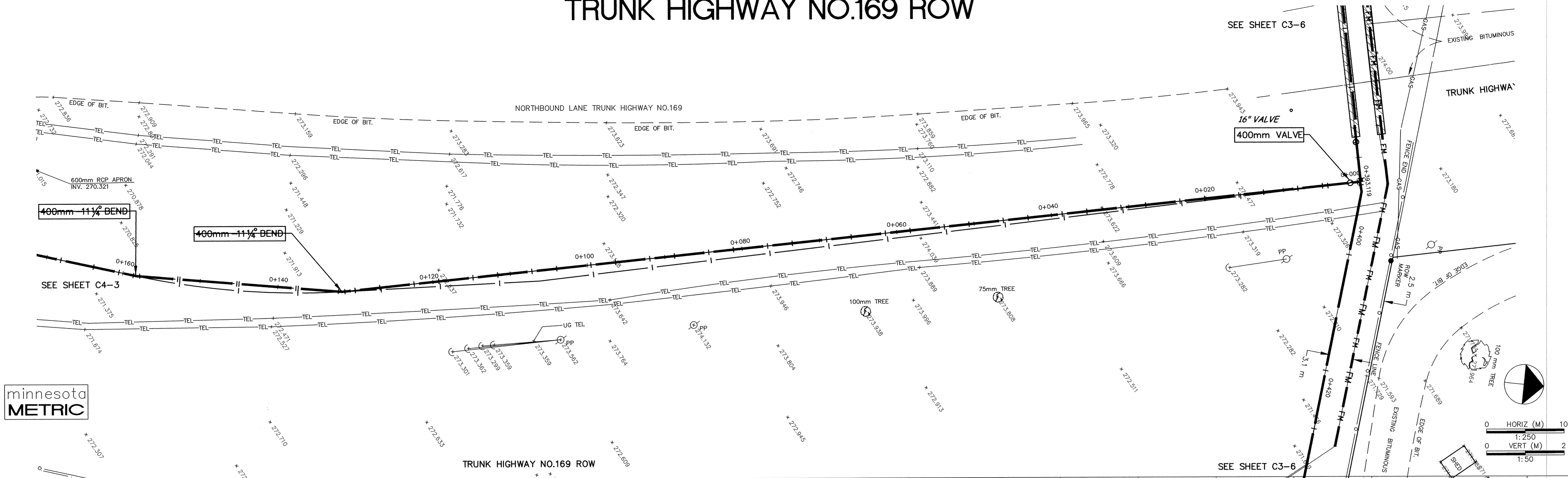


TRUNK HIGHWAY NO.169 ROW



DESIGNED BY: --- DRAWN BY: EY
 APPROVED: --- JOB NUMBER 800110J
 CAD DATE: March 30, 2001 9:36:03 a.m.
 CAD FILE: 800110J\AS-BUILTS\AS-HWY169\AS-HWY-1002.DWG

I HEREBY CERTIFY THAT THIS PLAN, SPECIFICATION, OR REPORT WAS PREPARED BY ME OR UNDER MY DIRECT SUPERVISION AND THAT I AM A DULY REGISTERED PROFESSIONAL ENGINEER UNDER THE LAWS OF THE STATE OF MINNESOTA.
 DATE 10/15/98 REG. NO. 15316

NO.	DATE	BY	REVISION DESCRIPTION

1326 ENERGY PARK DRIVE
 ST. PAUL, MINNESOTA 55108
 (612) 644-4389

Howard R. Green Company
 CONSULTING ENGINEERS

CITY OF ELK RIVER
 EASTERN AREA
 PHASE I IMPROVEMENTS

TRUNK WATERMAIN IMPROVEMENTS
 TRUNK HIGHWAY NO.169 ROW
 0+000 TO 0+160

SHEET NO.
C4-2

SD PRODUCTS • NEW HARBOR, MINNESOTA
 PREPARED BY PLAN NUMBER 8552
 EASTE1.98