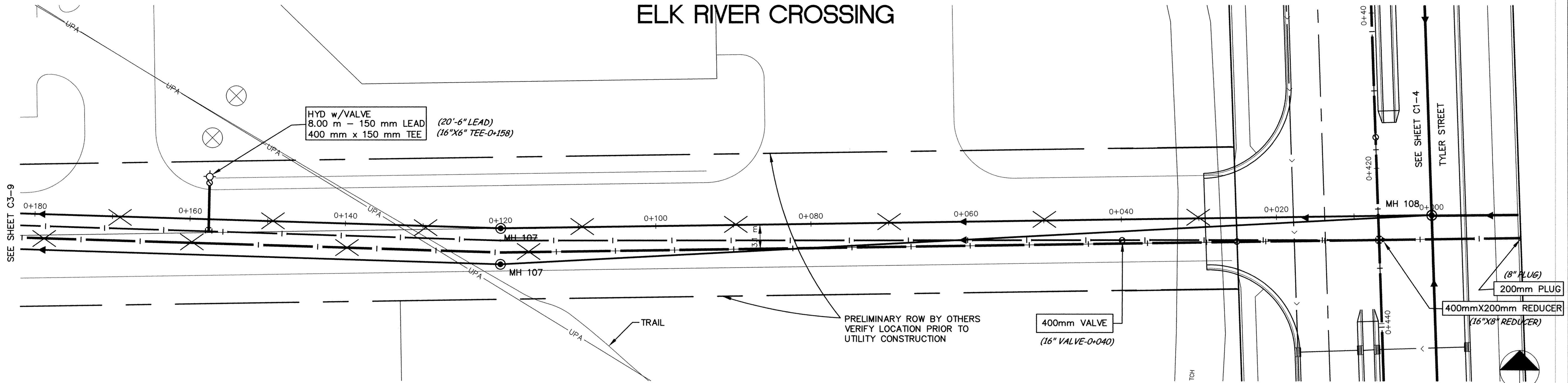
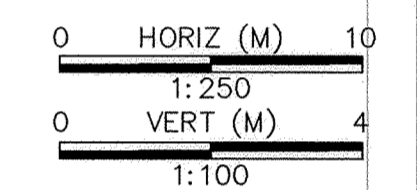


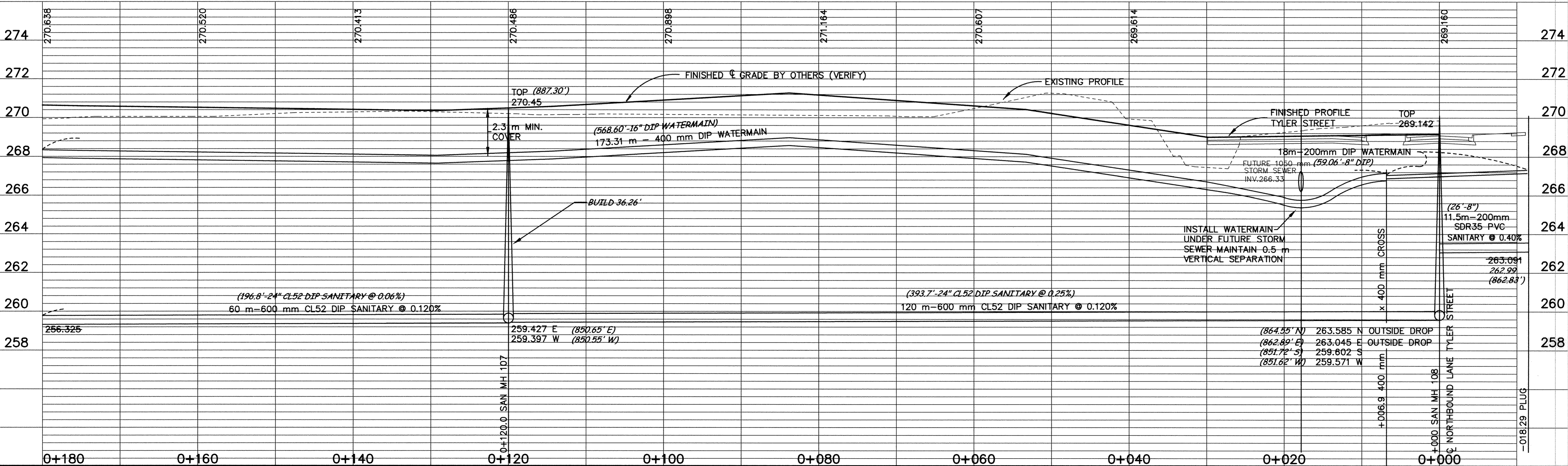
# SANITARY SEWER AND WATERMAIN ELK RIVER CROSSING



**NOTE:**  
VERIFY FINISHED CENTERLINE GRADE  
PRIOR TO CONSTRUCTION OF SANITARY  
SEWER AND WATERMAIN



minnesota  
**METRIC**



DESIGNED BY: \_\_\_\_\_ JOB DATE: JULY1998  
 DRAWN BY: RKM JOB NUMBER 800110J  
 CAD DATE: April 02, 2001 10:06:52 a.m.  
 CAD FILE: 800110\AS-BUILTS\AS\_FORCEMAIN\ASNP01.DWG

I HEREBY CERTIFY THAT THIS PLAN, SPECIFICATION,  
 OR REPORT WAS PREPARED BY ME OR UNDER MY DIRECT  
 SUPERVISION AND THAT I AM A DULY REGISTERED  
 PROFESSIONAL ENGINEER UNDER THE LAWS OF THE  
 STATE OF MINNESOTA.  
 DATE 10/15/98 REG. NO. 15316

NO.	DATE	BY	REVISION DESCRIPTION
1	1-21-99	PH	DELETED MH 108A

1326 ENERGY PARK DRIVE  
 ST. PAUL, MINNESOTA 55108  
 (612) 644-4389

**Howard R. Green Company**  
 CONSULTING ENGINEERS

**CITY OF ELK RIVER  
 EASTERN AREA  
 PHASE I IMPROVEMENTS**

**SANITARY SEWER AND  
 WATERMAIN IMPROVEMENTS**  
 0+000 TO 0+180

SHEET NO.  
**C3-10**

DRAWING NUMBER EAST1E198 120

SARGO PRODUCTS • NEW HOPE, MINNESOTA  
 REGISTERED PROFESSIONAL ENGINEER  
 PROJECT NO. 800110J