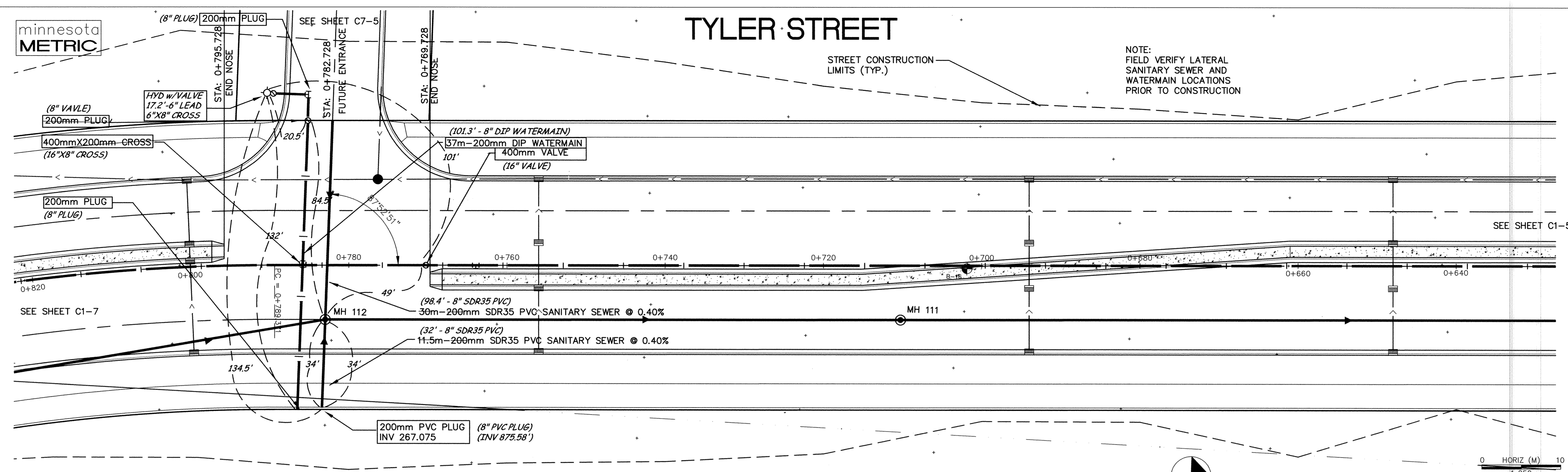


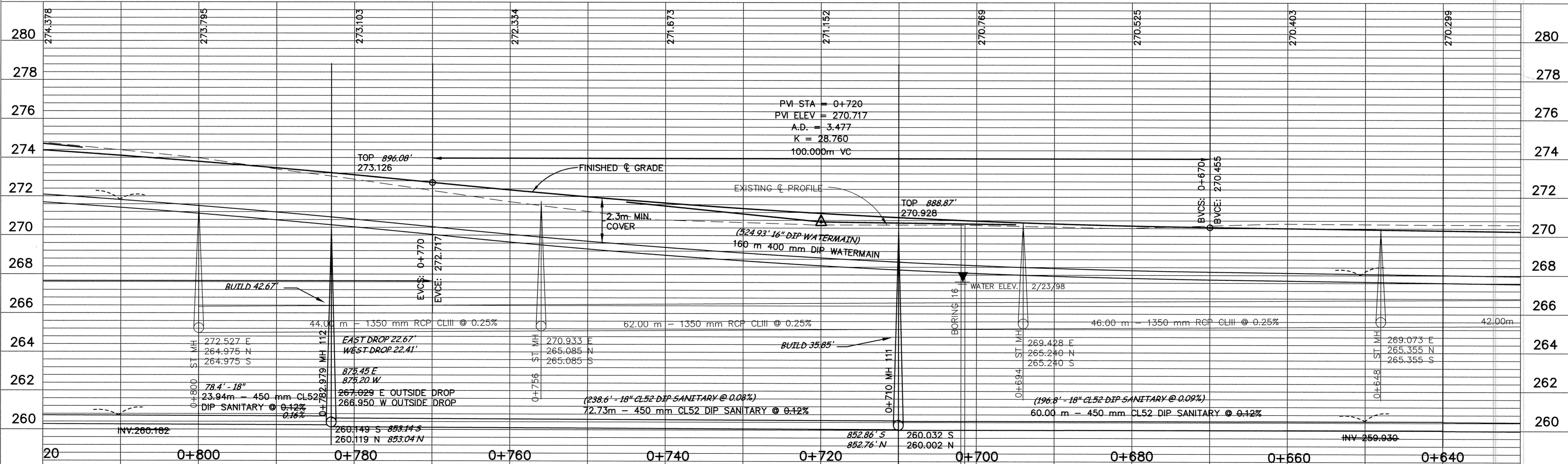
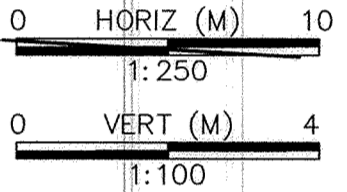
minnesota
METRIC

TYLER STREET

NOTE:
FIELD VERIFY LATERAL
SANITARY SEWER AND
WATERMAIN LOCATIONS
PRIOR TO CONSTRUCTION



⊠ DENOTES 25mm WATER SERVICE
RISER SEE DETAIL ON G4



DESIGNED BY: AB JOB DATE: MARCH 1998
 DRAWN BY: [Signature] JOB NUMBER: 800110J
 APPROVED: [Signature] CAD DATE:
 CAD FILE: March 02, 1999 11:19:58 a.m.
 800110\Drawgs\Tyler_BASE\05.DWG

I HEREBY CERTIFY THAT THIS PLAN, SPECIFICATION,
 OR REPORT WAS PREPARED BY ME OR UNDER MY DIRECT
 SUPERVISION AND THAT I AM A DULY REGISTERED
 PROFESSIONAL ENGINEER UNDER THE LAWS OF THE
 STATE OF MINNESOTA.
 DATE: _____ REG. NO.: 15316

NO.	DATE	BY	REVISION DESCRIPTION
1	11/20/98	LK	MANHOLE STATIONING
1	1-21-99	PH	REVISED INTERSECTION/DELETED HYD
1	1-21-99	PH	DELETED MH 112B
2	3-2-99	LK	REVISED THE WEST INVERT INTO SAN MH 112

1326 ENERGY PARK DRIVE
 ST. PAUL, MINNESOTA 55108
 (612) 644-4389

Howard R. Green Company
 CONSULTING ENGINEERS

CITY OF ELK RIVER
 EASTERN AREA
 PHASE I IMPROVEMENTS

STREET AND UTILITY IMPROVEMENTS
 TYLER STREET
 0+650 TO 0+810

SHEET NO.
C1-6