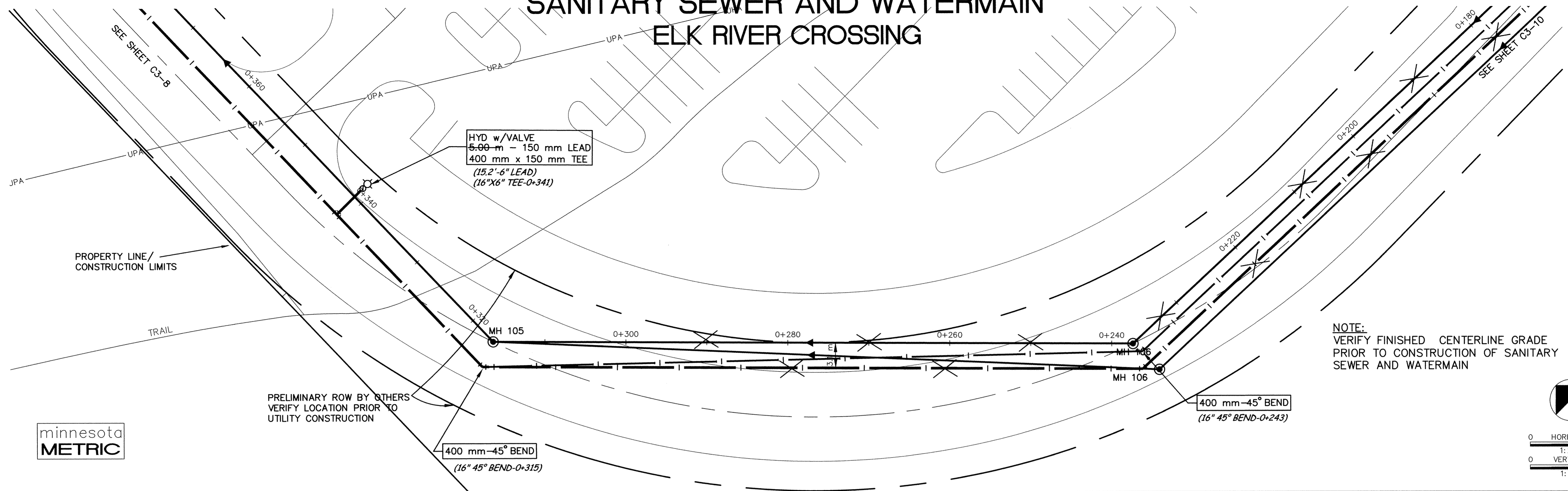
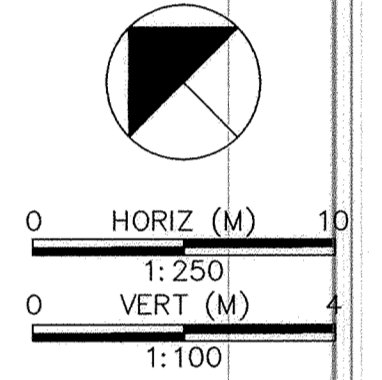


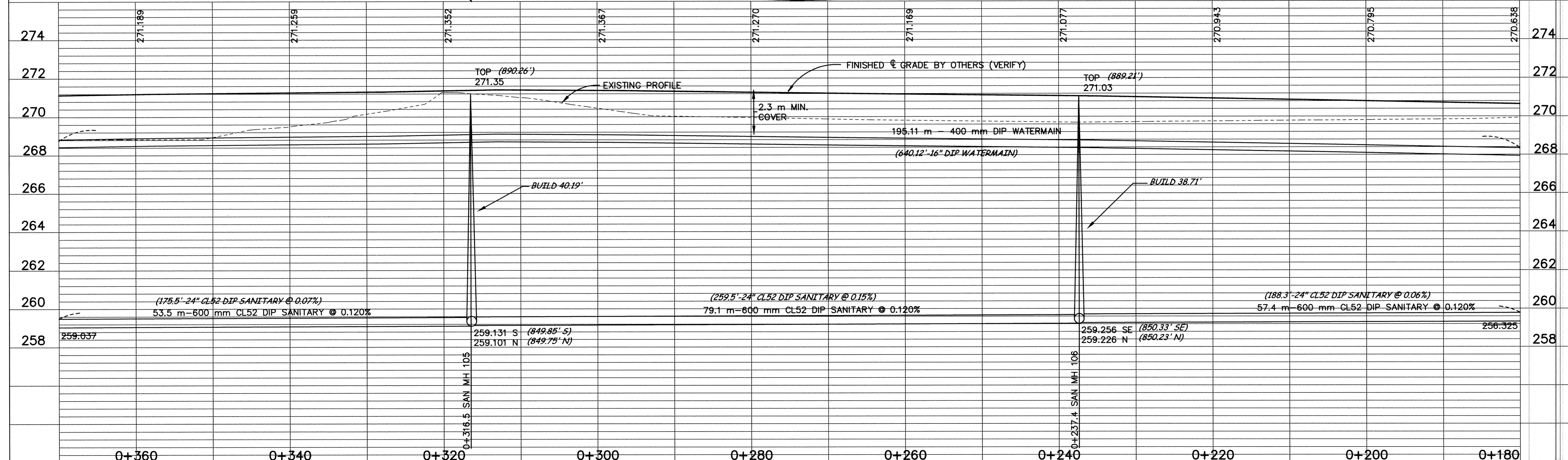
SANITARY SEWER AND WATERMAIN ELK RIVER CROSSING



NOTE:
VERIFY FINISHED CENTERLINE GRADE
PRIOR TO CONSTRUCTION OF SANITARY
SEWER AND WATERMAIN



minnesota
METRIC



DESIGNED BY: _____ JOB DATE: JULY 1998
 DRAWN BY: RKM JOB NUMBER: 800110J
 APPROVED: _____ CAD DATE: JULY 1998
 CAD FILE: April 02, 2001 9:56:53 a.m.
 800110J\AS-BUILTS\AS_FORCEMAIN\ASNP02.DWG

I HEREBY CERTIFY THAT THIS PLAN, SPECIFICATION,
 OR REPORT WAS PREPARED BY ME OR UNDER MY DIRECT
 SUPERVISION AND THAT I AM A DULY REGISTERED
 PROFESSIONAL ENGINEER UNDER THE LAWS OF THE
 STATE OF MINNESOTA.
 DATE: 10/15/98 REG. NO.: 15316

NO.	DATE	BY	REVISION DESCRIPTION

1326 ENERGY PARK DRIVE
 ST. PAUL, MINNESOTA 55108
 (612) 644-4389

Howard R. Green Company
 CONSULTING ENGINEERS

CITY OF ELK RIVER
 EASTERN AREA
 PHASE I IMPROVEMENTS

**SANITARY SEWER AND
 WATERMAIN IMPROVEMENTS**
 0+180 TO 0+370

SHEET NO.
C3-9

3D PRODUCTS - NEW HOPE, MINNESOTA
 PREPARED BY: PAUL NAMBUR ISSER
 REVISIONS: SEE LIST OF REVISIONS
 1/9