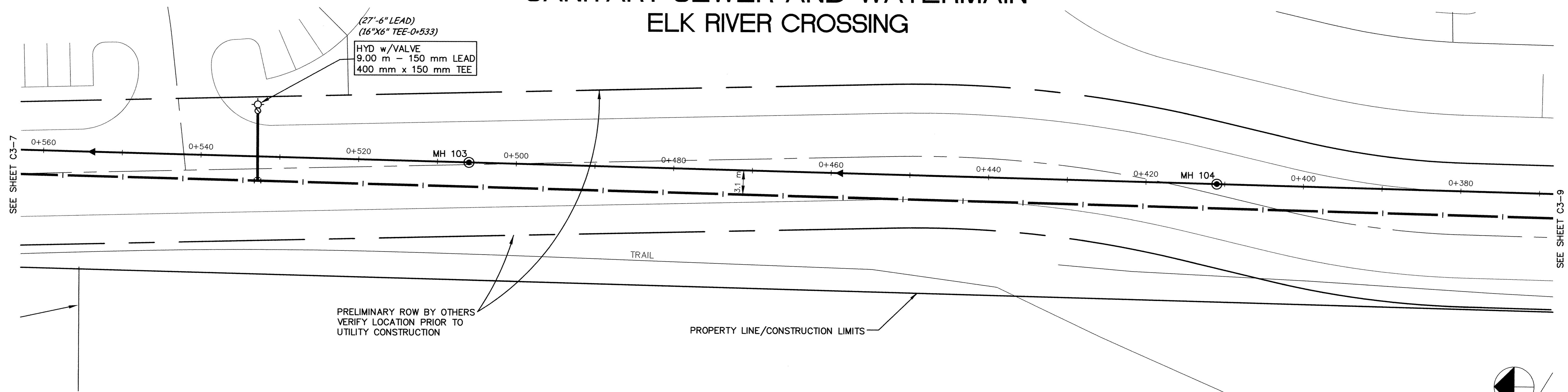
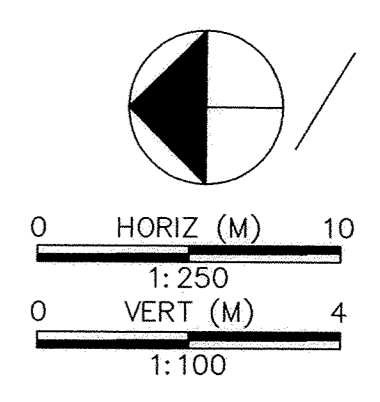


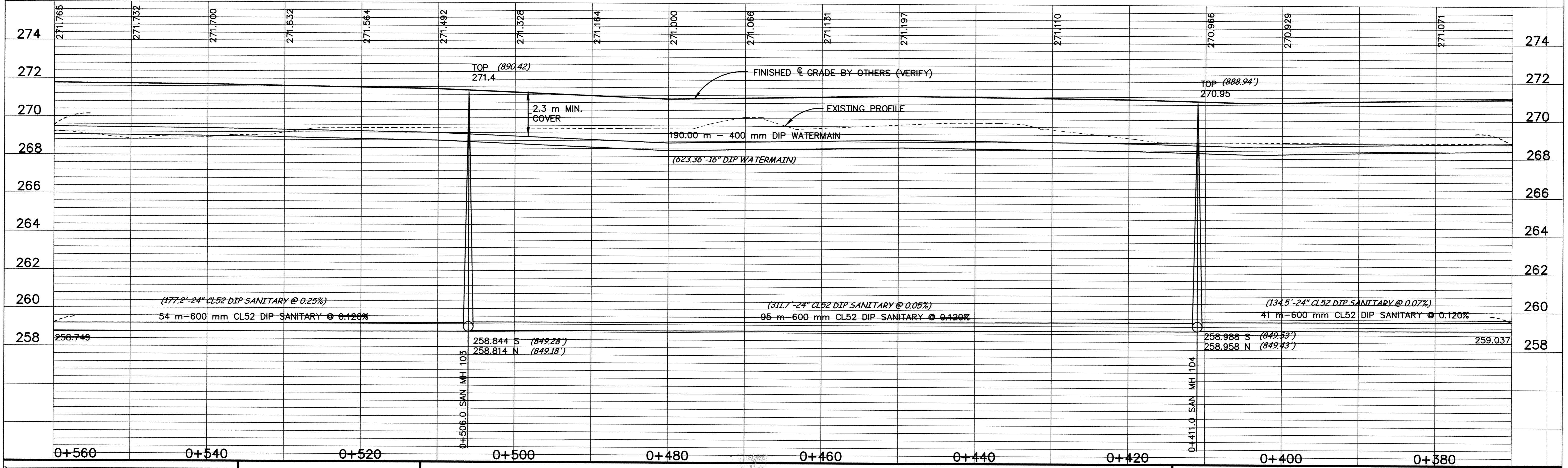
SANITARY SEWER AND WATERMAIN ELK RIVER CROSSING



NOTE:
VERIFY FINISHED CENTERLINE GRADE
PRIOR TO CONSTRUCTION OF SANITARY
SEWER AND WATERMAIN



minnesota
METRIC



DESIGNED BY: _____ JOB DATE: JULY 1998
 DRAWN BY: RKM JOB NUMBER: 800110J
 APPROVED: _____ CAD DATE: JULY 1998
 CAD FILE: October 14, 1998 8:59:22 a.m.
 800110J\Drawgs\FORCEMAIN\NP03.DWG

I HEREBY CERTIFY THAT THIS PLAN, SPECIFICATION,
 OR REPORT WAS PREPARED BY ME OR UNDER MY DIRECT
 SUPERVISION AND THAT I AM A DULY REGISTERED
 PROFESSIONAL ENGINEER UNDER THE LAWS OF THE
 STATE OF MINNESOTA.
 DATE 10/15/98 REG. NO. 15316

NO.	DATE	BY	REVISION DESCRIPTION

1326 ENERGY PARK DRIVE
ST. PAUL, MINNESOTA 55108
(612) 644-4389

Howard R. Green Company
CONSULTING ENGINEERS

**CITY OF ELK RIVER
EASTERN AREA
PHASE I IMPROVEMENTS**

**SANITARY SEWER AND
WATERMAIN IMPROVEMENTS
0+370 TO 0+560**

SHEET NO.
C3-8

DRAWING NUMBER EASTE198 1/18
 SAICO PRODUCTS • NEW HOPE, MINNESOTA
 REGISTERED BY PART NUMBER 8589
 DRAWING NUMBER 8589
 SAICO PRODUCTS • NEW HOPE, MINNESOTA
 REGISTERED BY PART NUMBER 8589
 DRAWING NUMBER 8589
 SAICO PRODUCTS • NEW HOPE, MINNESOTA
 REGISTERED BY PART NUMBER 8589
 DRAWING NUMBER 8589