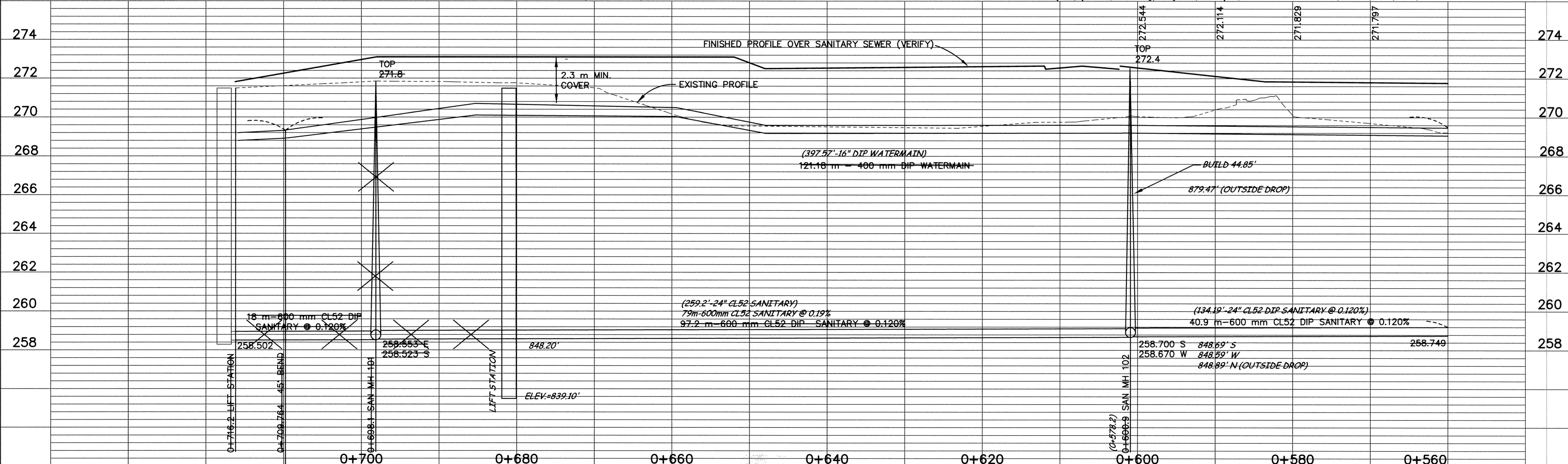
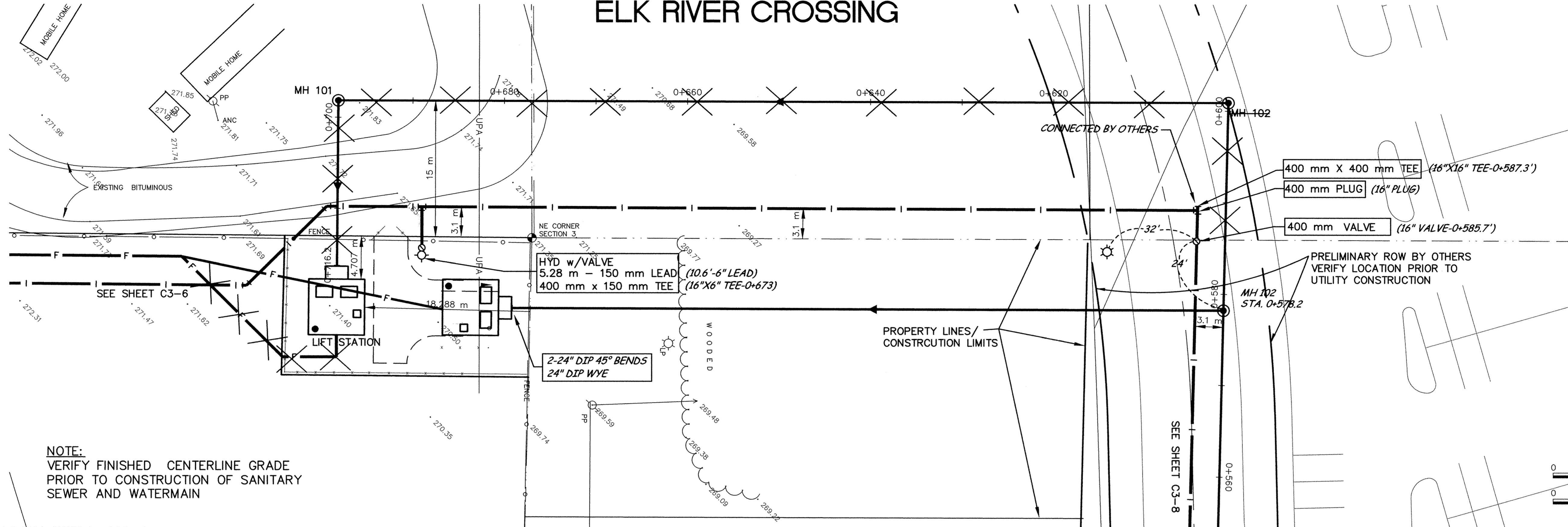


# SANITARY SEWER AND WATERMAIN ELK RIVER CROSSING



DESIGNED BY: \_\_\_\_\_ JOB DATE: JULY 1998  
DRAWN BY: RKM JOB NUMBER: 800110J  
APPROVED: \_\_\_\_\_ CAD DATE: JULY 1998  
CAD FILE: March 30, 2001 11:12:22 a.m.  
800110J\AS-BUILTS\Forcmain\ASNP04.DWG

I HEREBY CERTIFY THAT THIS PLAN, SPECIFICATION,  
OR REPORT WAS PREPARED BY ME OR UNDER MY DIRECT  
SUPERVISION AND THAT I AM A DULY REGISTERED  
PROFESSIONAL ENGINEER UNDER THE LAWS OF THE  
STATE OF MINNESOTA.

DATE 10/15/98 REG. NO. 15316

NO.	DATE	BY	REVISION DESCRIPTION

1326 ENERGY PARK DRIVE  
ST. PAUL, MINNESOTA 55108  
(612) 644-4389

**Howard R. Green Company**  
CONSULTING ENGINEERS

**CITY OF ELK RIVER  
EASTERN AREA  
PHASE I IMPROVEMENTS**

**SANITARY SEWER AND  
WATERMAIN IMPROVEMENTS**

0+560 TO 0+716.2

SHEET NO.  
**C3-7**

SD&C PRODUCTS • NEW HOPE, MINNESOTA  
 REVISION BY PART NUMBER 6532  
 117 EAST 198