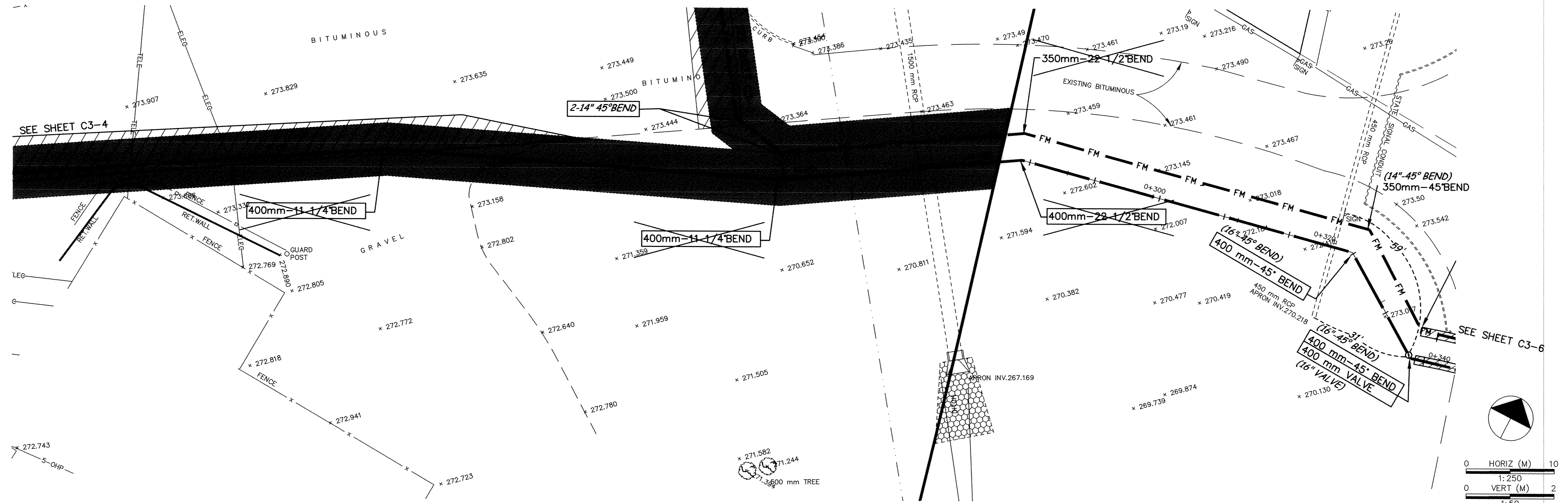
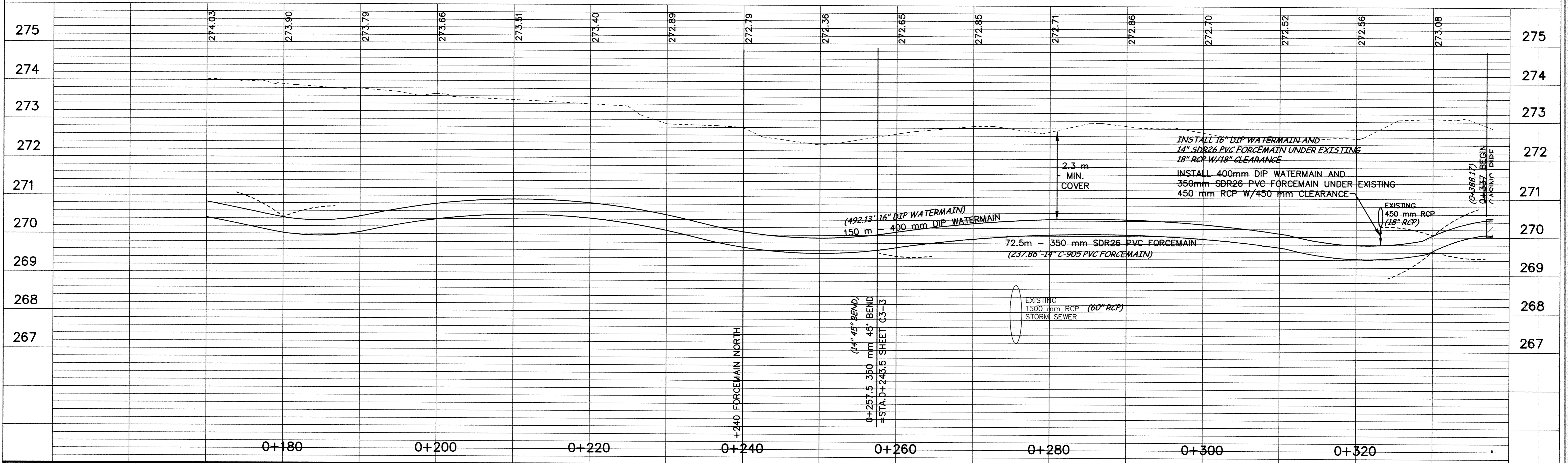


FORCEMAIN AND WATERMAIN



minnesota
METRIC



DESIGNED BY: _____ JOB DATE: MARCH 1998
 DRAWN BY: *mgj* JOB NUMBER 800110J
 APPROVED: _____ CAD DATE: MARCH 1998
 CAD FILE: March 29, 2001 3:11:17 p.m.
 800110\AS-BUILTS\Forcemain\ASF04.DWG

I HEREBY CERTIFY THAT THIS PLAN, SPECIFICATION, OR REPORT WAS PREPARED BY ME OR UNDER MY DIRECT SUPERVISION AND THAT I AM A DULY REGISTERED PROFESSIONAL ENGINEER UNDER THE LAWS OF THE STATE OF MINNESOTA.
 DATE 10/15/98 REC. NO. 15316

NO.	DATE	BY	REVISION DESCRIPTION

Howard R. Green Company
 CONSULTING ENGINEERS
 1326 ENERGY PARK DRIVE
 ST. PAUL, MINNESOTA 55108
 (612) 644-4389

CITY OF ELK RIVER
 EASTERN AREA
 PHASE I IMPROVEMENTS

FORCEMAIN AND WATERMAIN IMPROVEMENTS
 0+180 TO 0+330

SHEET NO.
C3-5

DRAWING NUMBER EASTE1-98 115
 SAFCO PRODUCTS • NEW HOPE, MINNESOTA
 DRAWING NUMBER 8852
 SAFCO PRODUCTS • NEW HOPE, MINNESOTA
 DRAWING NUMBER 8852
 SAFCO PRODUCTS • NEW HOPE, MINNESOTA
 DRAWING NUMBER 8852