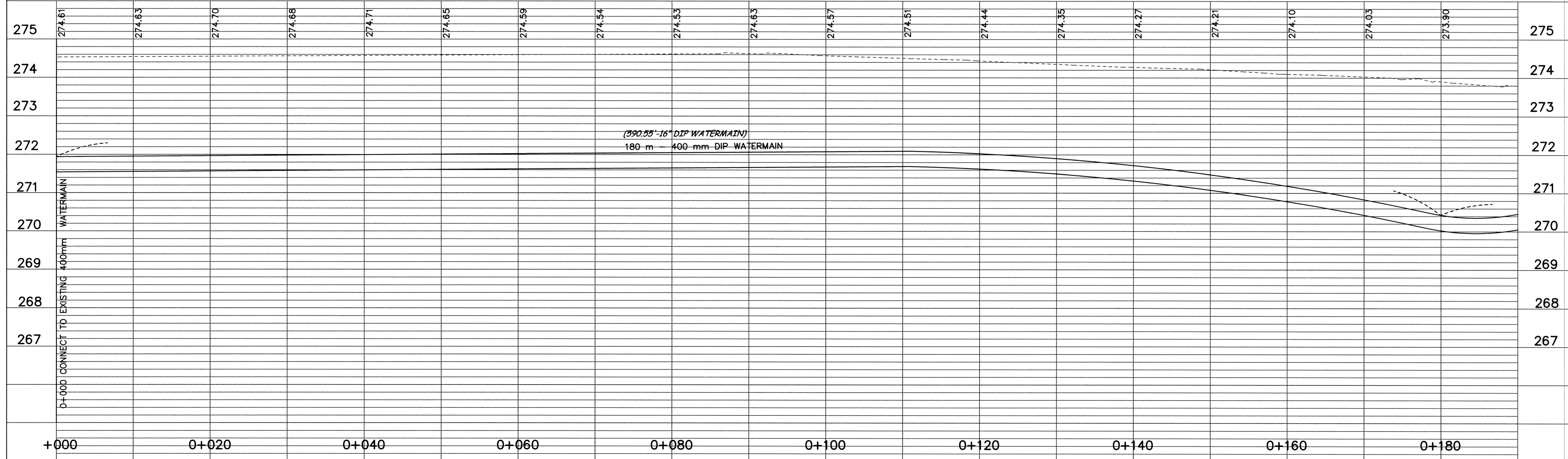
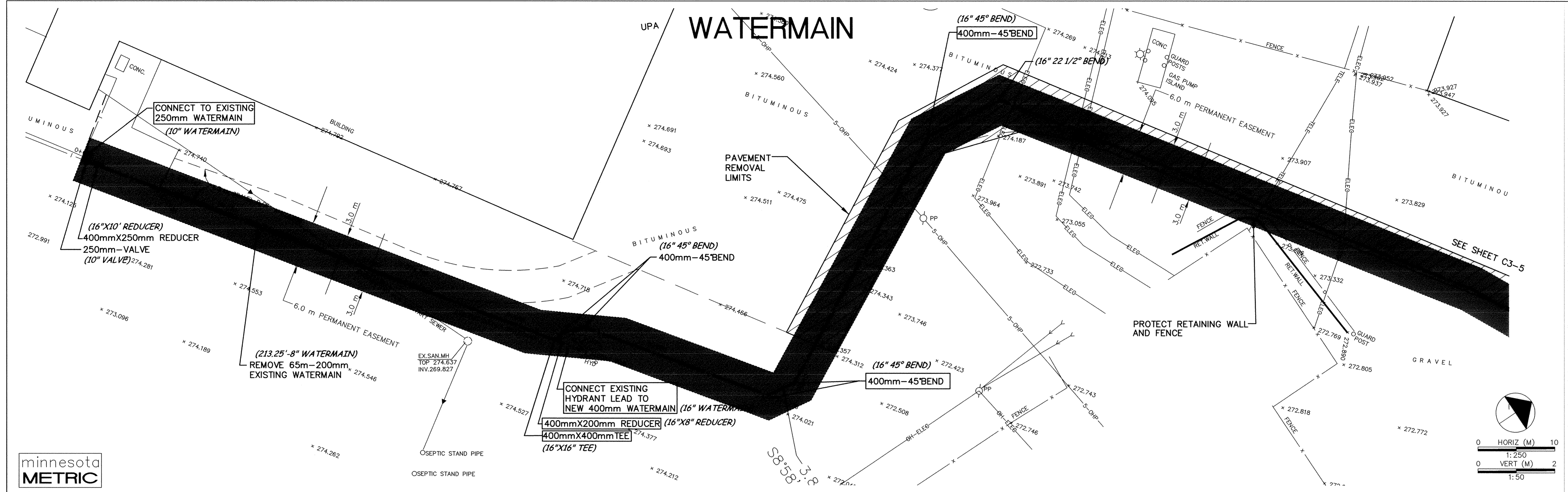


# WATERMAIN



DESIGNED BY: \_\_\_\_\_ JOB DATE: MARCH 1998  
 DRAWN BY: *mfj* JOB NUMBER: 800110J  
 APPROVED: \_\_\_\_\_ CAD DATE: MARCH 1998  
 CAD FILE: March 29, 2001 2:53:21 p.m.  
 800110\AS-BUILTS\Forcemain\ASF05.DWG

I HEREBY CERTIFY THAT THIS PLAN, SPECIFICATION, OR REPORT WAS PREPARED BY ME OR UNDER MY DIRECT SUPERVISION AND THAT I AM A DULY REGISTERED PROFESSIONAL ENGINEER UNDER THE LAWS OF THE STATE OF MINNESOTA.  
 DATE: 10/15/98 REG. NO.: 15316

NO.	DATE	BY	REVISION DESCRIPTION

1326 ENERGY PARK DRIVE  
 ST. PAUL, MINNESOTA 55108  
 (612) 644-4389

**Howard R. Green Company**  
 CONSULTING ENGINEERS

**CITY OF ELK RIVER**  
 EASTERN AREA  
 PHASE I IMPROVEMENTS

**WATERMAIN IMPROVEMENTS**  
 0+000 TO 0+180

SHEET NO.  
**C3-4**

