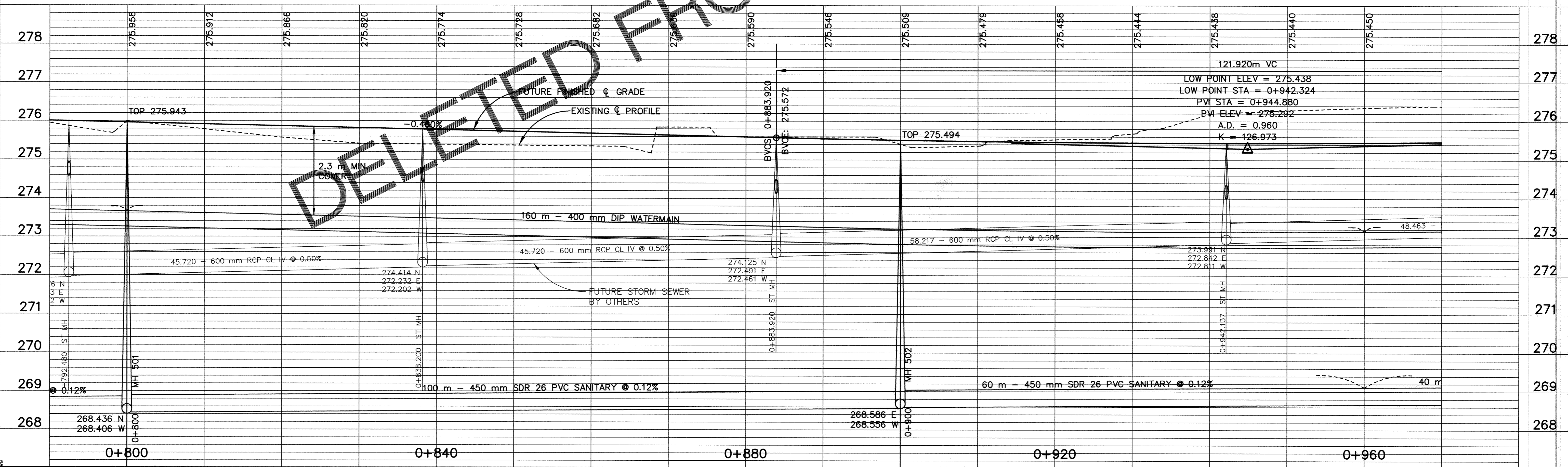
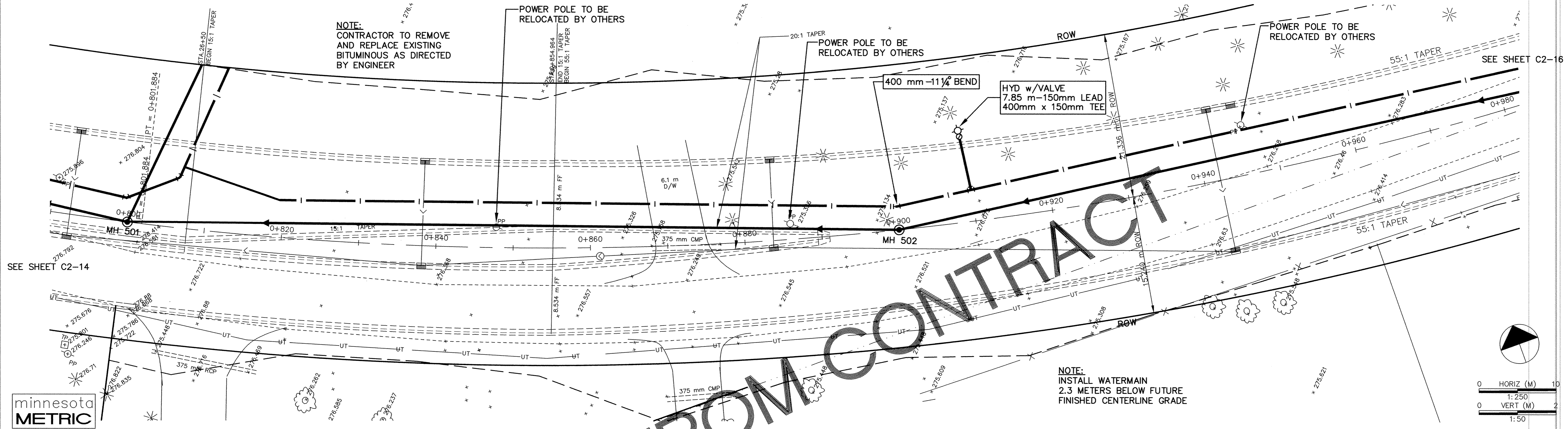


C.S.A.H. NO.12



DESIGNED BY: _____ JOB DATE: JULY 1998
 DRAWN BY: *ajg* JOB NUMBER: 800110J
 APPROVED: _____ CAD DATE: JULY 1998
 CAD FILE: February 08, 1999 1:48:21 p.m.
 800110j\dwg\BALDWIN\14.DWG

I HEREBY CERTIFY THAT THIS PLAN, SPECIFICATION, OR REPORT WAS PREPARED BY ME OR UNDER MY DIRECT SUPERVISION AND THAT I AM A DULY REGISTERED PROFESSIONAL ENGINEER UNDER THE LAWS OF THE STATE OF MINNESOTA.
 DATE: _____ REG. NO.: 15316

NO.	DATE	BY	REVISION DESCRIPTION
1	1-19-99	PH	C.O. NO. 1

Howard R. Green Company
 CONSULTING ENGINEERS
 1326 ENERGY PARK DRIVE
 ST. PAUL, MINNESOTA 55108
 (612) 644-4389

CITY OF ELK RIVER
 EASTERN AREA
 PHASE I IMPROVEMENTS

WATERMAIN IMPROVEMENTS
 C.S.A.H. NO.12
 0+800 TO 0+960

SHEET NO.
C2-15
 EAST 138

DELETED FROM CONTRACT