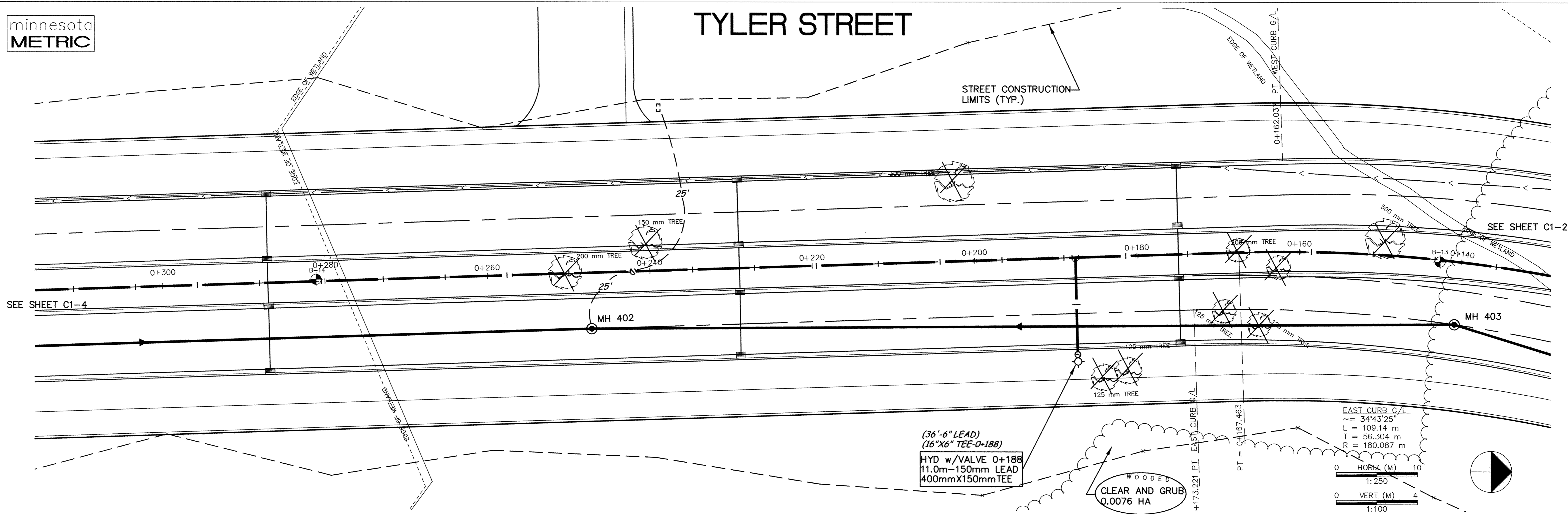
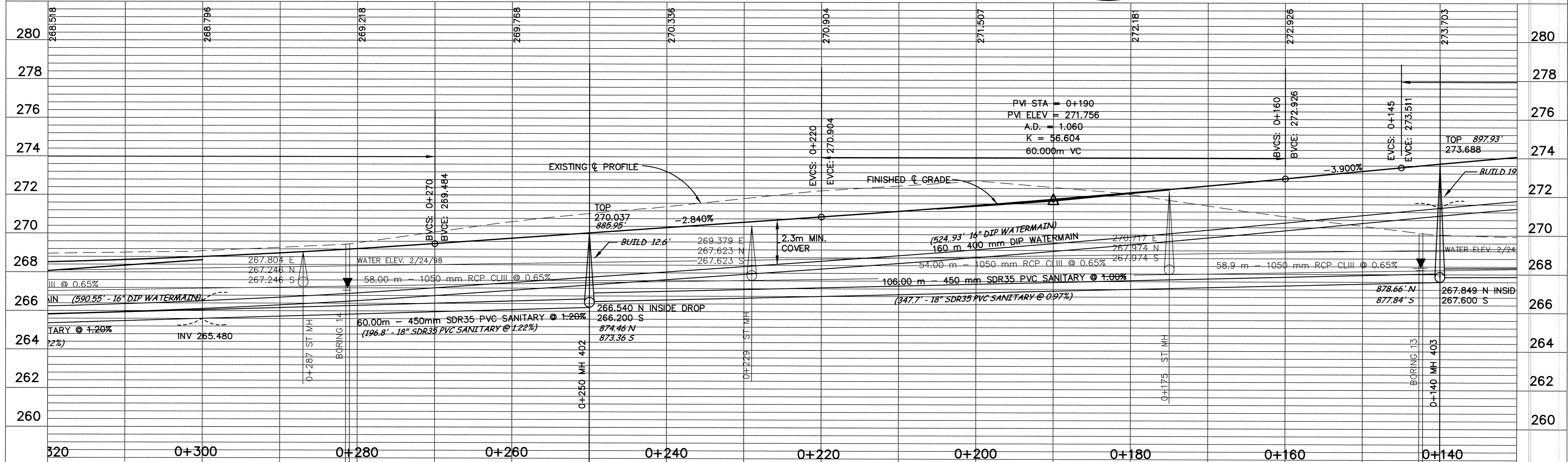
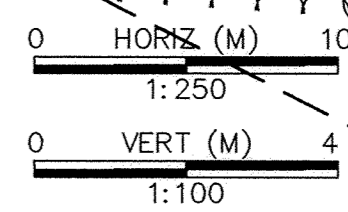


TYLER STREET



(36'-6" LEAD)
(16"x6" TEE-0+188)
HYD w/VALVE 0+188
11.0m-150mm LEAD
400mmX150mm TEE

EAST CURB G/L
= 34'43"25"
L = 109.14 m
T = 56.304 m
R = 180.087 m



DESIGNED BY: AB JOB DATE: MARCH 1998
 DRAWN BY: JOB NUMBER: 800110J
 APPROVED: CAD DATE:
 CAD FILE: October 08, 1998 8:47:38 a.m.
 800110J\Drawgs\Tyler_BASE\02.DWG

I HEREBY CERTIFY THAT THIS PLAN, SPECIFICATION,
 OR REPORT WAS PREPARED BY ME OR UNDER MY DIRECT
 SUPERVISION AND THAT I AM A DULY REGISTERED
 PROFESSIONAL ENGINEER UNDER THE LAWS OF THE
 STATE OF MINNESOTA.
 DATE: 10/15/98 REG. NO.: 15316

NO.	DATE	BY	REVISION DESCRIPTION

1326 ENERGY PARK DRIVE
 ST. PAUL, MINNESOTA 55108
 (612) 644-4389

Howard R. Green Company
 CONSULTING ENGINEERS

CITY OF ELK RIVER
 EASTERN AREA
 PHASE I IMPROVEMENTS

STREET AND UTILITY IMPROVEMENTS
 TYLER STREET
 0+140 TO 0+300

SHEET NO.
C1-3