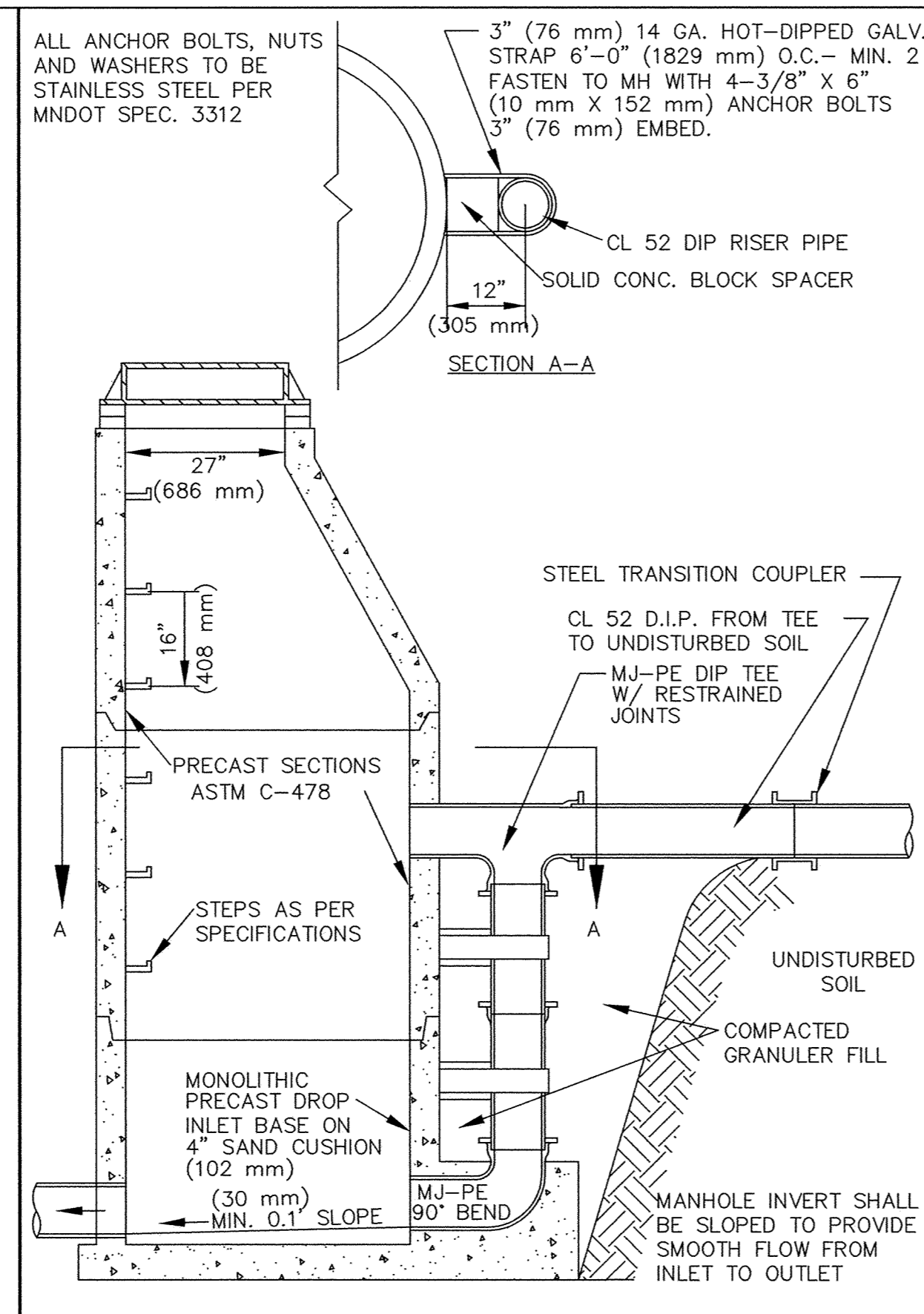
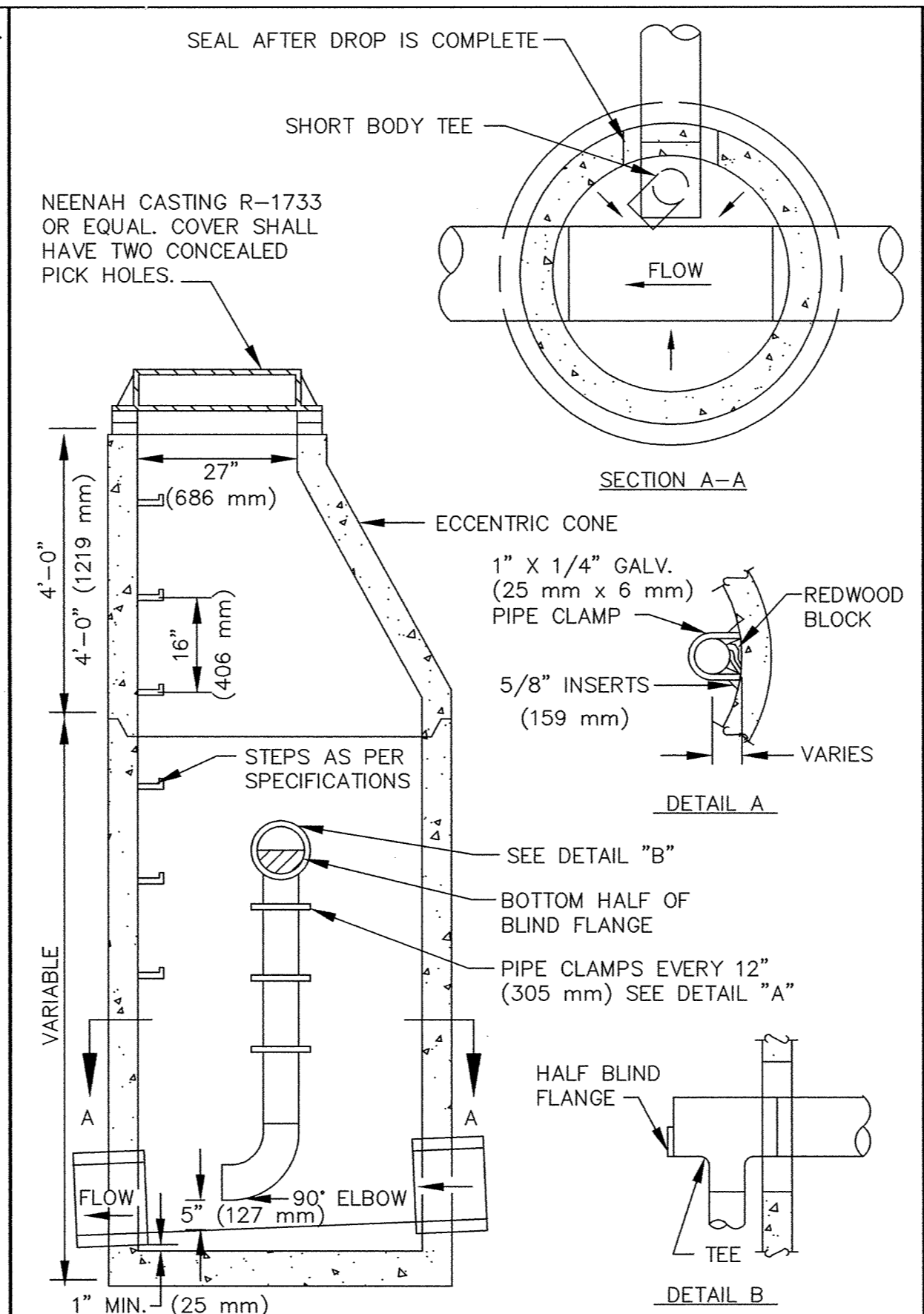


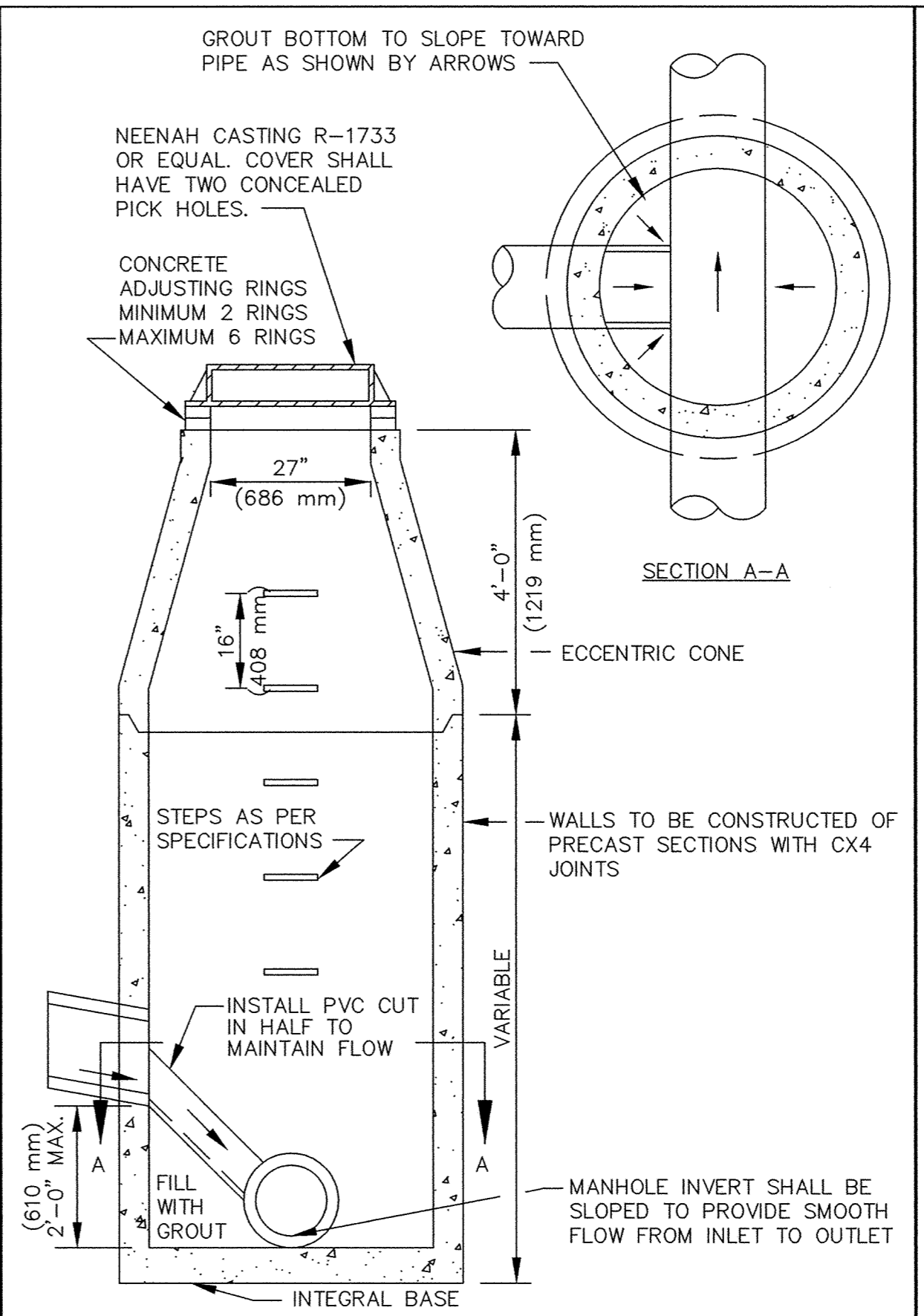
STANDARD AIR RELIEF MANHOLE



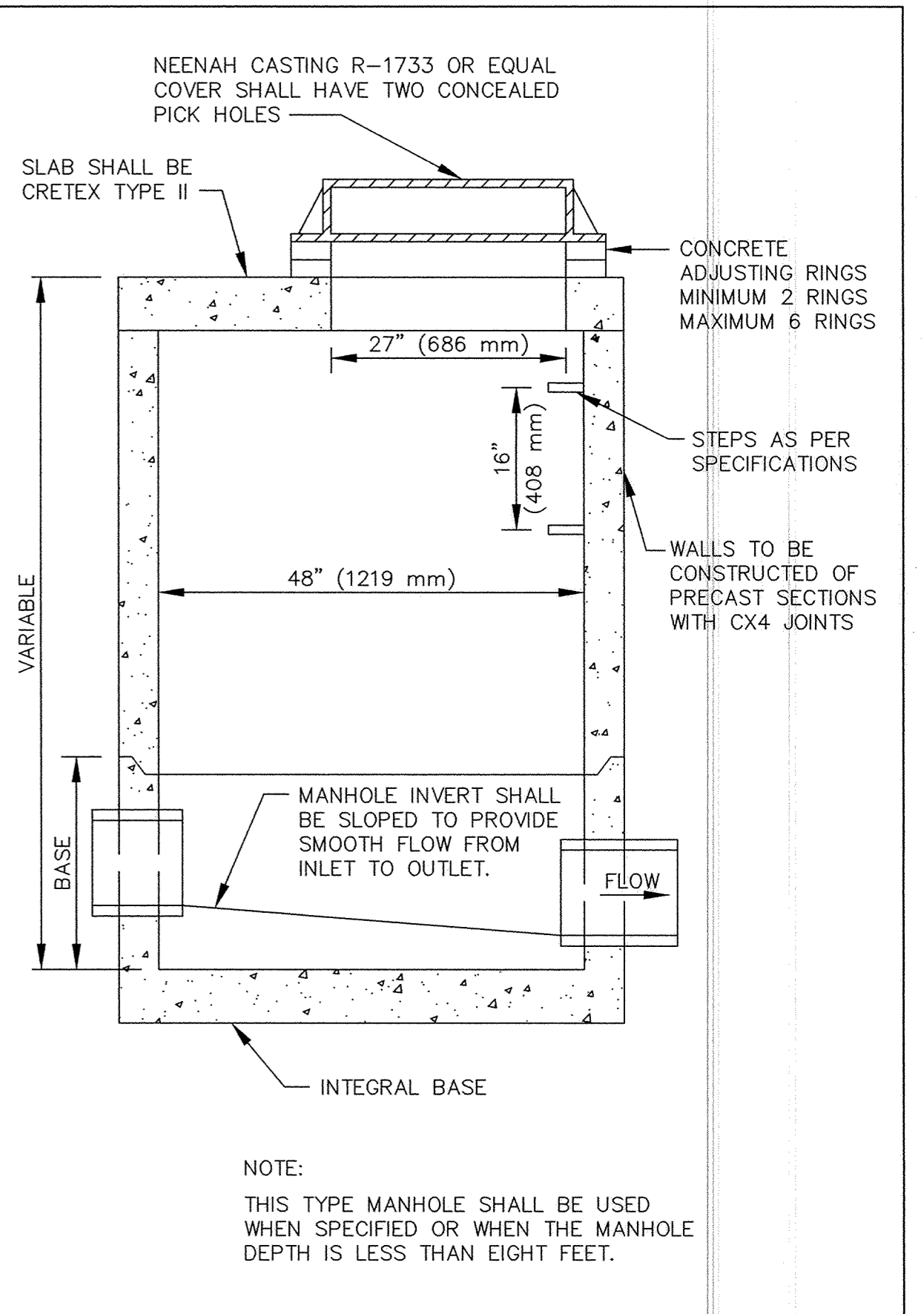
OUTSIDE DROP MANHOLE



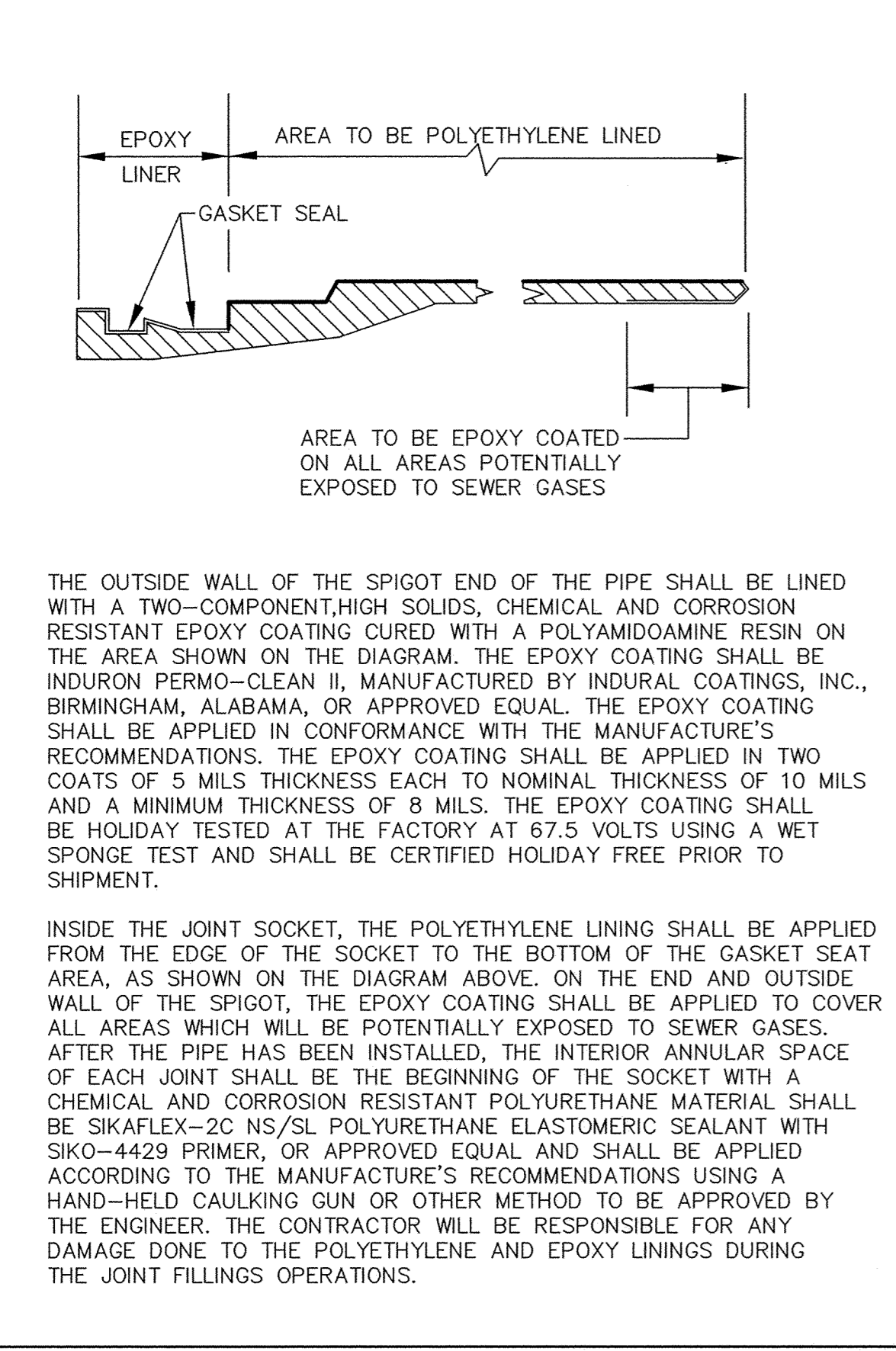
INSIDE DROP MANHOLE



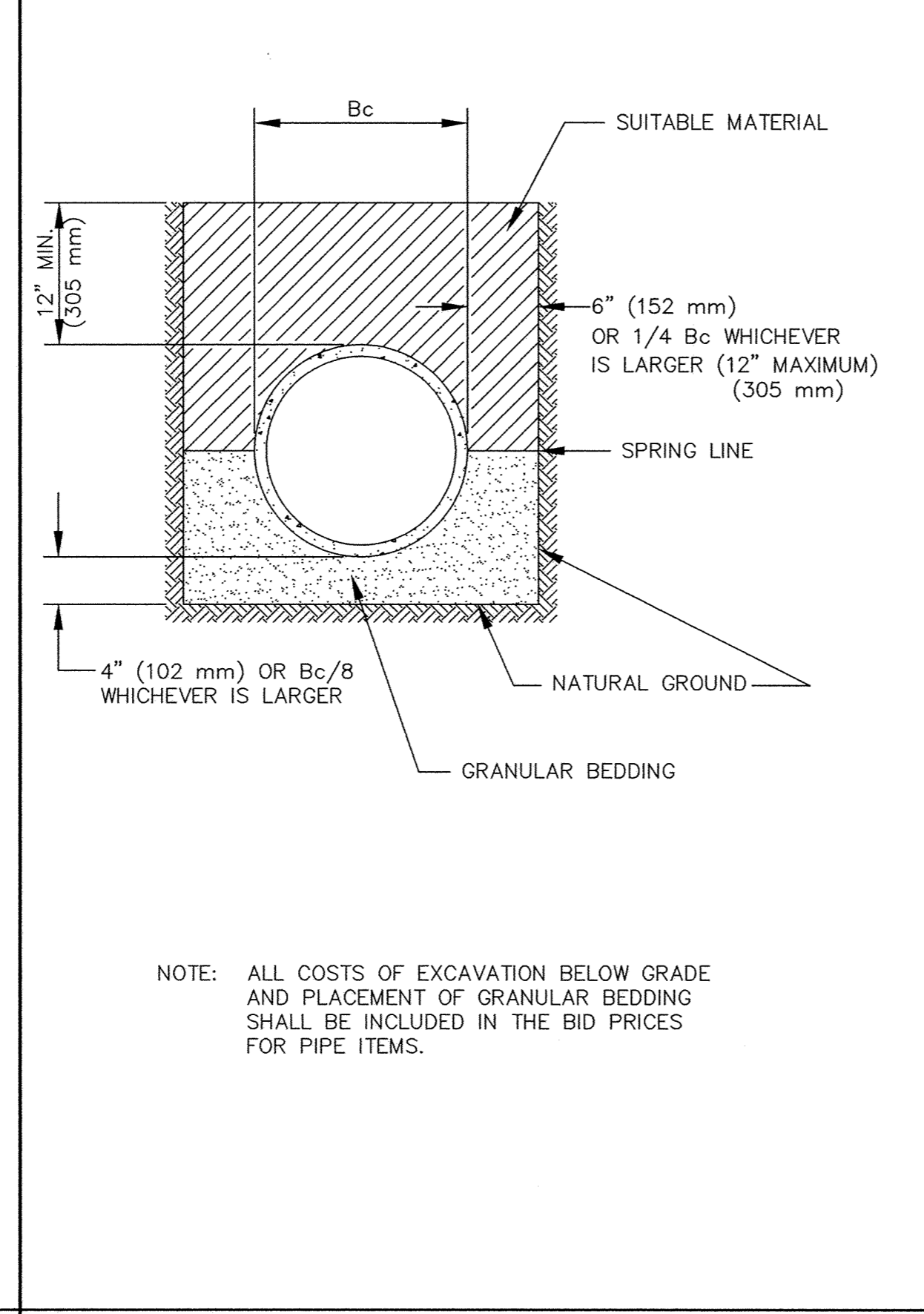
INSIDE DROP MANHOLE (TWO FEET OR LESS)



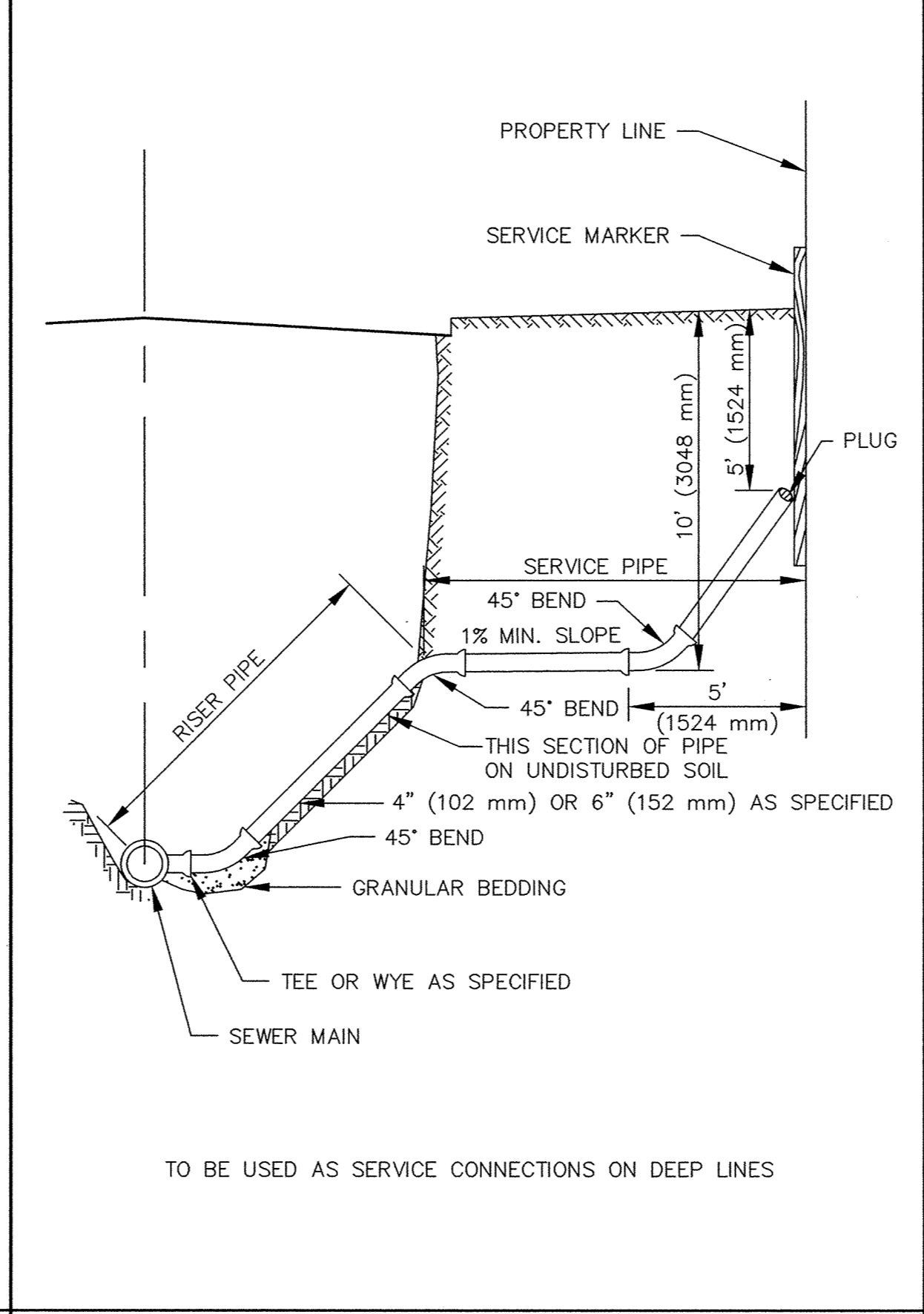
SLAB TOP MANHOLE



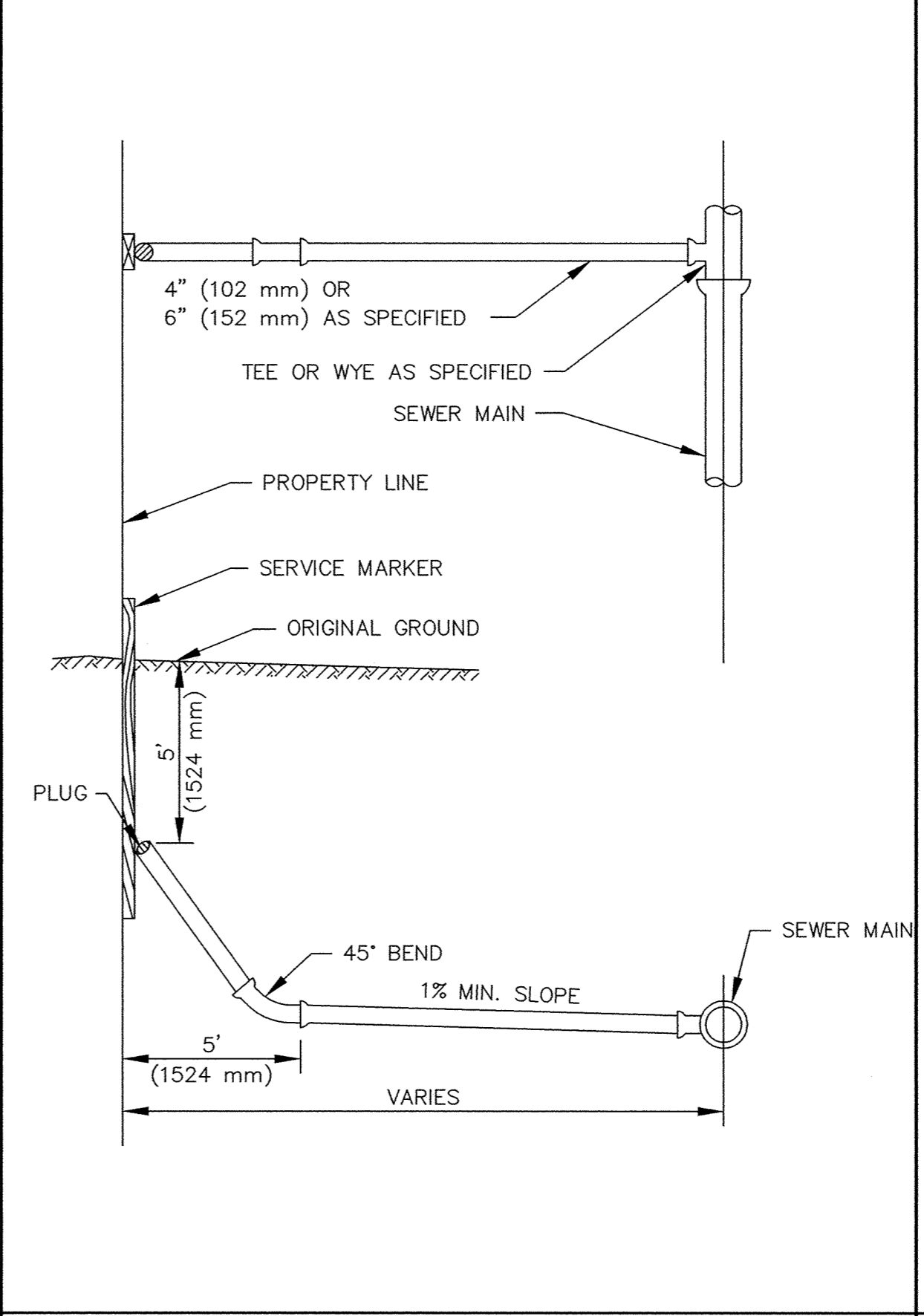
100 mm THRU 900 mm DIP JOINT LINING AND FILLER



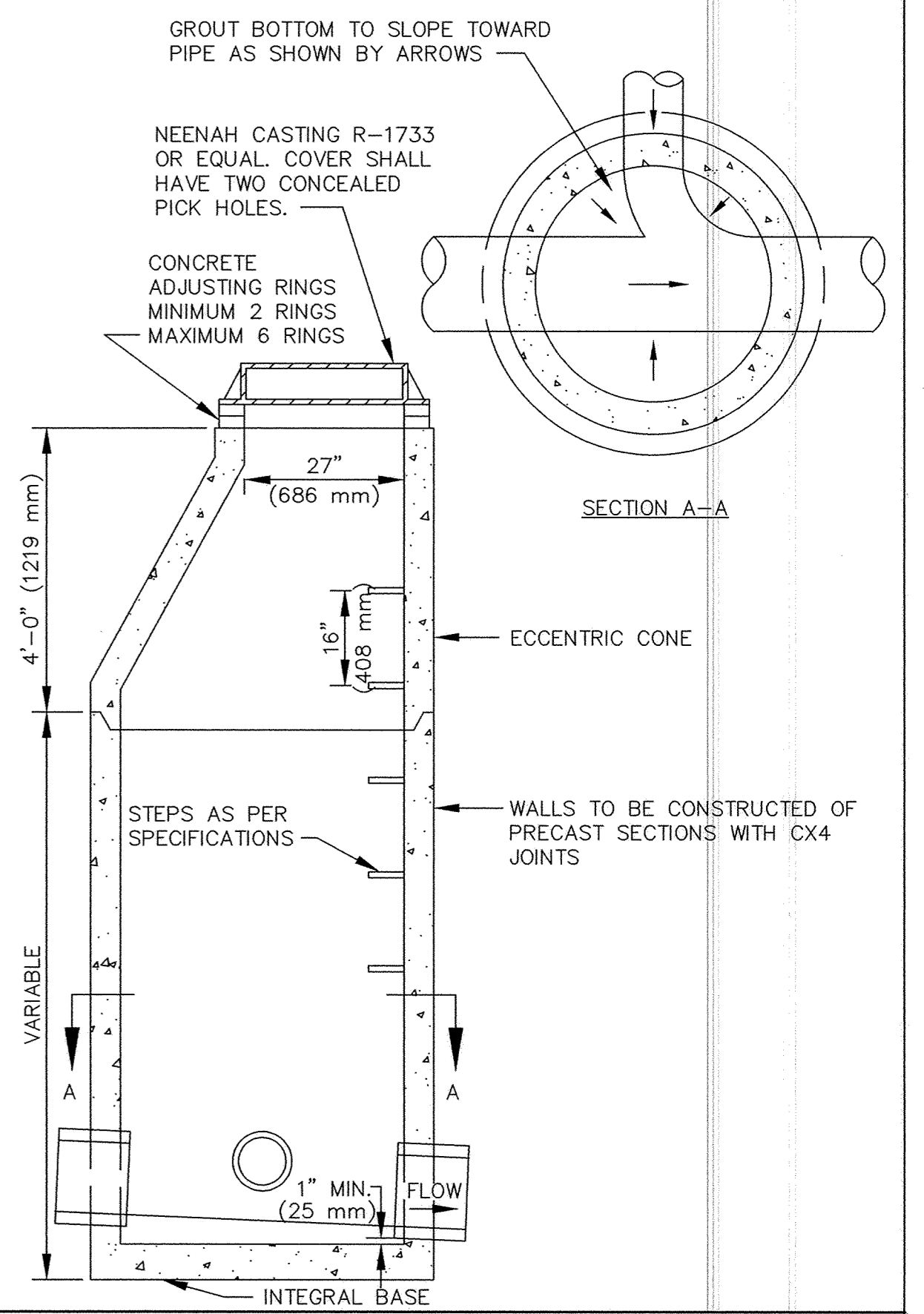
CLASS B PIPE BEDDING



SERVICE RISER SECTION



TYPICAL HOUSE SERVICE



STANDARD MANHOLE

DRAWN BY: \_\_\_\_\_ JOB DATE: SEPT. 1998  
APPROVED: \_\_\_\_\_ JOB NUMBER 800110J  
CAD DATE: SEPTEMBER 1998  
CAD FILE: 0/CAD/800110J/MISC/800110\_D3

I HEREBY CERTIFY THAT THIS PLAN, SPECIFICATION, OR REPORT WAS PREPARED BY ME OR UNDER MY DIRECT SUPERVISION AND THAT I AM A DULY REGISTERED PROFESSIONAL ENGINEER UNDER THE LAWS OF THE STATE OF MINNESOTA.  
DATE 10/15/98 REG. NO. 15316

NO.	DATE	BY	REVISION DESCRIPTION

1326 ENERGY PARK DRIVE  
ST. PAUL, MINNESOTA 55108  
(612) 644-4389  
**Howard R. Green Company**  
CONSULTING ENGINEERS

CITY OF ELK RIVER  
EASTERN AREA PHASE I IMPROVEMENTS  
SANITARY SEWER DETAILS

SHEET NO.  
G-3