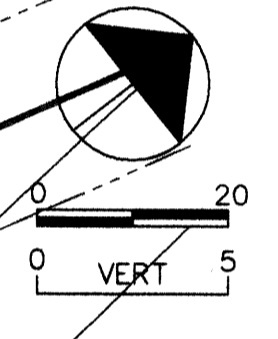


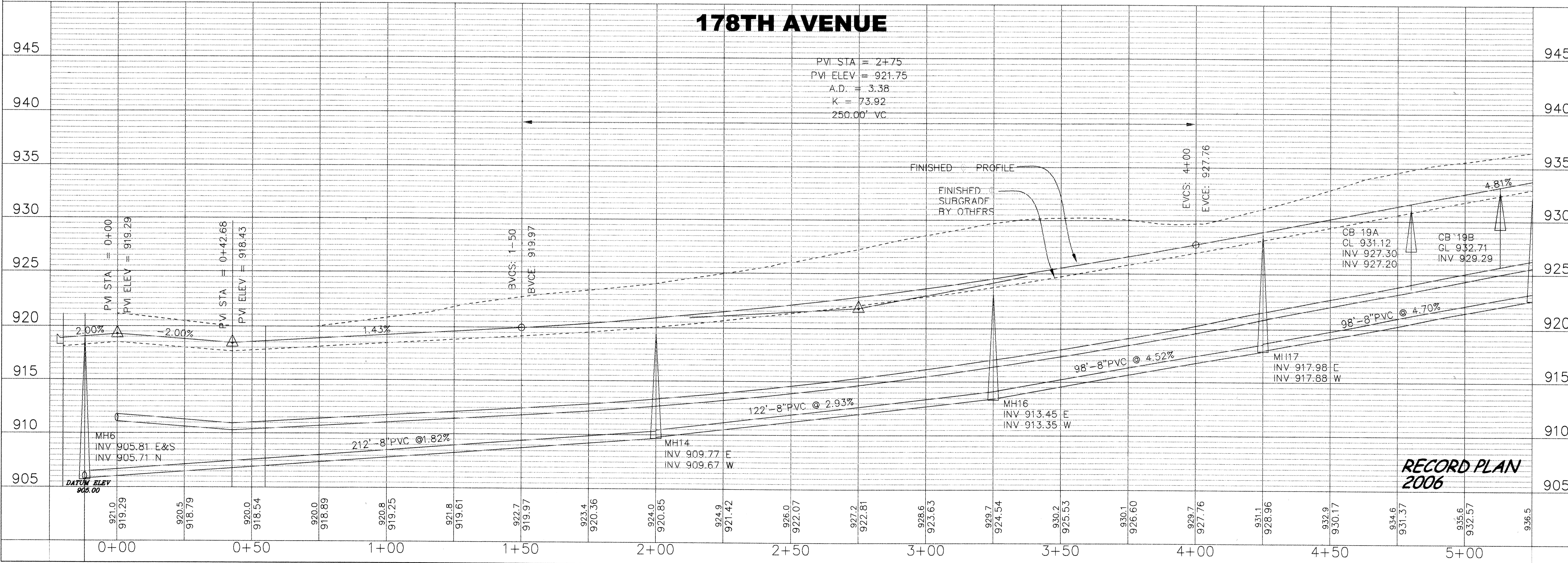
ALL STREET, SIDEWALK AND UTILITY WORK EAST OF INTERSECTION IS FUTURE CONSTRUCTION



REVISIONS	NO.	DATE	DESCRIPTION
	01	01/27/08	AS-BUILT PER CITY

I HEREBY CERTIFY THAT THIS PLAN, SPECIFICATION, OR REPORT WAS PREPARED BY ME OR UNDER MY DIRECT SUPERVISION AND THAT I AM A DULY LICENSED PROFESSIONAL ENGINEER UNDER THE LAWS OF THE STATE OF MINNESOTA.

JOHN M. ANDERSON
 March 17, 2006 DATE
 25889 U.C. NO.



**RIVERSIDE COMPANIES
 EAGLES MARSH 2ND ADDITION
 PLAN AND PROFILE
 178TH AVENUE**

BDM
 CONSULTING ENGINEERS, PLC
 Engineers and Surveyors
 4175 Lovell Road, Suite 112
 Lexington, MN 55014
 Phone: (763) 786-4570
 Fax: (763) 786-4574
 bdmce.com

DRAWN BY: JL
 CHECKED BY: JMA
 DESIGNED BY: JL
 JOB NO. 226088

SAFCO PRODUCTS • NEW HOPE, MINNESOTA
 DRAWING NUMBER 5550
 REVISIONS BY: JMA (DATE) (DESCRIPTION)
 01/27/08 AS-BUILT PER CITY
 JOHN M. ANDERSON
 March 17, 2006 DATE
 25889 U.C. NO.
 I HEREBY CERTIFY THAT THIS PLAN, SPECIFICATION, OR REPORT WAS PREPARED BY ME OR UNDER MY DIRECT SUPERVISION AND THAT I AM A DULY LICENSED PROFESSIONAL ENGINEER UNDER THE LAWS OF THE STATE OF MINNESOTA.