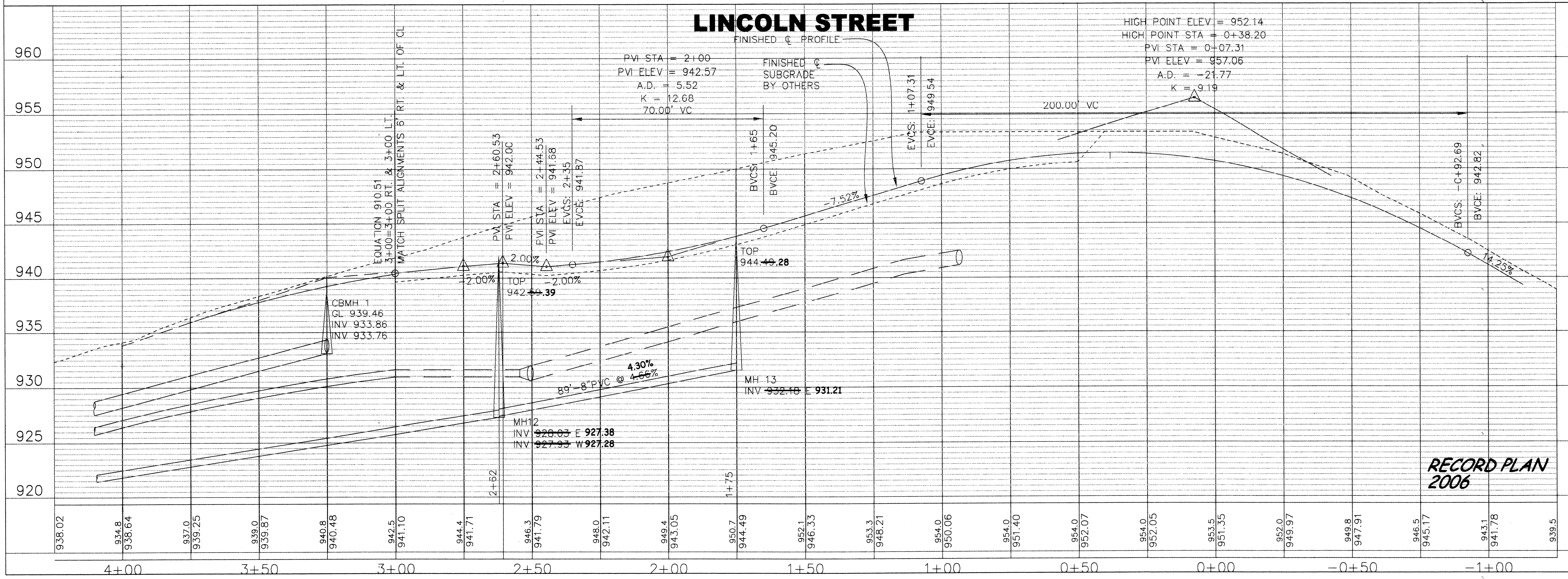
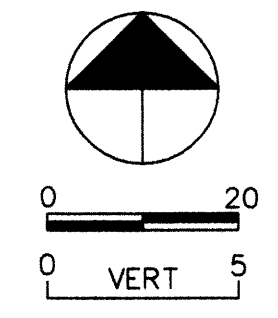


REVISIONS	NO.	DATE	BY	DESCRIPTION
	01	07/27/08	EY	AS-BUILT PER CITY

I HEREBY CERTIFY THAT THIS PLAN, SPECIFICATION, OR REPORT WAS PREPARED BY ME OR UNDER MY DIRECT SUPERVISION AND THAT I AM A DULY LICENSED PROFESSIONAL ENGINEER UNDER THE LAWS OF THE STATE OF MINNESOTA.

JOHN M. ANDERSON
 March 17, 2006
 DATE

25889
 LIC. NO.



RIVERSIDE COMPANIES
EAGLES MARSH 2ND ADDITION
PLAN AND PROFILE
LONGCOLN STREET - 177TH AVENUE

BDM
 CONSULTING ENGINEERS, PLC
 Engineers and Surveyors
 4175 Lovell Road, Suite 112
 Lexington, MN 55014
 Phone: (763) 786-4570
 Fax: (763) 786-4574
 bdmce.com

DRAWN BY: JL
 CHECKED BY: JMA
 DESIGNED BY: JL
 JOB NO. 226088

SHEET **P7** SHEETS **26**

RECORD PLAN 2006

SAPIO PRODUCTS • NEW HOPE, MINNESOTA
 PREPARED BY PAUL KAMBER 6592
 DRAWING NUMBER