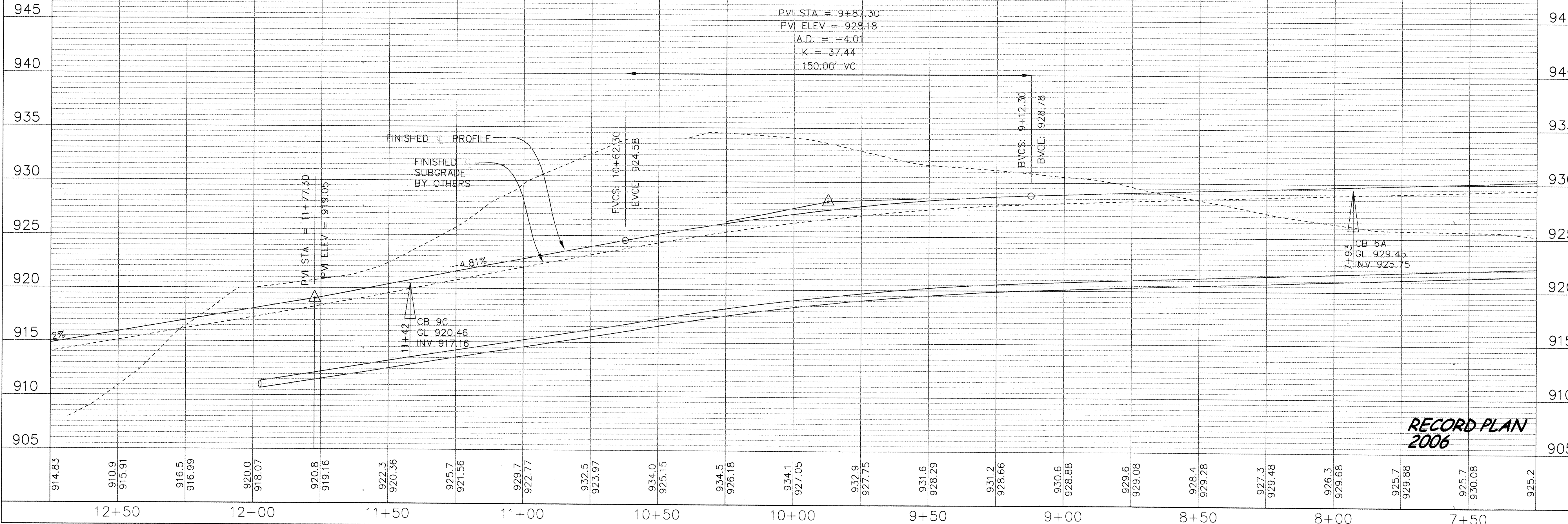


### LINCOLN STREET - NORTH BOUND



**RIVERSIDE COMPANIES**  
**EAGLES MARSH 2ND ADDITION**  
**PLAN AND PROFILE**  
**LINCOLN STREET - NORTHBOUND LANE**

**BDM**  
 CONSULTING ENGINEERS, PLC  
 Engineers and Surveyors  
 4175 Lovell Road, Suite 112  
 Lexington, MN 55014  
 Phone: (763) 786-4570  
 Fax: (763) 786-4574  
 bdmce.com

DRAWN BY: JL  
 CHECKED BY: JMA  
 DESIGNED BY: JL

JOB NO. 226088

SHEET **P5** SHEETS **26**

NO.	DATE	BY	DESCRIPTION
01	07/27/08	EY	AS-BUILT PER CITY

I HEREBY CERTIFY THAT THIS PLAN, SPECIFICATIONS AND CONTRACT WAS PREPARED BY ME OR UNDER MY DIRECT SUPERVISION AND THAT I AM A DULY LICENSED PROFESSIONAL ENGINEER UNDER THE LAWS OF THE STATE OF MINNESOTA.

JOHN M. ANDERSON  
 March 17, 2006  
 DATE

25889  
 LIC. NO.

SAPIO PRODUCTS • NEW HOPE, MINNESOTA  
 REGISTERED BY PART NUMBER 5502  
 PROFESSIONAL SEAL OF JOHN M. ANDERSON