

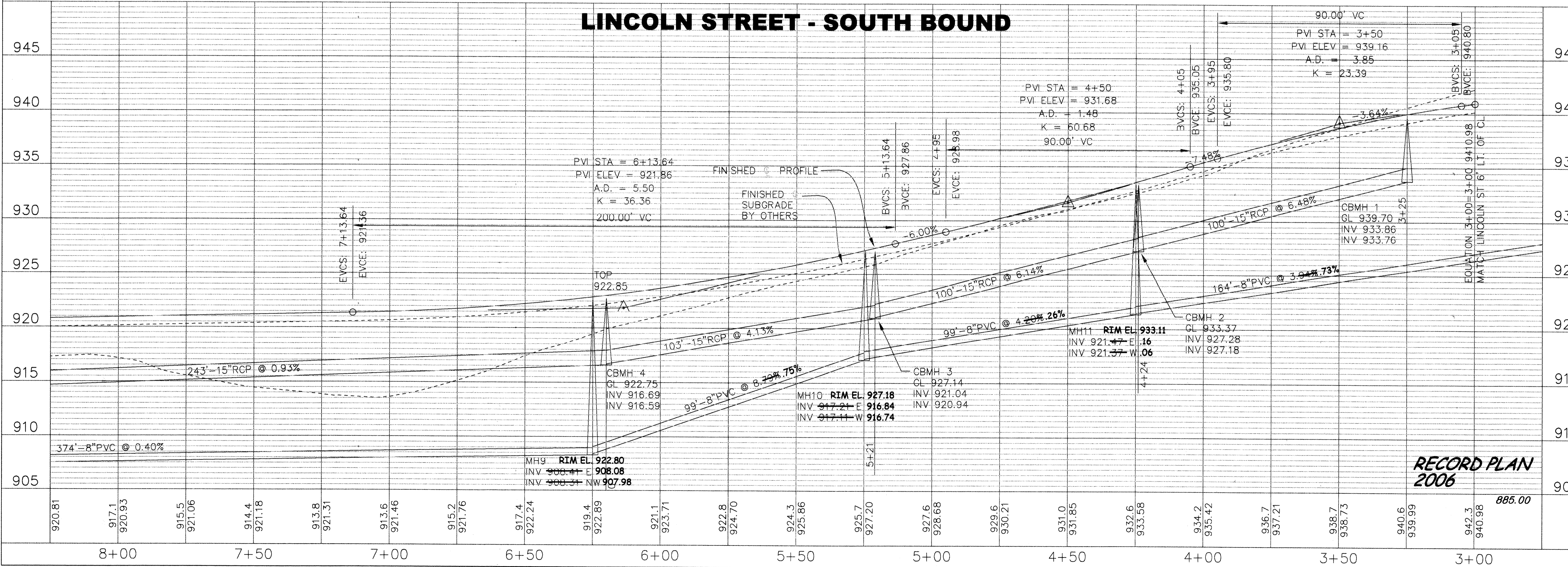
REVISIONS	NO.	DATE	DESCRIPTION
	1	07/27/08	AS-BUILT PER CITY

I HEREBY CERTIFY THAT THIS PLAN, SPECIFICATION, OR REPORT WAS PREPARED BY ME OR UNDER MY DIRECT SUPERVISION AND THAT I AM A DULY LICENSED PROFESSIONAL ENGINEER UNDER THE LAWS OF THE STATE OF MINNESOTA.

JOHN M. ANDERSON
 March 17, 2006
 DATE

25889
 U.C. NO.

RIVERSIDE COMPANIES
EAGLES MARSH 2ND ADDITION
PLAN AND PROFILE
LINCOLN STREET SOUTHBOUND LANE



BDM
 CONSULTING ENGINEERS, P.L.C.
 Engineers and Surveyors
 4175 Lovell Road, Suite 112
 Lexington, MN 55014
 Phone: (763) 786-4570
 Fax: (763) 786-4574
 bdmce.com

DRAWN BY: JL

CHECKED BY: JMA

DESIGNED BY: JL

JOB NO. 226088

SHEET **P4** SHEETS **26**

SACO PRODUCTS • NEW HOPE, MINNESOTA
 REPRODUCED BY PART NUMBER 6502
 PRINTED IN THE USA
 SACO PRODUCTS • NEW HOPE, MINNESOTA
 REPRODUCED BY PART NUMBER 6502
 PRINTED IN THE USA
 SACO PRODUCTS • NEW HOPE, MINNESOTA
 REPRODUCED BY PART NUMBER 6502
 PRINTED IN THE USA