

REVISIONS	
NO.	DESCRIPTION
1	AS-BUILT PER CITY
2	
3	
4	
5	
6	
7	
8	
9	
10	

NO. DATE BY DESCRIPTION

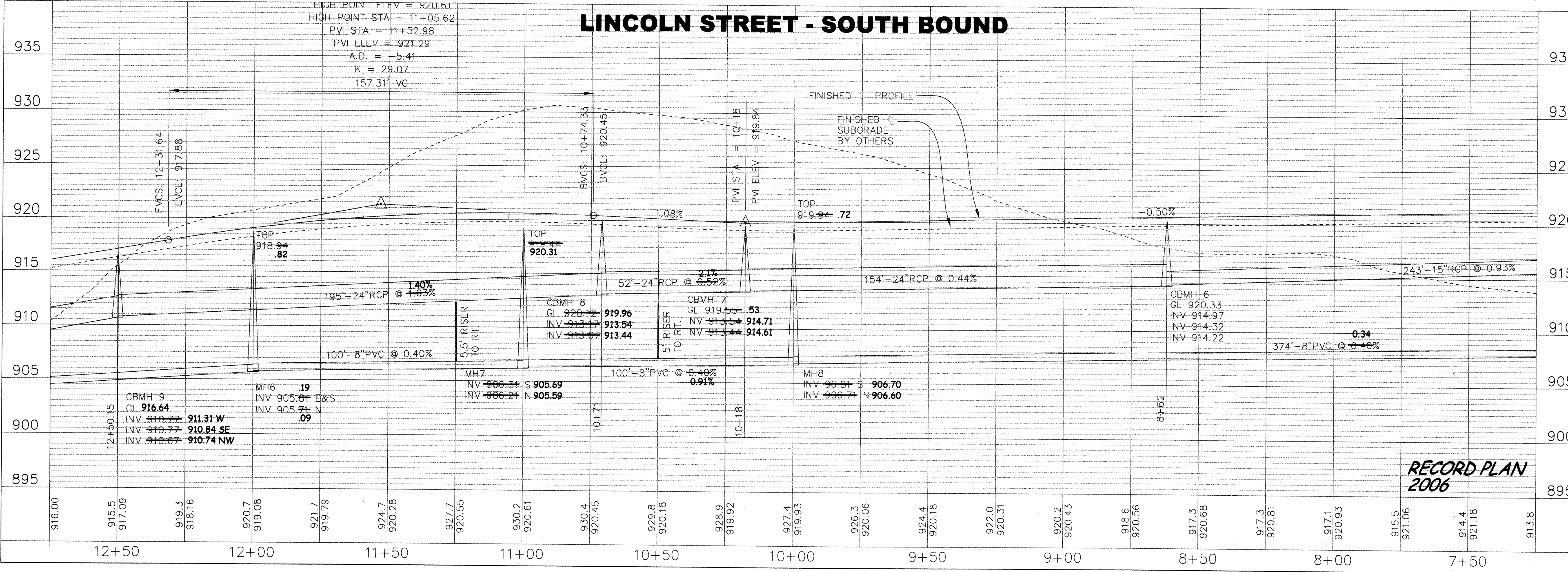
01/27/08 EY AS-BUILT PER CITY

I HEREBY CERTIFY THAT THIS PLAN, SPECIFICATION, OR REPORT WAS PREPARED BY ME OR UNDER MY DIRECT SUPERVISION AND THAT I AM A LICENSED PROFESSIONAL ENGINEER UNDER THE LAWS OF THE STATE OF MINNESOTA.

DATE: March 17, 2006

JOHN M. ANDERSON
L.C. NO. 25889

RIVERSIDE COMPANIES
EAGLES MARSH 2ND ADDITION
PLAN AND PROFILE
LINCOLN STREET SOUTHBOUND LANE



BDM
CONSULTING ENGINEERS, P.L.C.
Engineers and Surveyors
4175 Lovell Road, Suite 112
Lexington, MN 55014
Phone: (763) 786-4570
Fax: (763) 786-4574
bdmce.com

RECORD PLAN 2006

JOB NO. 226088

SHEET **P3** SHEETS **26**

DRAWN BY: JL
CHECKED BY: JMA
DESIGNED BY: JL

SAFCO PRODUCTS • NEW HOPKINS, MINNESOTA
RENDERED BY PART NUMBER 8552

SAFCO PRODUCTS • NEW HOPKINS, MINNESOTA
RENDERED BY PART NUMBER 8552

SAFCO PRODUCTS • NEW HOPKINS, MINNESOTA
RENDERED BY PART NUMBER 8552

SAFCO PRODUCTS • NEW HOPKINS, MINNESOTA
RENDERED BY PART NUMBER 8552