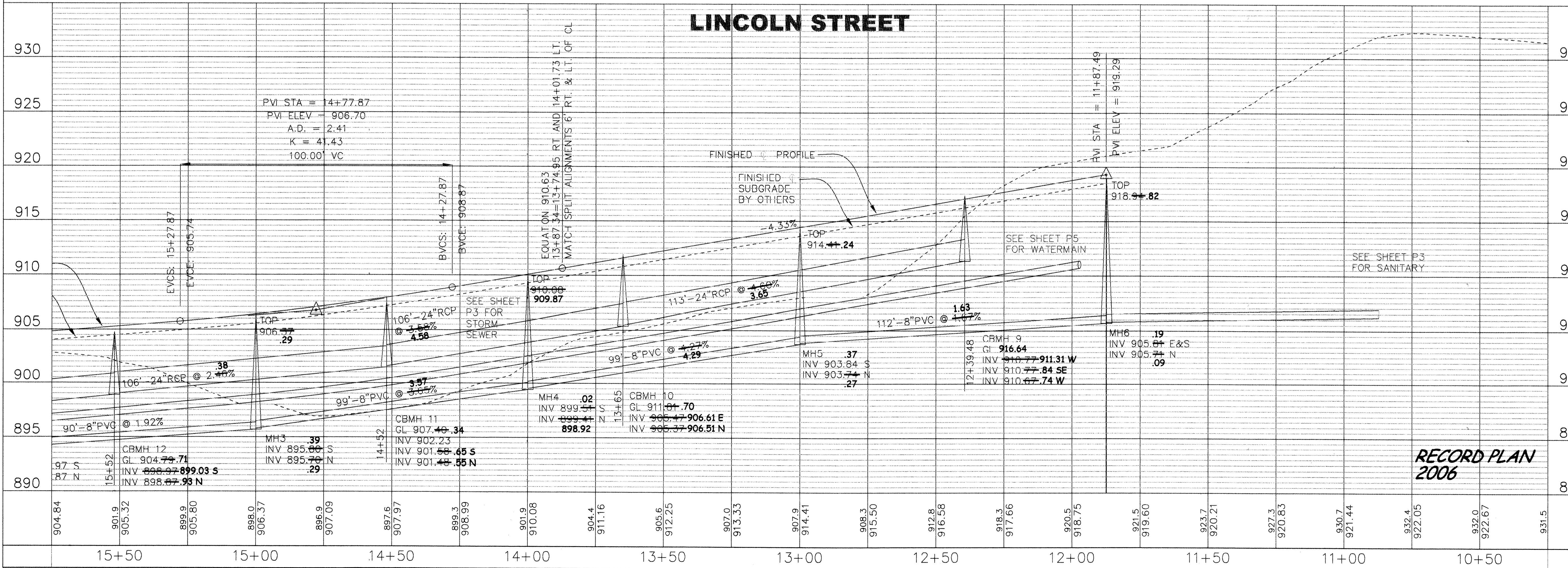


NO.	DATE	DESCRIPTION

I HEREBY CERTIFY THAT THIS PLAN, SPECIFICATION, OR REPORT WAS PREPARED BY ME OR UNDER MY DIRECT SUPERVISION AND THAT I AM A DULY LICENSED PROFESSIONAL ENGINEER UNDER THE LAWS OF THE STATE OF MINNESOTA.

JOHN M. ANDERSON  
 March 17, 2006  
 DATE

25889  
 LIC. NO.



**RIVERSIDE COMPANIES  
 EAGLES MARSH 2ND ADDITION  
 PLAN AND PROFILE  
 LOCATION**

**BDM**  
 CONSULTING ENGINEERS, PLC  
 Engineers and Surveyors  
 4175 Lovell Road, Suite 112  
 Lexington, MN 55014  
 Phone: (763) 786-4570  
 Fax: (763) 786-4574  
 bdmce.com

DRAWN BY: JL  
 CHECKED BY: JMA  
 DESIGNED BY: JL  
 JOB NO. 226088

**RECORD PLAN  
 2006**

SHEET	SHEETS
<b>P2</b>	<b>26</b>

SACO PRODUCTS • NEW HOPE, MINNESOTA  
 REPRODUCED BY PART NUMBER 8552  
 DRAWING NUMBER  
 SACO PRODUCTS • NEW HOPE, MINNESOTA  
 REPRODUCED BY PART NUMBER 8552  
 DRAWING NUMBER  
 SACO PRODUCTS • NEW HOPE, MINNESOTA  
 REPRODUCED BY PART NUMBER 8552  
 DRAWING NUMBER