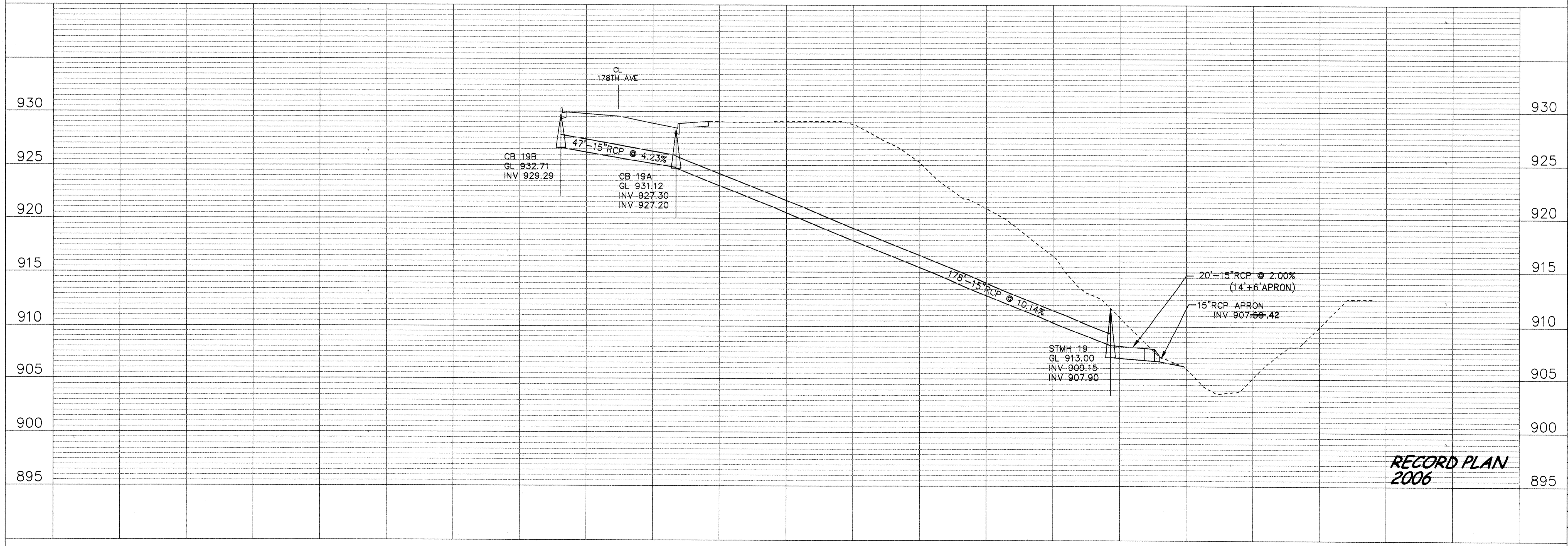
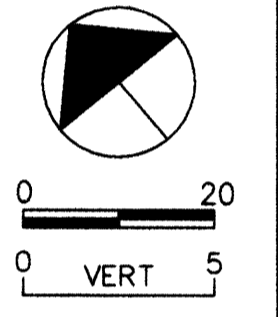
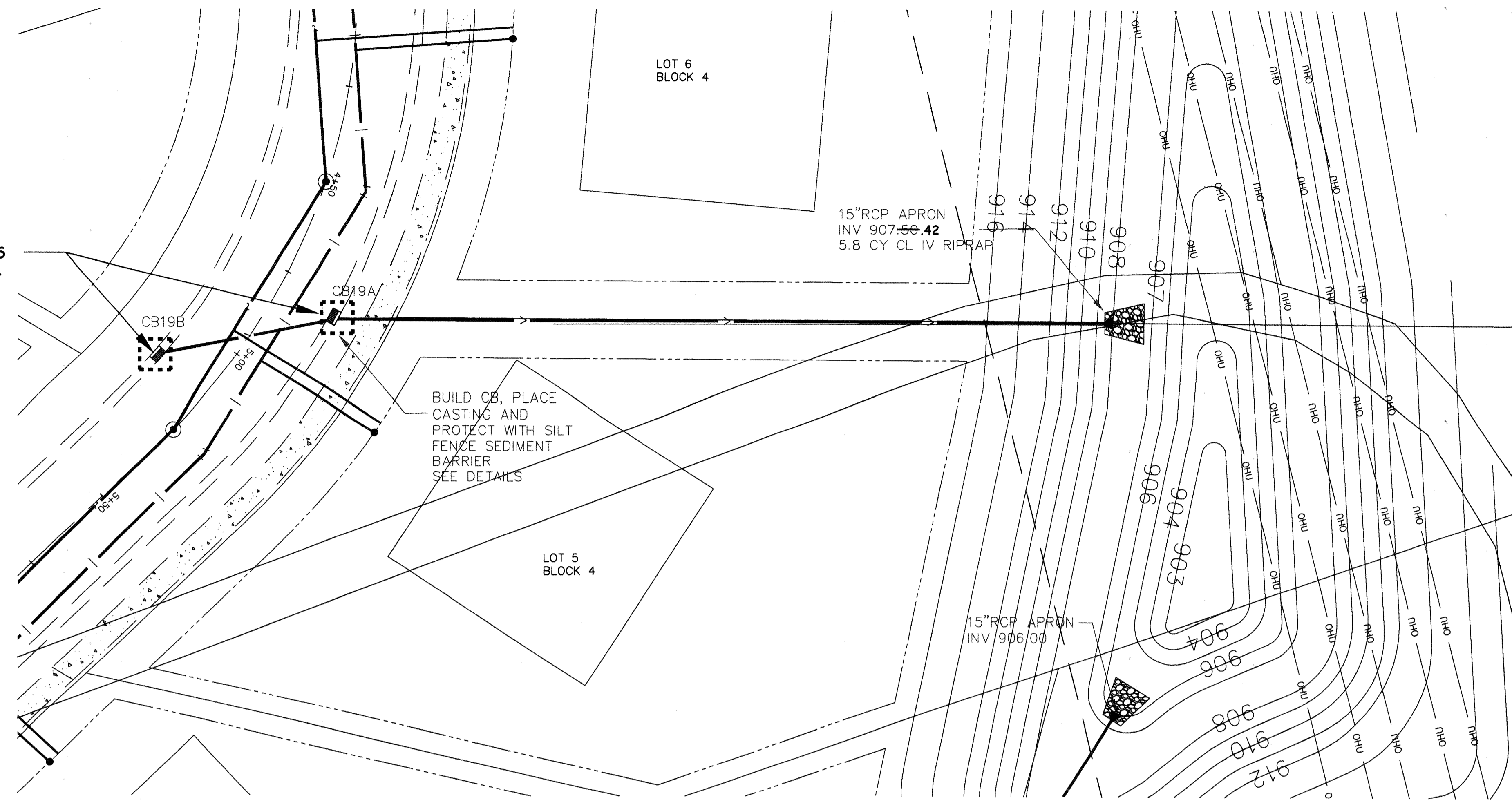


NOTE: AS-BUILT INFORMATION FOR STMH19  
AND CB19A WILL BE ADDED WHEN EAGLES  
MARSH 3RD ADDITION IS CONSTRUCTED.



**RECORD PLAN  
2006**

**RIVERSIDE COMPANIES  
EAGLES MARSH 2ND ADDITION  
PLAN AND PROFILE  
STORM SEWER**

**BDM**  
CONSULTING ENGINEERS, PLC  
Engineers and Surveyors  
4175 Lovell Road, Suite 112  
Lexington, MN 55014  
Phone: (763) 786-4570  
Fax: (763) 786-4574  
bdmce.com

DRAWN BY: JL  
CHECKED BY: JMA  
DESIGNED BY: JL  
JOB NO. 226088

SHEET  
**P17**

SHEETS  
**26**

I HEREBY CERTIFY THAT THIS PLAN,  
SPECIFICATION, OR REPORT WAS  
PREPARED BY ME OR UNDER MY  
SUPERVISION AND THAT I AM A DULY  
LICENSED PROFESSIONAL ENGINEER UNDER  
THE LAWS OF THE STATE OF MINNESOTA.

JOHN M. ANDERSON  
March 17, 2006 25889  
DATE LIC. NO.

REVISIONS			
NO.	DATE	DESCRIPTION	BY
1	07/27/06	AS-BUILT PER CITY	EY

SADDI PRODUCTS • NEW HOPE, MINNESOTA  
 REVISION BY PART NUMBER 6552  
 PREPARED UNDER THE CLOSE SUPERVISION OF JOHN M. ANDERSON, P.E.  
 SADDI PRODUCTS • NEW HOPE, MINNESOTA  
 REVISION BY PART NUMBER 6552  
 PREPARED UNDER THE CLOSE SUPERVISION OF JOHN M. ANDERSON, P.E.

DRAWING NUMBER  
 DRAWING NUMBER