

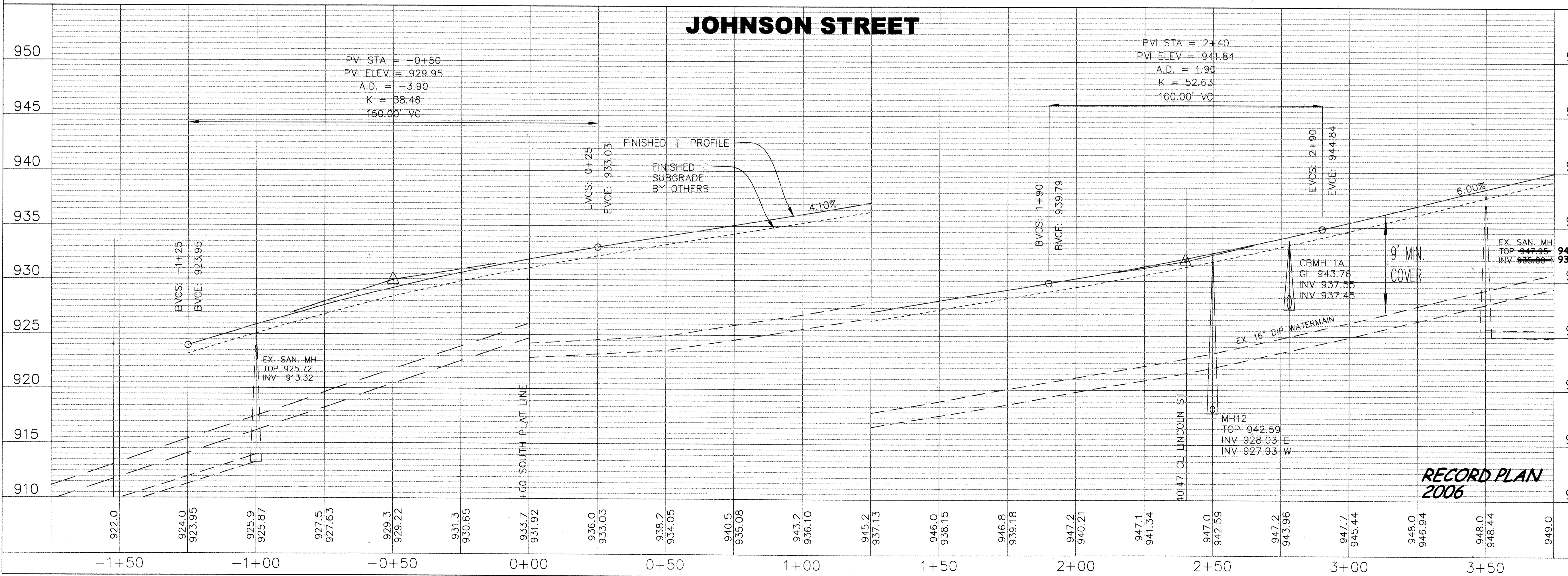
REVISIONS	NO.	DATE	DESCRIPTION
	BY	ET	AS-BUILT PER CITY
	07/27/08		

I HEREBY CERTIFY THAT THIS PLAN, SPECIFICATION, OR REPORT WAS PREPARED BY ME OR UNDER MY DIRECT SUPERVISION AND THAT I AM A DULY LICENSED PROFESSIONAL ENGINEER UNDER THE LAWS OF THE STATE OF MINNESOTA.

JOHN M. ANDERSON
March 17, 2006
DATE

LIC. NO. 25869

**RIVERSIDE COMPANIES
EAGLES MARSH 2ND ADDITION
PLAN AND PROFILE
JOHNSON STREET**



BDM
CONSULTING ENGINEERS, PLC
Engineers and Surveyors
4175 Lovell Road, Suite 112
Lexington, MN 55014
Phone: (763) 786-4570
Fax: (763) 786-4574
bdmce.com

DRAWN BY: JL
CHECKED BY: JMA
DESIGNED BY: JL

JOB NO. 226088

SHEET **P10** SHEETS **26**

DRAWING NUMBER: 226088-010
SHEET NO. 10 OF 26
RIVERSIDE COMPANIES
EAGLES MARSH 2ND ADDITION
JOHNSON STREET
DATE: 07/27/08
BY: ET
AS-BUILT PER CITY