

NO.	DATE	BY	DESCRIPTION
1	01/27/08	EY	AS-BUILT PER CITY

I HEREBY CERTIFY THAT THIS PLAN, SPECIFICATIONS, OR REPORT WAS PREPARED BY ME OR UNDER MY DIRECT SUPERVISION AND THAT I AM A DULY LICENSED PROFESSIONAL ENGINEER UNDER THE LAWS OF THE STATE OF MINNESOTA.

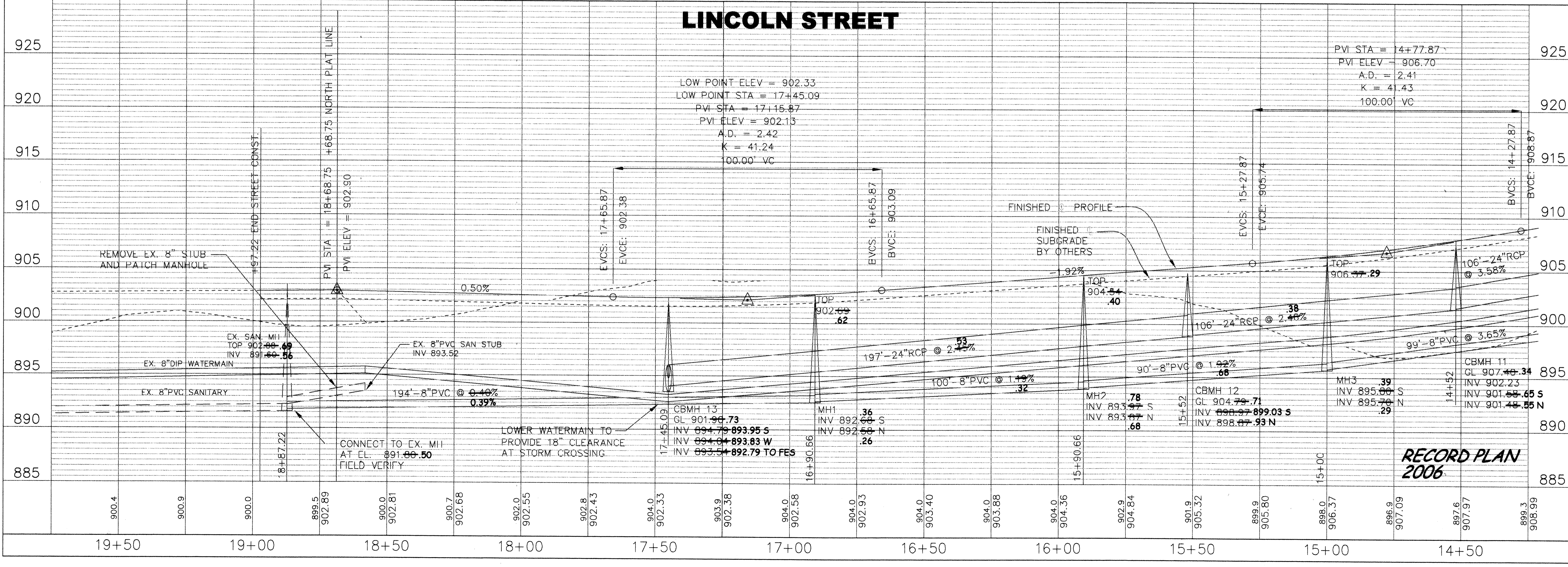
JOHN M. ANDERSON
 DATE: March 17, 2006
 LIC. NO. 25889

RIVERSIDE COMPANIES
EAGLES MARSH 2ND ADDITION
PLAN AND PROFILE
LINCOLN STREET

BDM
 CONSULTING ENGINEERS, P.L.C.
 Engineers and Surveyors
 4176 Lovell Road, Suite 112
 Lexington, MN 55014
 Phone: (763) 786-4570
 Fax: (763) 786-4574
 bdmce.com

DRAWN BY: JL
 CHECKED BY: JMA
 DESIGNED BY: JL
 JOB NO. 226088

SHEET **P1** SHEETS **26**



RECORD PLAN
2006