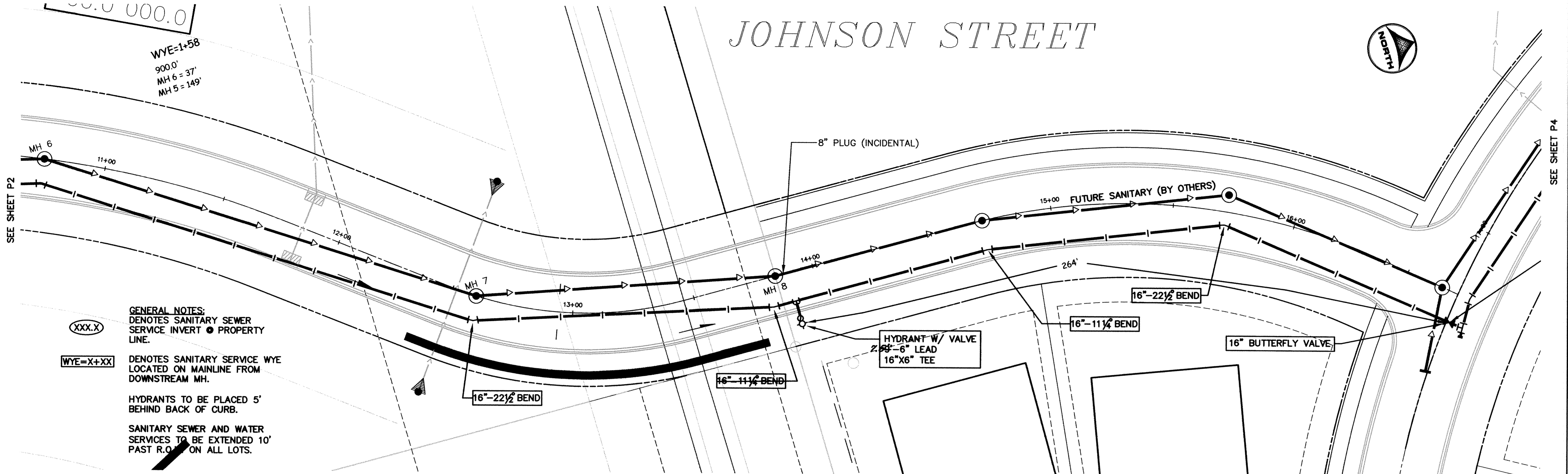
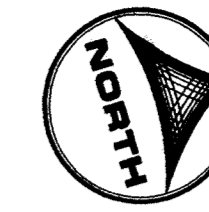
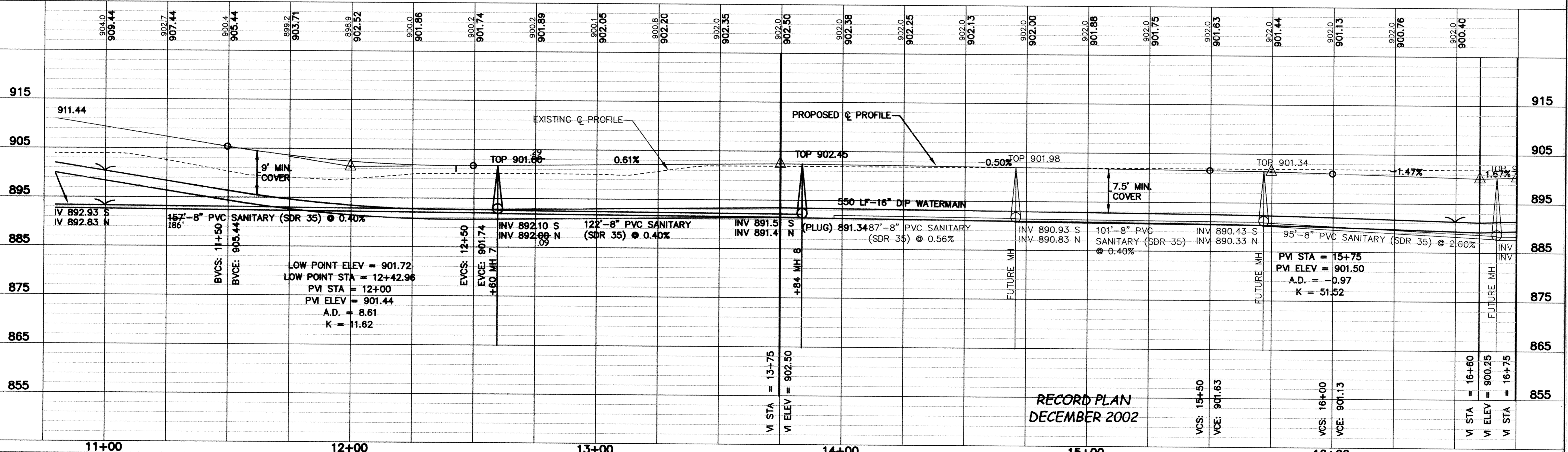


# JOHNSON STREET



**GENERAL NOTES:**  
 DENOTES SANITARY SEWER SERVICE INVERT ● PROPERTY LINE.  
 (XXX.X) DENOTES SANITARY SERVICE WYE LOCATED ON MAINLINE FROM DOWNSTREAM MH.  
 WYE=X+XX  
 HYDRANTS TO BE PLACED 5' BEHIND BACK OF CURB.  
 SANITARY SEWER AND WATER SERVICES TO BE EXTENDED 10' PAST R.O. ON ALL LOTS.



RECORD PLAN  
 DECEMBER 2002

DESIGNED BY: KT DRAWN BY: EY/RM  
 APPROVED BY: JOB NUMBER 816050J  
 CAD DATE: February 01, 2003 9:06:48 a.m.  
 CAD FILE: 816050j\dwg\XCS-BASE.DWG (JLALLEN)

I HEREBY CERTIFY THAT THIS PLAN, SPECIFICATION, OR REPORT WAS PREPARED BY ME OR UNDER MY DIRECT SUPERVISION AND THAT I AM A DULY LICENSED PROFESSIONAL ENGINEER UNDER THE LAWS OF THE STATE OF MINNESOTA.  
 SIGNATURE: TERRY J. MAURER DATE: \_\_\_\_\_  
 PRINTED NAME: TERRY J. MAURER LIC. NO. 15316

NO.	DATE	BY	REVISION DESCRIPTION

ELK RIVER MUNICIPAL UTILITIES  
 EAGLE MARSH

SANITARY SEWER AND WATERMAIN IMPROVEMENTS  
 STA. 11+00 TO 16+50

SHEET NO.  
**P3**