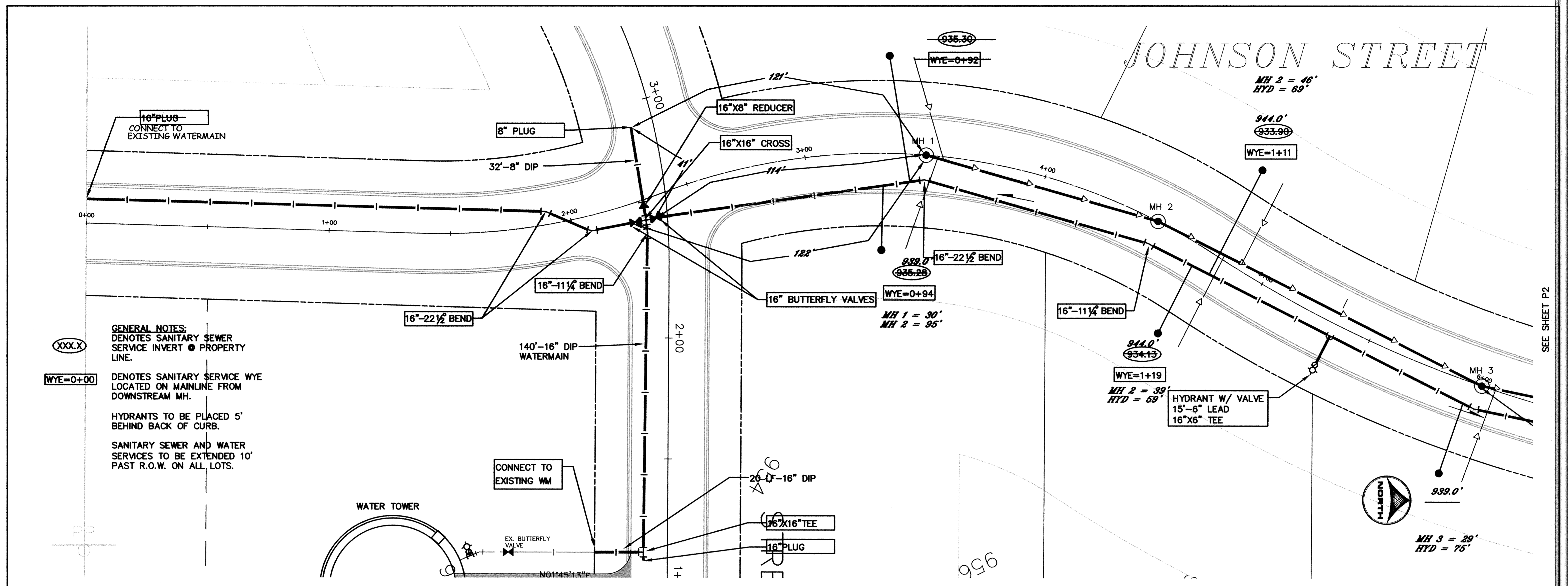
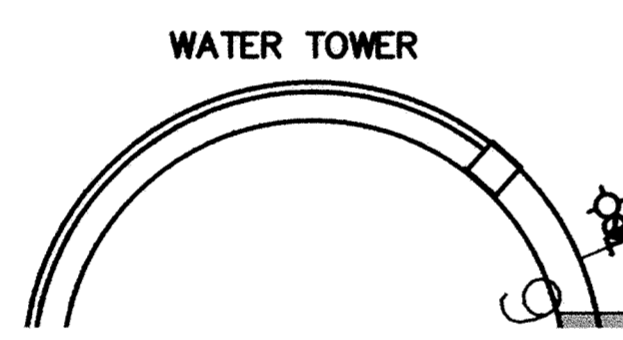


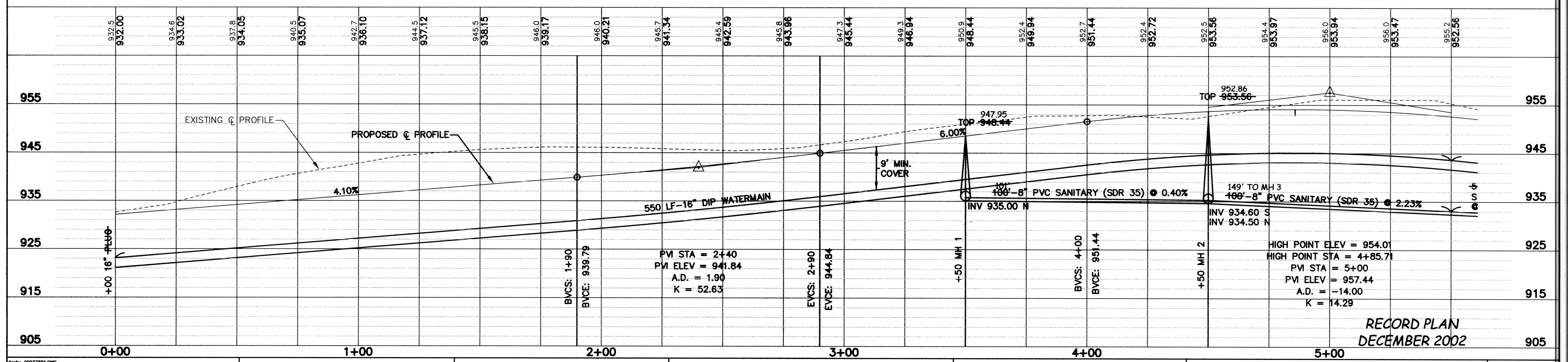
# JOHNSON STREET



**GENERAL NOTES:**  
 DENOTES SANITARY SEWER SERVICE INVERT ● PROPERTY LINE.  
 (XXX.X) DENOTES SANITARY SERVICE WYE LOCATED ON MAINLINE FROM DOWNSTREAM MH.  
 HYDRANTS TO BE PLACED 5' BEHIND BACK OF CURB.  
 SANITARY SEWER AND WATER SERVICES TO BE EXTENDED 10' PAST R.O.W. ON ALL LOTS.



SEE SHEET P2



RECORD PLAN  
DECEMBER 2002

DESIGNED BY: KT  
 DRAWN BY: EY/RM  
 APPROVED BY: \_\_\_\_\_  
 JOB NUMBER: 816050J  
 CAD DATE: February 01, 2003 9:06:48 a.m.  
 CAD FILE: 816050\dwg\XCS-BASE.DWG (JLALLEN)

I HEREBY CERTIFY THAT THIS PLAN, SPECIFICATION, OR REPORT WAS PREPARED BY ME OR UNDER MY DIRECT SUPERVISION AND THAT I AM A DULY LICENSED PROFESSIONAL ENGINEER UNDER THE LAWS OF THE STATE OF MINNESOTA.  
 SIGNATURE: \_\_\_\_\_ DATE: \_\_\_\_\_  
 PRINTED NAME: TERRY J. MAURER LIC. NO. 15316

NO.	DATE	BY	REVISION DESCRIPTION

ELK RIVER MUNICIPAL UTILITIES  
 EAGLE MARSH

SANITARY SEWER AND  
 WATERMAIN IMPROVEMENTS  
 STA. 0+00 TO 5+50

SHEET NO.  
**P1**