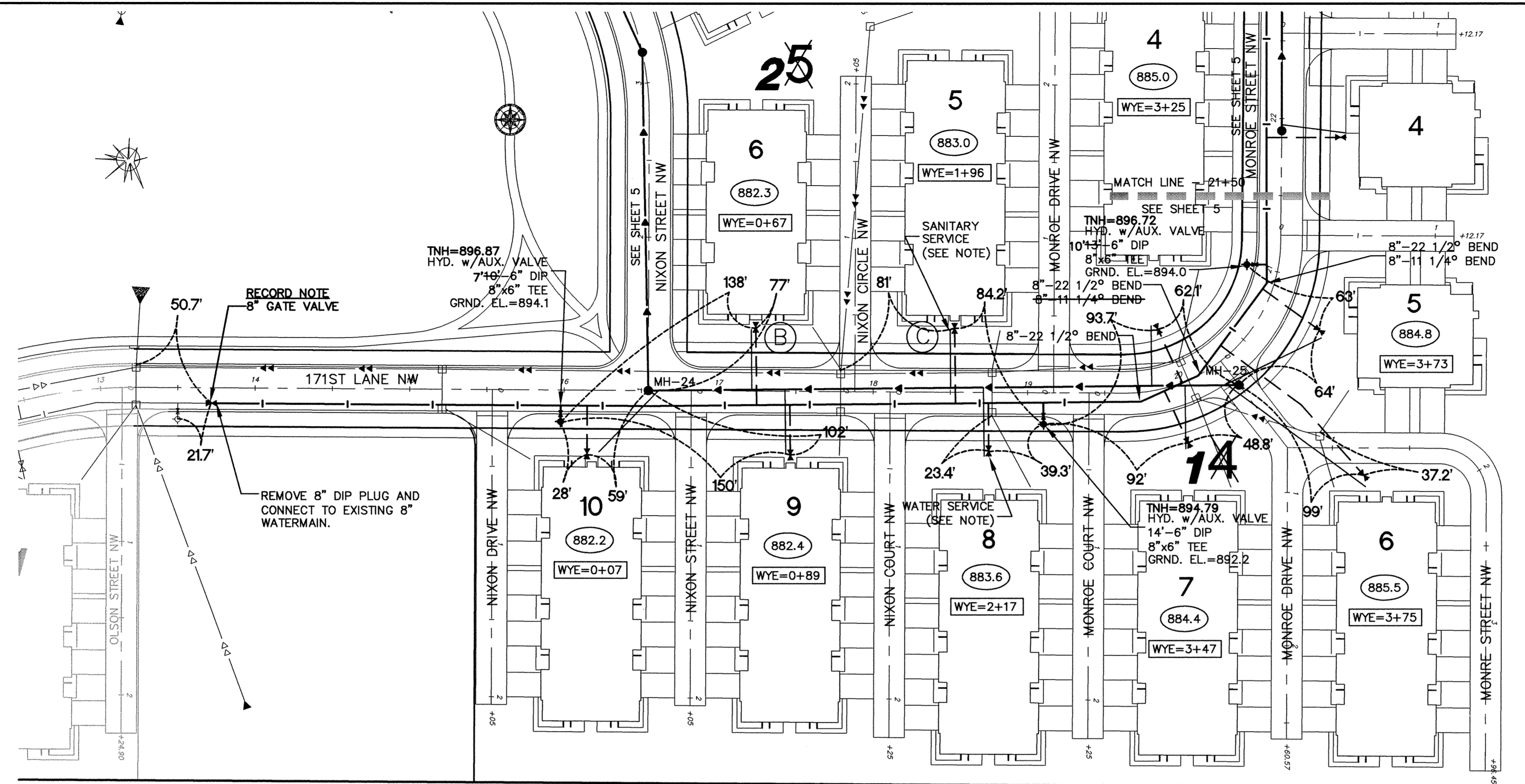


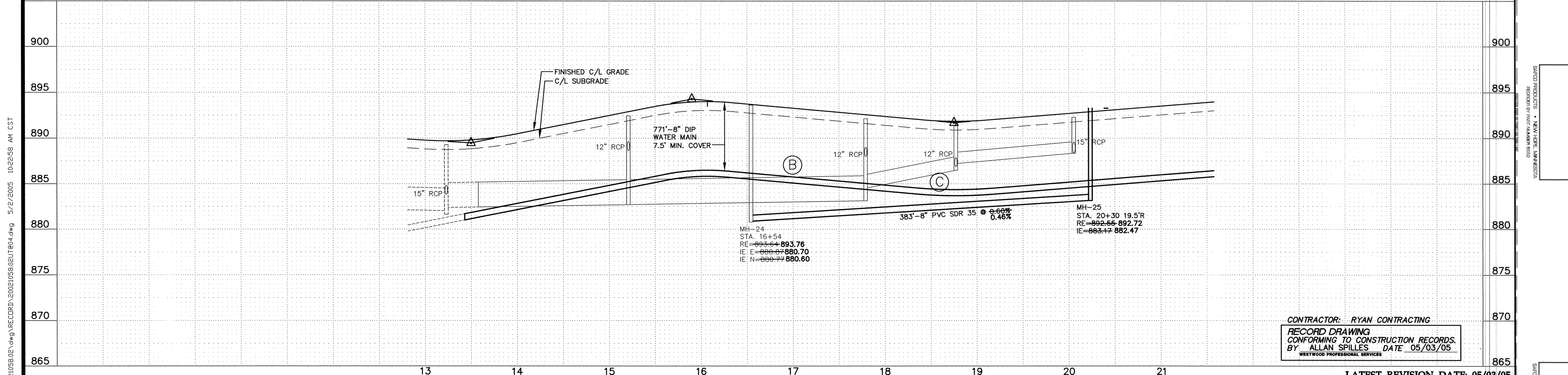
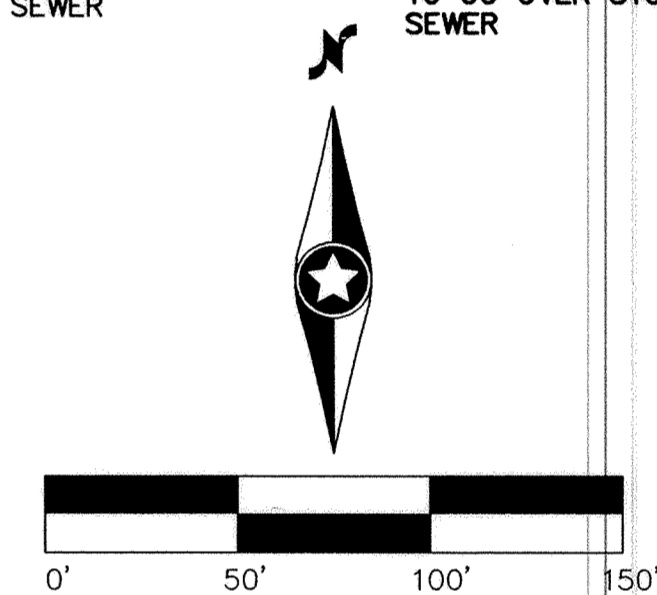
Call 48 Hours before digging:  
**GOPHER STATE ONE CALL**  
 Twin City Area 651-454-0002  
 Mn. Toll Free 1-800-252-1166

**GENERAL NOTES:**

- (XXX.X) DENOTES SANITARY SEWER SERVICE INVERT @ END OF FUTURE SERVICE STUB
- WYE=X+XX DENOTES SANITARY SEWER SERVICE WYE LOCATED ON MAINLINE FROM DOWN STREAM M.H.
- FLAG HYDRANTS.  
HYDRANTS TO BE PLACED 5' BEHIND BACK OF CURB.  
EXTEND RODS ON DEEP VALVES.
- ALL DROP MANHOLES WITH DROPS OVER 2' TO BE CONSTRUCTED USING OUTSIDE DROPS.
- SANITARY SERVICES SHALL BE 6" PVC (SDR26) PIPE. WATER SERVICES SHALL BE 4" DUCTILE IRON PIPE WITH 4" GATE VALVE PLACED 3' BEYOND PROPERTY LINE OR 10' BEHIND SIDEWALK OR PRIVATE STREET CURB WITH 8"x4" TEE AT THE MAIN, AND A 4" DIP PLUG WITH A THREADED 1 1/2" PLUG AT STUB.
- ALL MAIN LINE GATE VALVES TO BE LOCATED IN STREET BITUMINOUS
- (A) WATER SERVICES TO BE INSTALLED UNDER SANITARY SERVICE.
- (B) INSTALL WATER SERVICE OVER STORM SEWER
- (C) INSTALL WATER SERVICE UNDER STORM SEWER



171st Lane NW / Monroe Street NW (Sta. 13+50 to 21+50)



CONTRACTOR: RYAN CONTRACTING  
 RECORD DRAWING  
 CONFORMING TO CONSTRUCTION RECORDS.  
 BY: ALLAN SPILLES DATE 05/03/05  
 WESTWOOD PROFESSIONAL SERVICES

LATEST REVISION DATE: 05/03/05  
 E-8 20021058.02UT#04.DWG  
 Date: 12/01/03 Sheet: 6 OF 14

P:\20021058.02.dwg \RECORD\20021058.02UT#04.dwg 5/2/2005 10:22:58 AM CST

Prepared for: