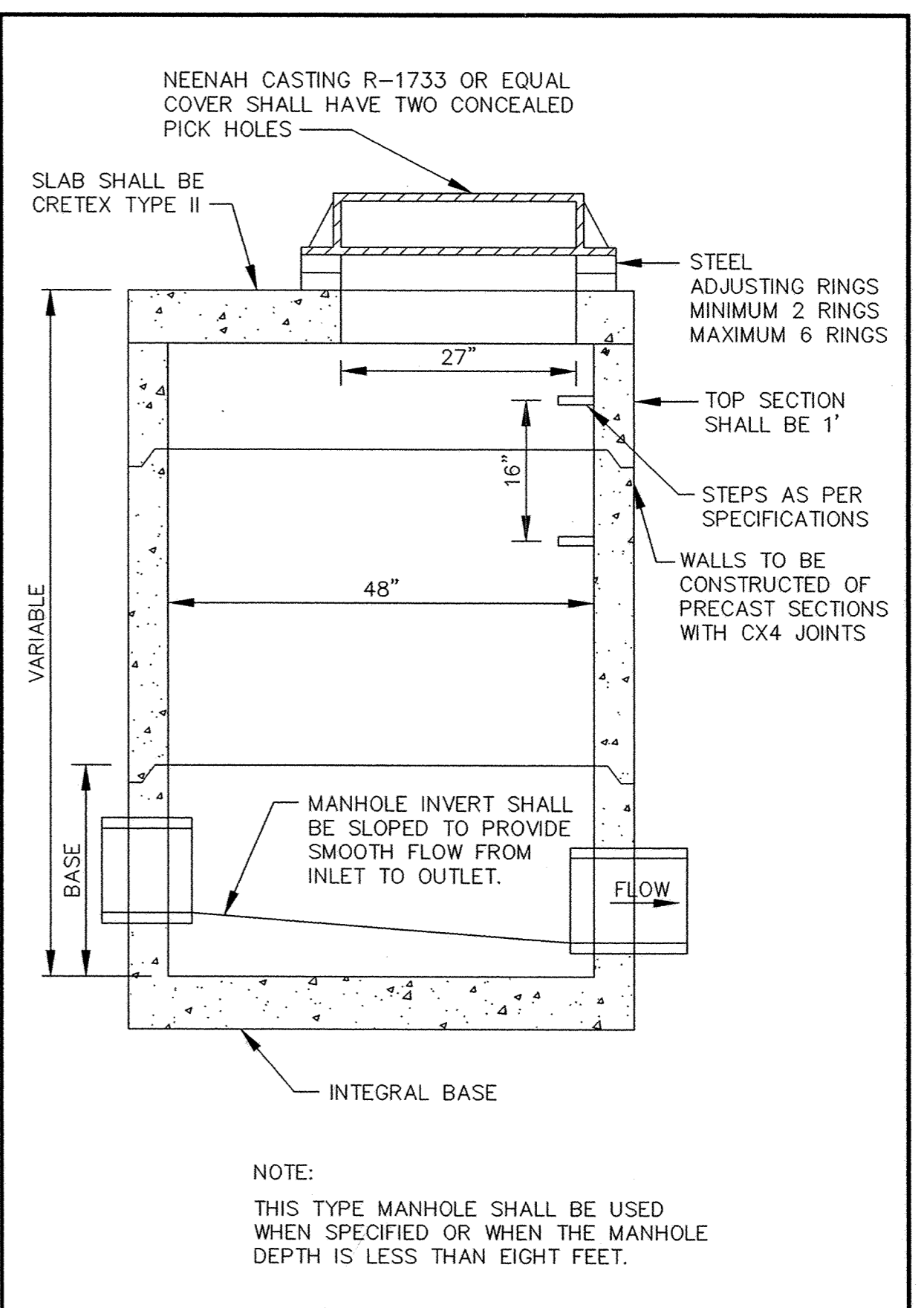
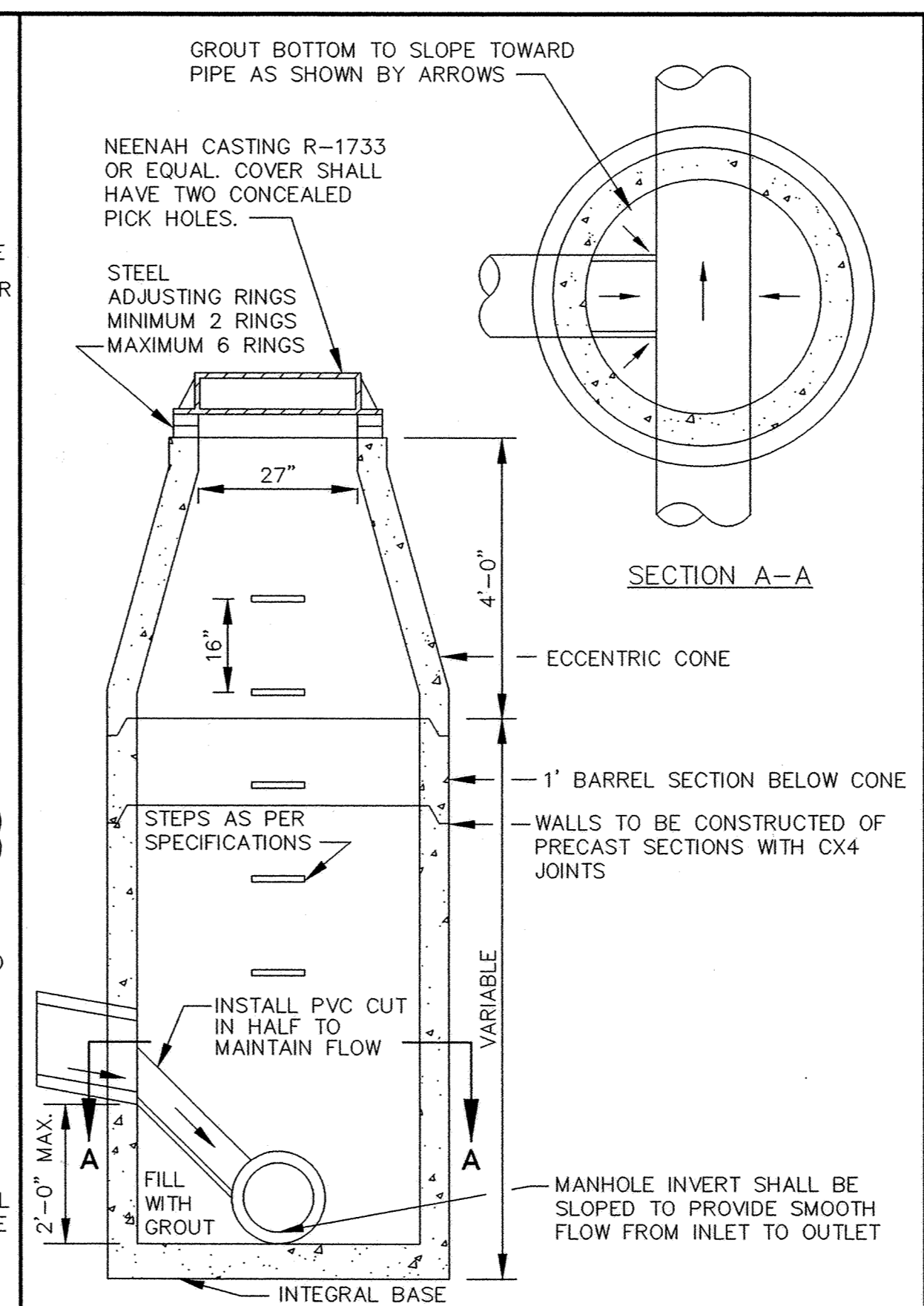


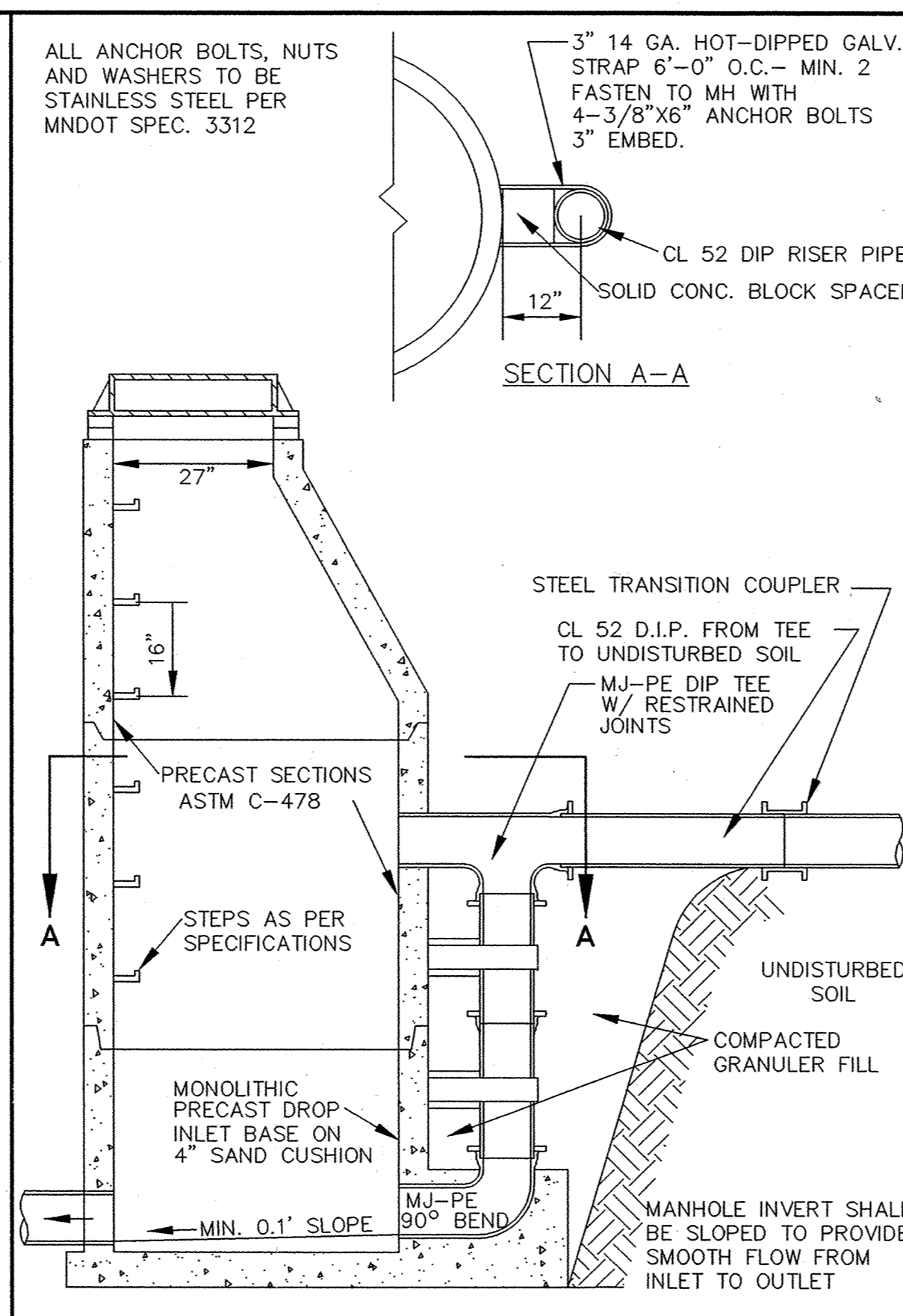
SANDO PRODUCTS • NEW HOPE, MINNESOTA  
REVISION BY PART NUMBER 6532  
MINIMUM DEPTH OF MANHOLE SHALL BE 8 FEET



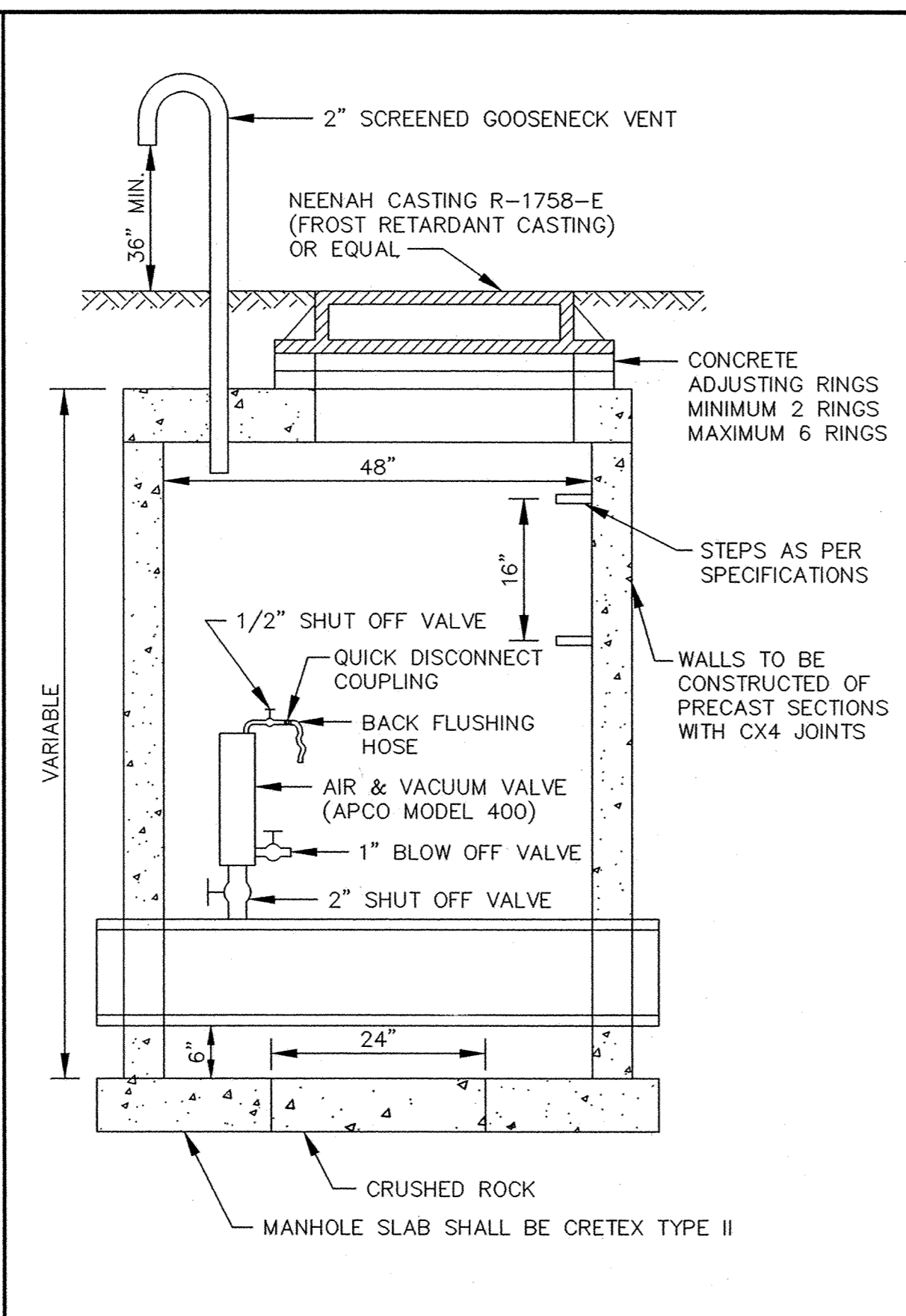
SLAB TOP MANHOLE



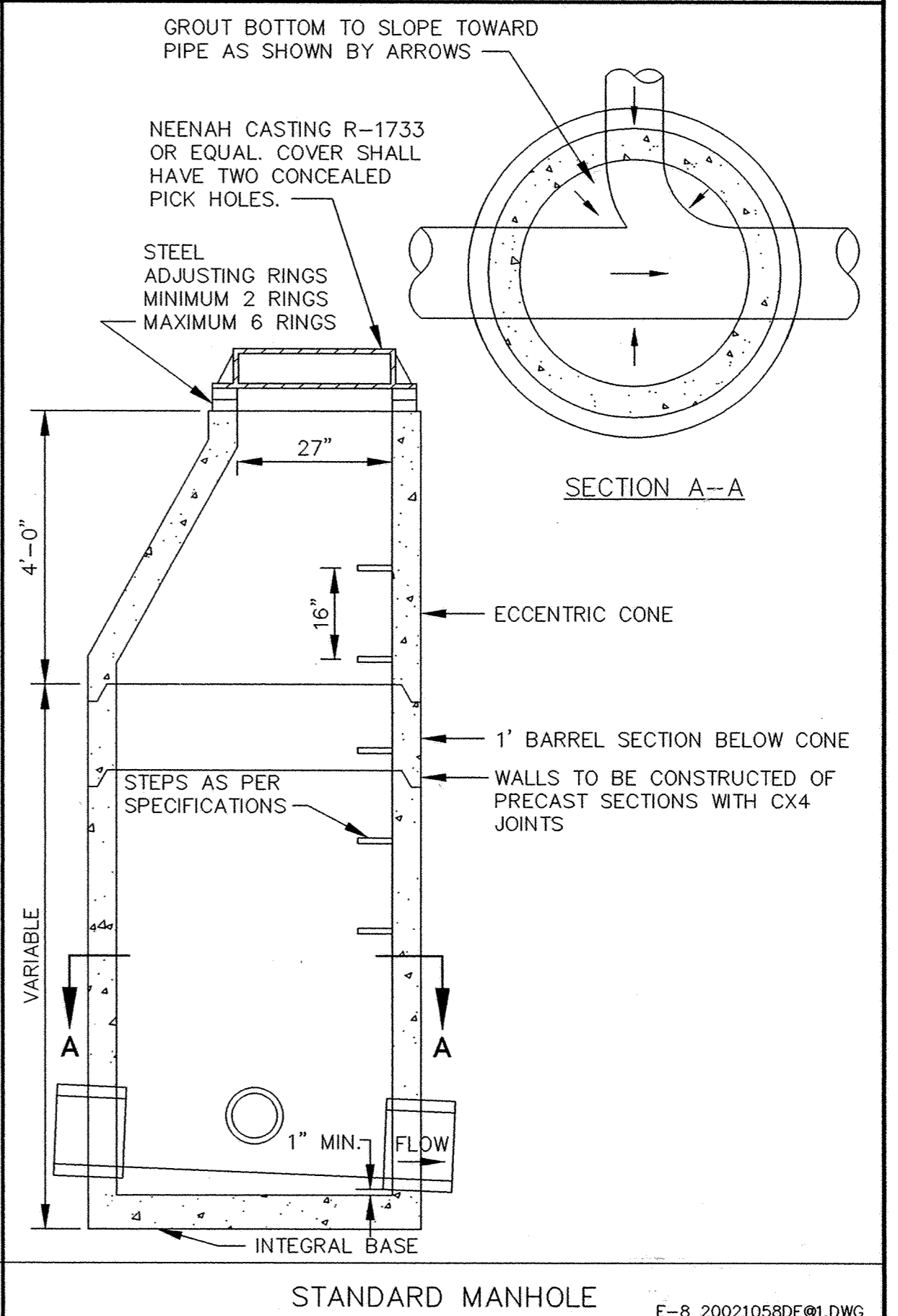
INSIDE DROP MANHOLE (TWO FEET OR LESS)



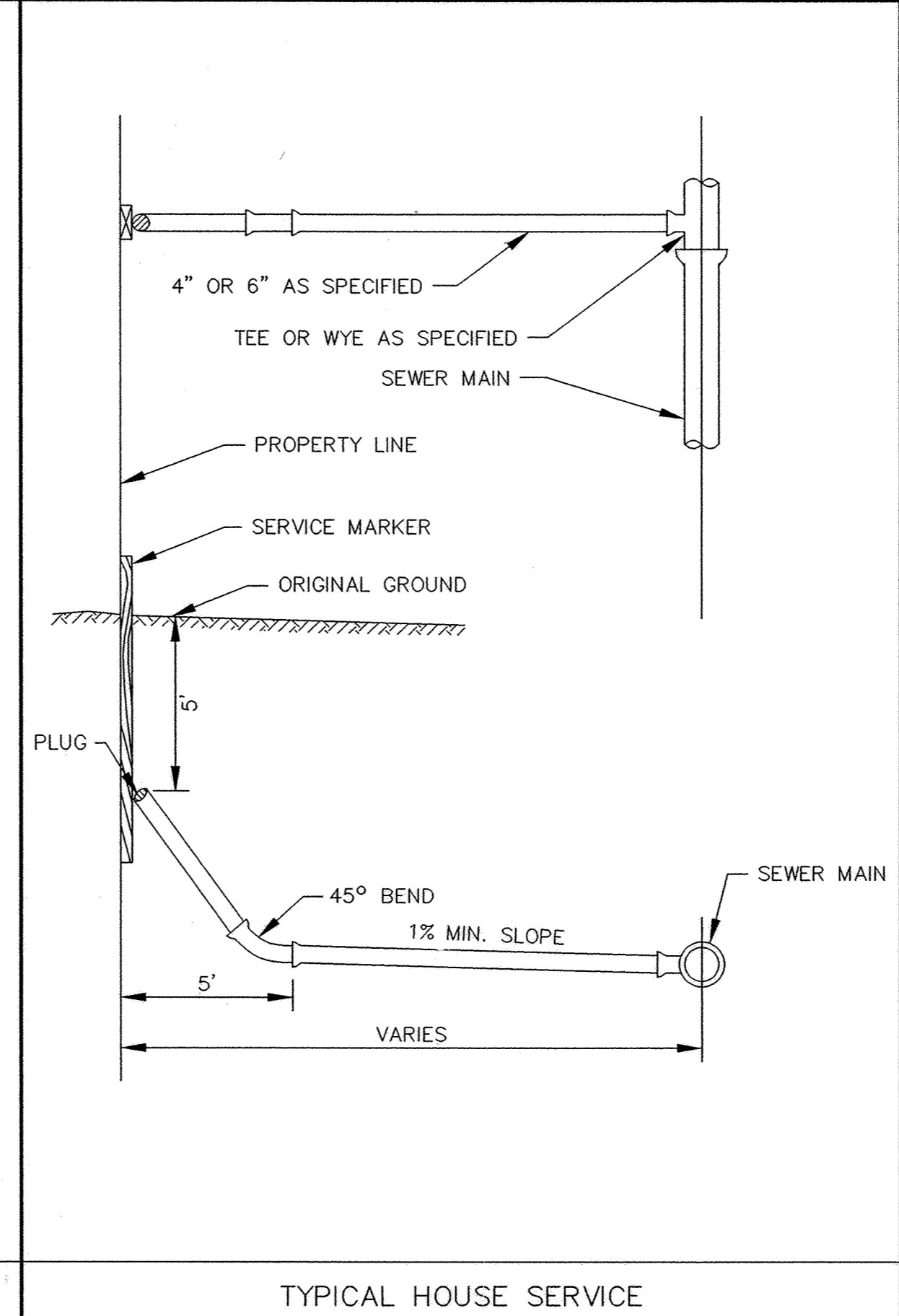
OUTSIDE DROP MANHOLE



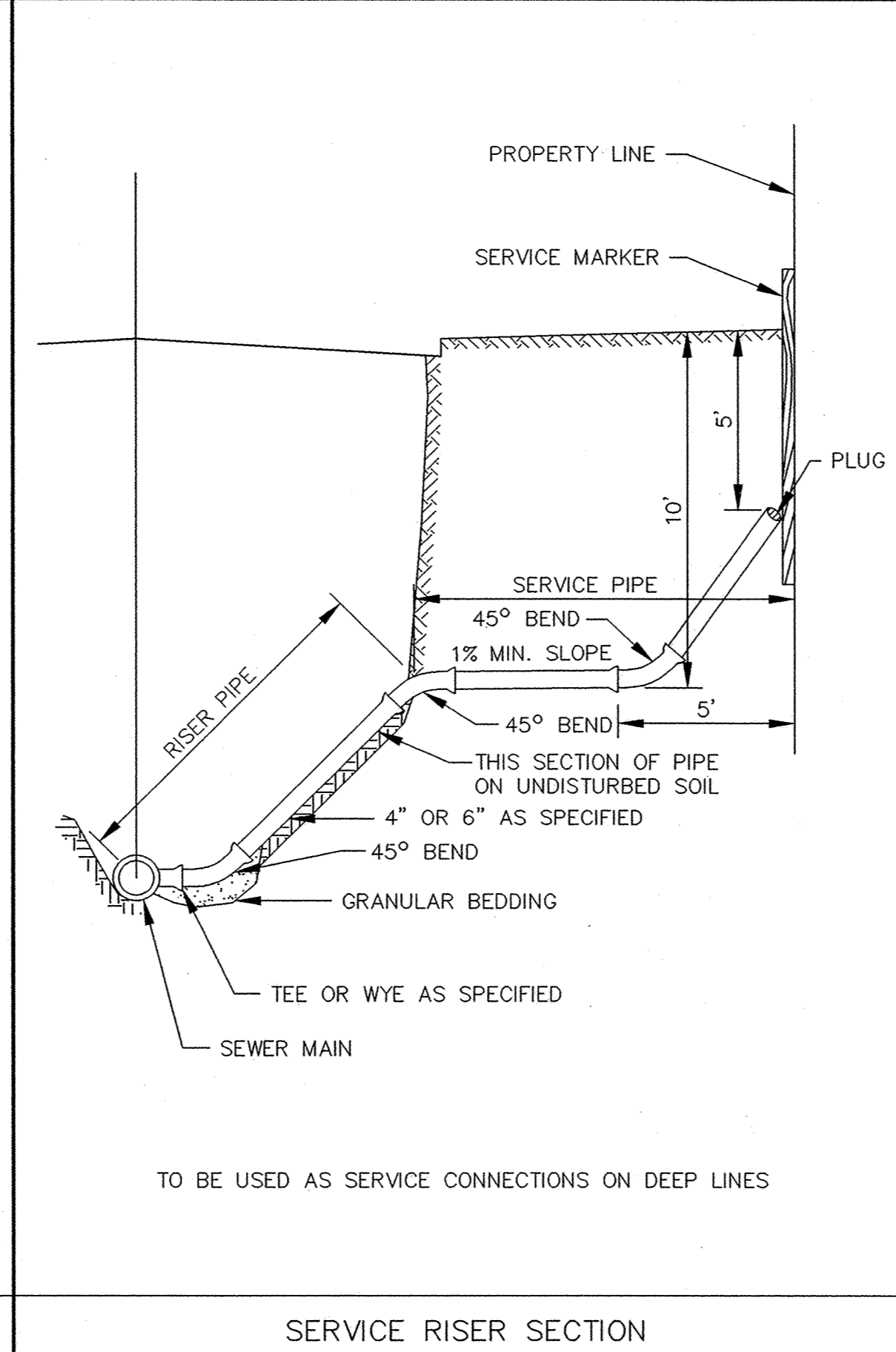
STANDARD AIR RELIEF MANHOLE



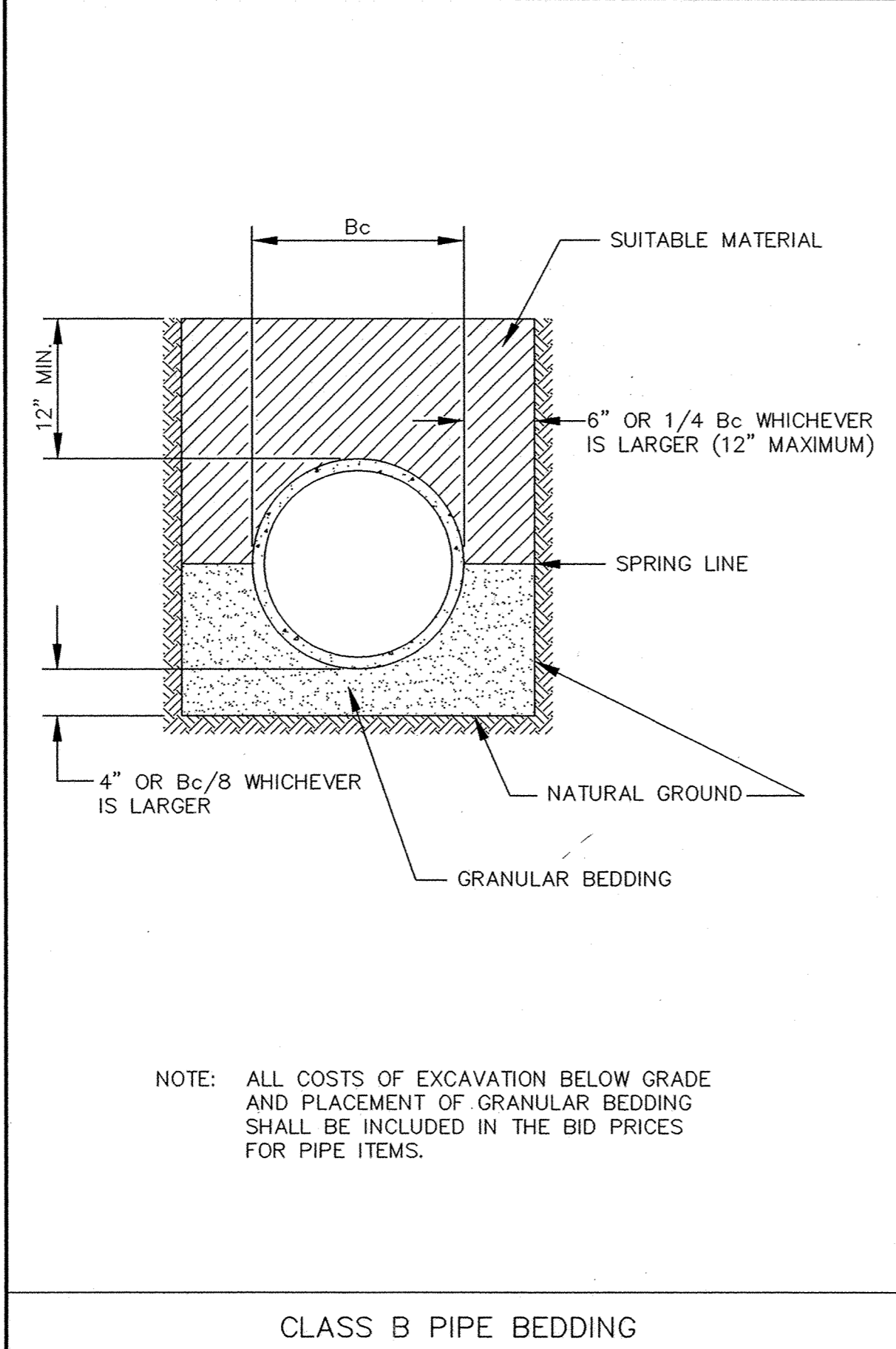
STANDARD MANHOLE



TYPICAL HOUSE SERVICE



SERVICE RISER SECTION



CLASS B PIPE BEDDING

**Westwood Professional Services, Inc.**  
 7599 Anagram Drive  
 Eden Prairie, MN 55344  
 Phone: 952/937-5150 Fax: 952/937-5822

**CENTEX HOMES**

CONTRACTOR: RYAN CONTRACTORS  
 RECORD DRAWING  
 CONFORMING TO CONSTRUCTION RECORDS.  
 BY AL SPILLES DATE 01/30/04  
 WESTWOOD PROFESSIONAL SERVICES, INC.

DESIGNED BY: \_\_\_\_\_ DRAWN BY: \_\_\_\_\_  
 APPROVED: \_\_\_\_\_ JOB NUMBER: \_\_\_\_\_  
 CAD DATE: April 14, 1999 11:14:59 a.m.  
 CAD FILE: 230000m\ER-SM.DWG

I HEREBY CERTIFY THAT THIS PLAN, SPECIFICATION, OR REPORT WAS PREPARED BY ME OR UNDER MY DIRECT SUPERVISION AND THAT I AM A DULY REGISTERED PROFESSIONAL ENGINEER UNDER THE LAWS OF THE STATE OF MINNESOTA.  
 DATE \_\_\_\_\_ REG. NO. \_\_\_\_\_

NO.	DATE	BY	REVISION DESCRIPTION
1	01/30/04	AS	RECORD DRAWING

1326 ENERGY PARK DRIVE  
 ST. PAUL, MINNESOTA 55108  
 (612) 644-4389  
**Howard R. Green Company**  
 CONSULTING ENGINEERS

CITY OF ELK RIVER  
 ELK RIVER STATION - PHASE I  
 SANITARY SEWER DETAILS

SHEET NO.  
 13  
 OF  
 16