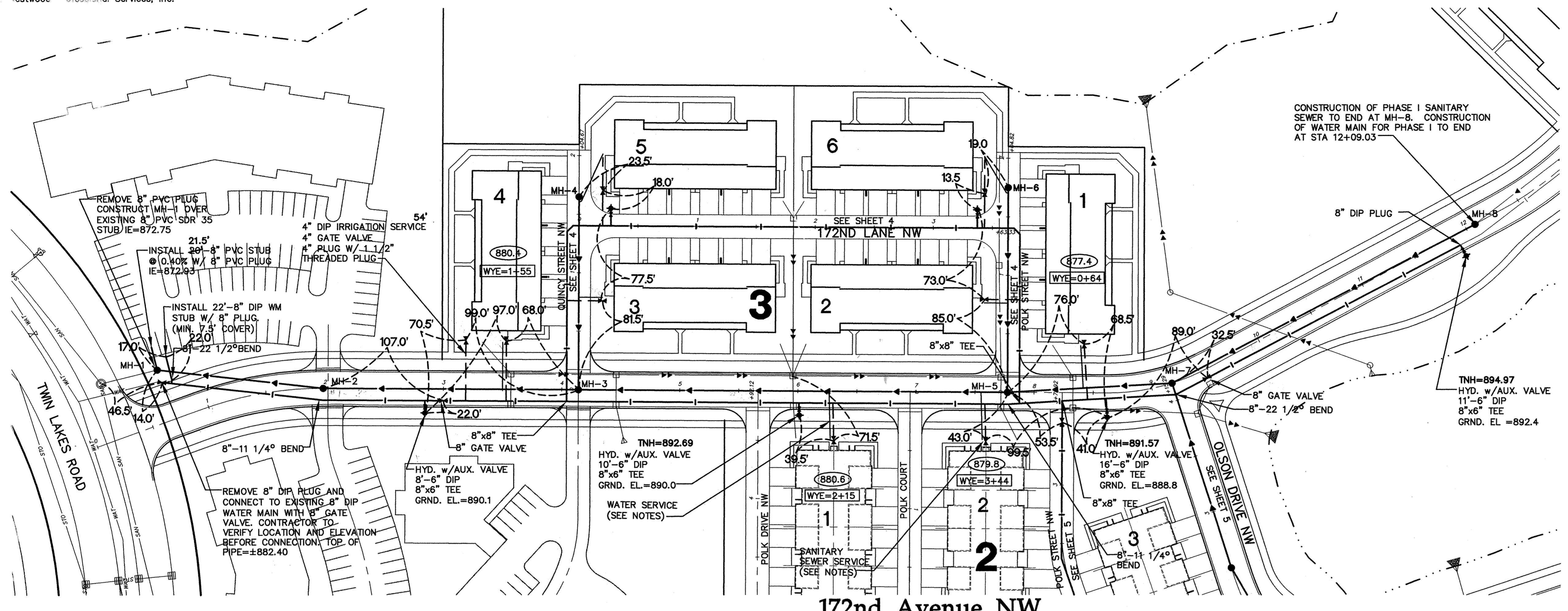


Call 48 Hours before digging:
GOPHER STATE ONE CALL
 Twin City Area 651-454-0002
 Mn. Toll Free 1-800-252-1166

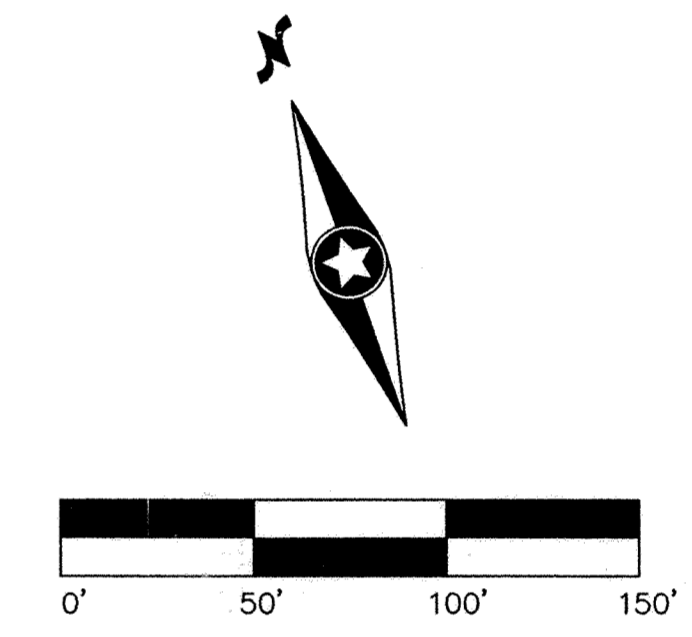
GENERAL NOTES:

- (XXX.X) DENOTES SANITARY SEWER SERVICE INVERT @ END OF FUTURE SERVICE STUB
- WYE=X+XX DENOTES SANITARY SEWER SERVICE WYE LOCATED ON MAINLINE FROM DOWN STREAM M.H.
- FLAG HYDRANTS.
- HYDRANTS TO BE PLACED 5' BEHIND BACK OF CURB.
- EXTEND RODS ON DEEP VALVES.
- ALL DROP MANHOLES WITH DROPS OVER 2' TO BE CONSTRUCTED USING OUTSIDE DROPS.
- SANITARY SEWER & WATER SERVICES TO BE EXTENDED 10' PAST BOC ON ALL LOTS
- SANITARY SERVICES SHALL BE 6" PVC (SDR26) PIPE. WATER SERVICES SHALL BE 4" DUCTILE IRON PIPE WITH 4" GATE VALVE PLACED 3' BEYOND PROPERTY LINE OR 10' BEHIND SIDEWALK WITH 8"x4" TEE AT THE MAIN, AND A 4" DIP PLUG WITH A THREADED 1 1/2" PLUG AT STUB.
- ALL MAIN LINE GATE VALVES TO BE LOCATED IN STREET BITUMINOUS

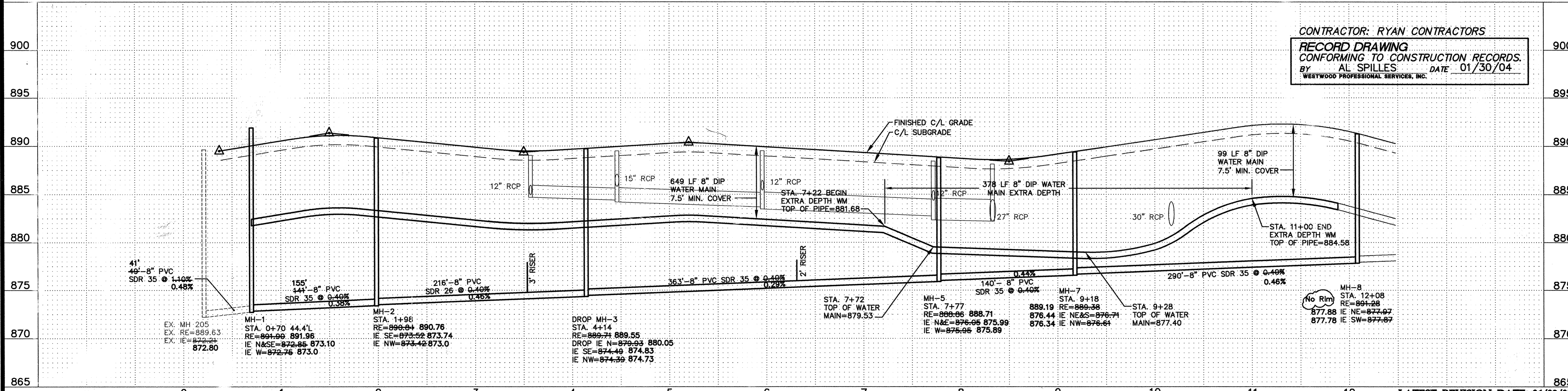


CONSTRUCTION OF PHASE I SANITARY SEWER TO END AT MH-8. CONSTRUCTION OF WATER MAIN FOR PHASE I TO END AT STA 12+09.03

TNH=894.97
 HYD. w/AUX. VALVE
 11'-6" DIP
 8"x6" TEE
 GRND. EL.=892.4



172nd Avenue NW



CONTRACTOR: RYAN CONTRACTORS
RECORD DRAWING
 CONFORMING TO CONSTRUCTION RECORDS.
 BY AL SPILLES DATE 01/30/04
 WESTWOOD PROFESSIONAL SERVICES, INC.

LATEST REVISION DATE: 06/09/03
 E-8 20021058UT001.DWG
 Date: 03/21/03 Sheet: 3 OF 16

Westwood Professional Services, Inc.
 7599 Anagram Drive
 Eden Prairie, MN 55344
 Phone: 952/937-5150 Fax: 952/937-5822

I hereby certify that this plan was prepared by me or under my direct supervision and that I am a duly licensed PROFESSIONAL ENGINEER under the laws of the State of Minnesota.
 Jason M. McCarty
 Date: 01/30/04 License No. 41955

Revisions:
 04/02/03 General Comments - CLJ
 05/05/03 City Review - CLJ
 05/29/03 City Review - CLJ
 06/24/03 Irrigation Service Revisions - CLJ
 06/09/03 Dronitile Stubs - CLJ
 01/30/04 RECORD DRAWING (AS)

Designed: JMM
 Checked: JMM
 Drawn: WH
 Record Drawing by/date: AS 01/30/04

Prepared for:
CENTEX HOMES
 12400 Whitewater Drive, Suite #120
 Minnetonka, Minnesota 55343

Elk River Station Phase I
 Sanitary Sewer and Water Main Construction Plans
 172nd Avenue NW Sta. 0+00 to Sta. 9+50

SAPIO PRODUCTS • NEW HOPKINS, MINNESOTA
 REPRODUCED BY PART NUMBER 6522
 SAPIO PRODUCTS • NEW HOPKINS, MINNESOTA
 REPRODUCED BY PART NUMBER 6522
 SAPIO PRODUCTS • NEW HOPKINS, MINNESOTA
 REPRODUCED BY PART NUMBER 6522
 SAPIO PRODUCTS • NEW HOPKINS, MINNESOTA
 REPRODUCED BY PART NUMBER 6522