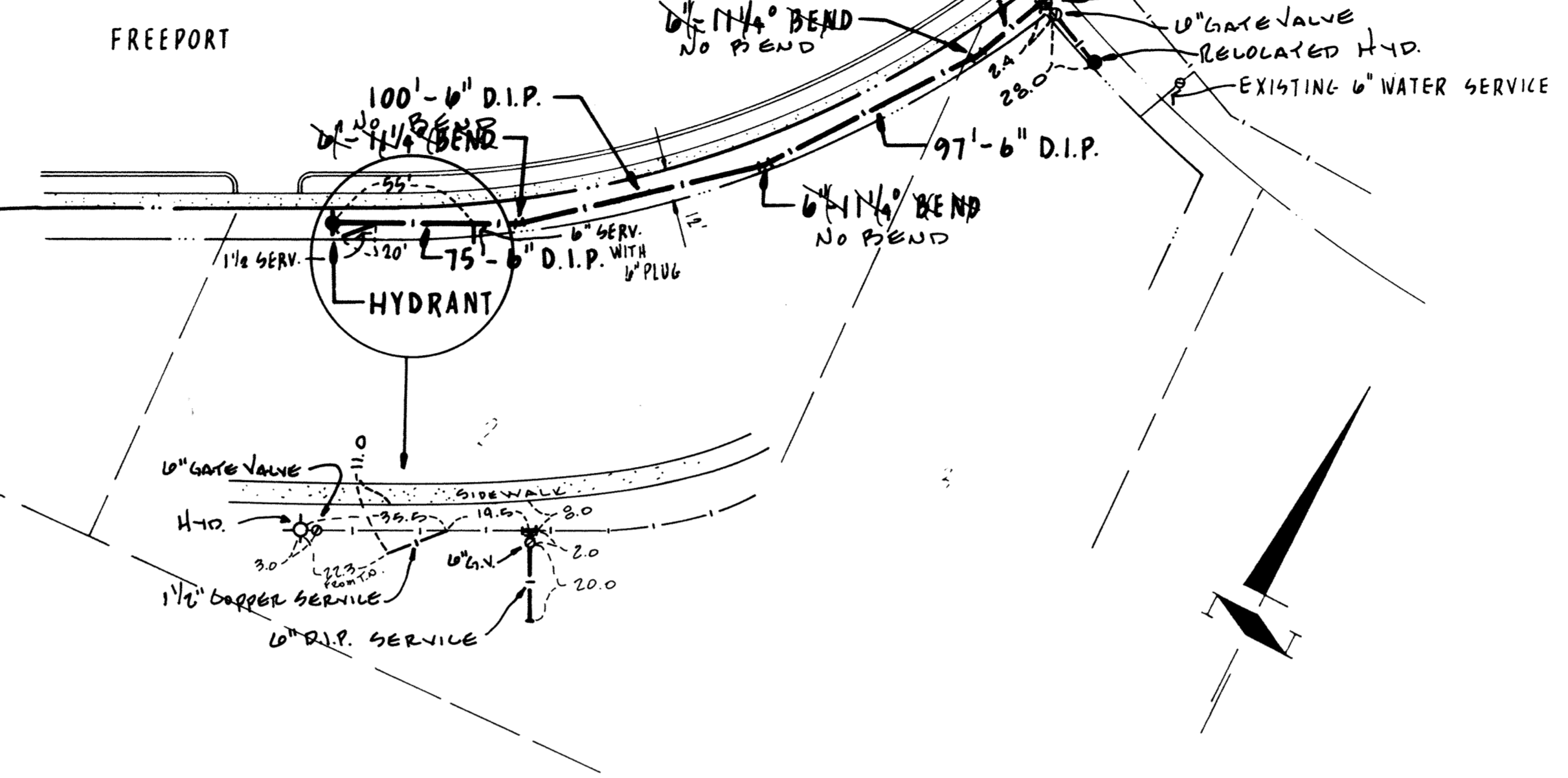


Use for Watermain, Sanitary Sewer and Storm Sewer where applicable

RELOCATE HYDRANT SHALL INCLUDE THE FOLLOWING

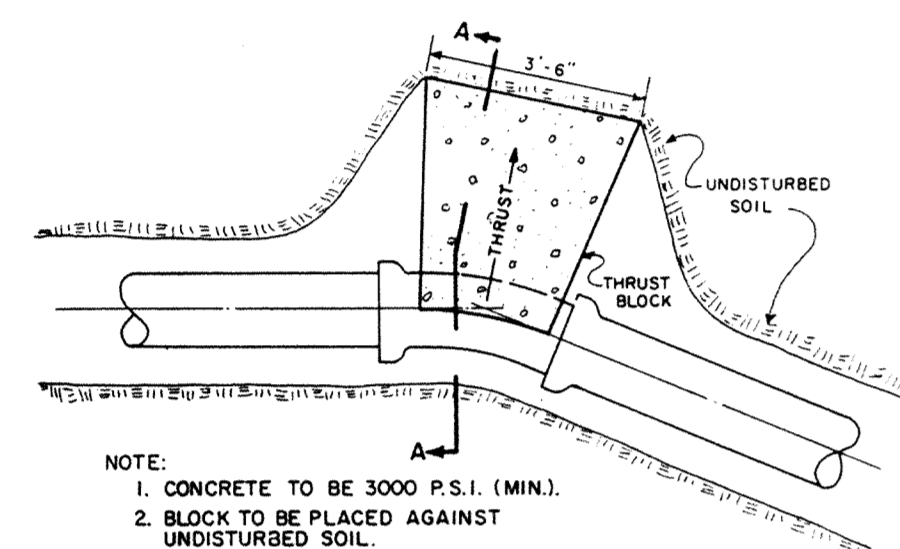
REMOVE HYDRANT  
INSTALL 6" x 6" x 6" TEE @ 5'-6" D.I.P.  
REPLACE HYDRANT



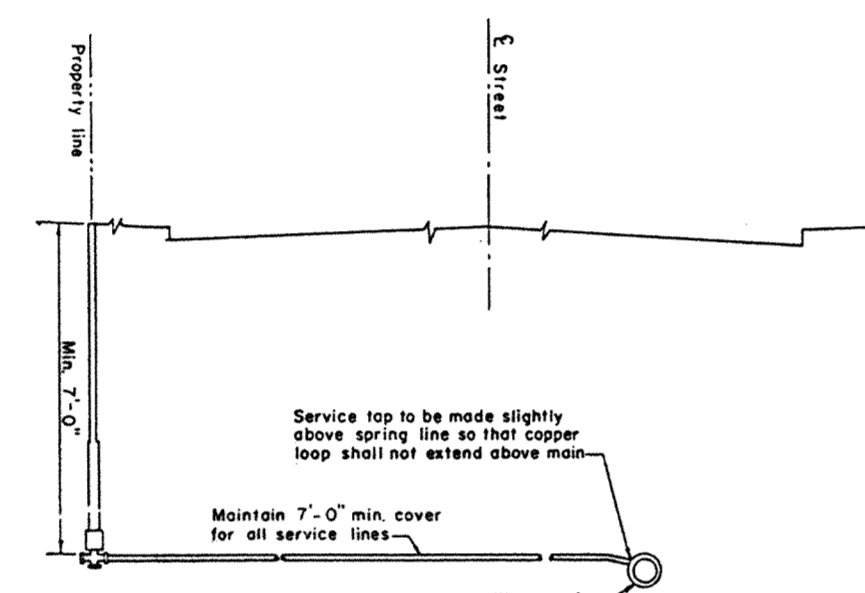
- Const. Notes:
- The Contractor shall take care and not damage the existing concrete sidewalk. Should the sidewalk be damaged during the construction of the watermain, it shall be repaired at the Contractor's expense.

1.003  
HYDRANT INSTALLATION

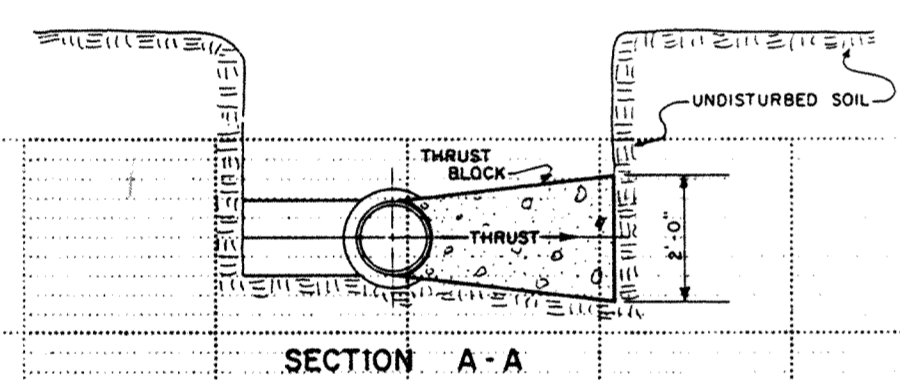
1.009  
CLASS "C" PIPE BEDDING



- NOTE:
- CONCRETE TO BE 3000 P.S.I. (MIN).
  - BLOCK TO BE PLACED AGAINST UNDISTURBED SOIL.
  - DO NOT POUR CONCRETE OVER JOINTS.
  - THIS BLOCKING TO BE USED ON ALL TEES, BENDS, PLUGS & HYDRANTS.

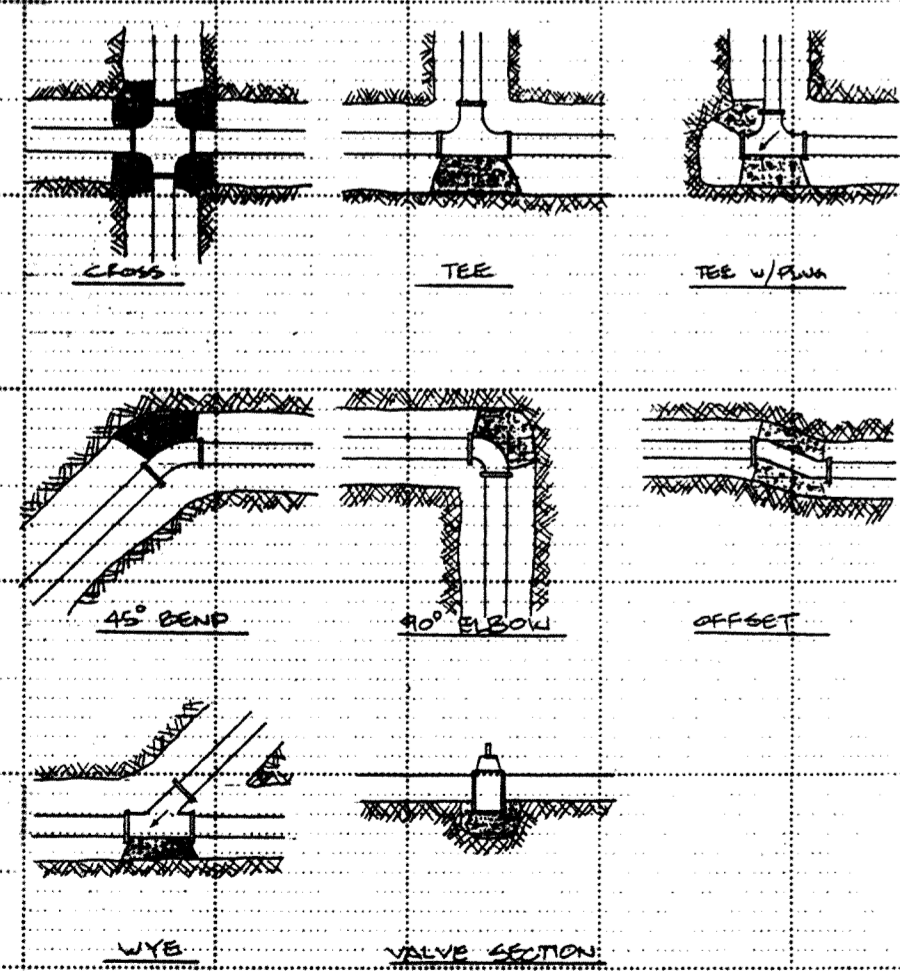


1.010  
HOUSE WATER SERVICE LATERAL



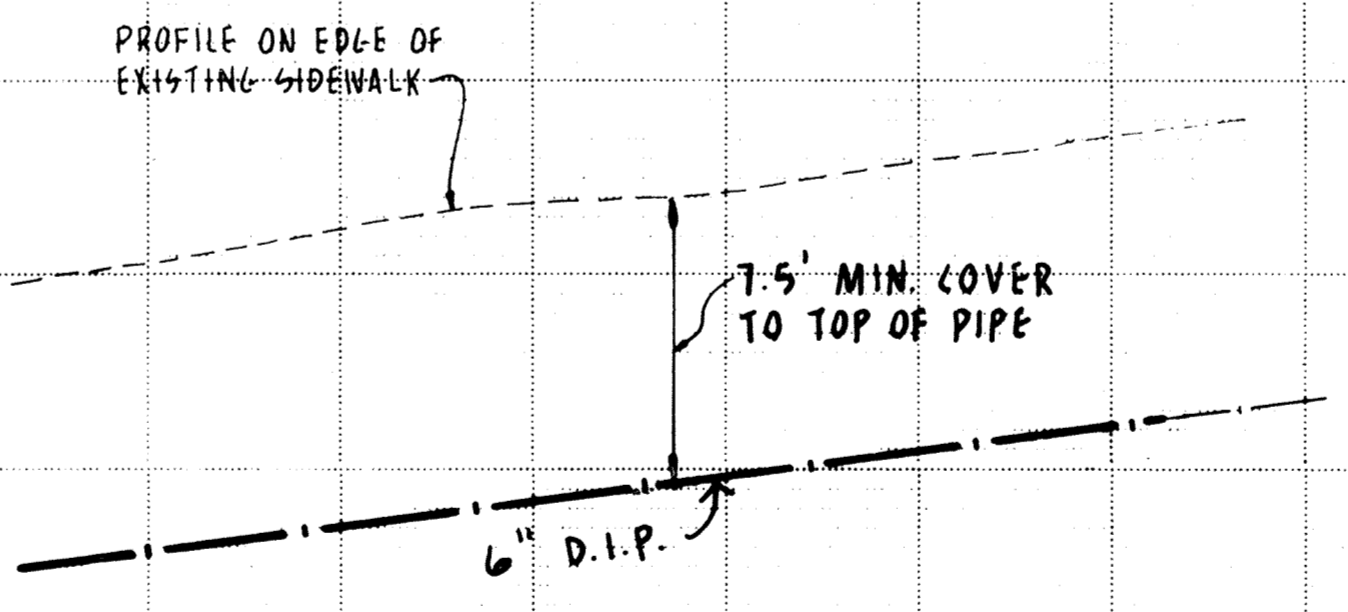
SECTION A-A

1.005  
THRUST BLOCK DETAIL



NOTE:  
CONCRETE BLOCKING SHALL CONSIST OF 1.5 CUBIC FOOT OF CONCRETE FOR ALL FITTINGS FOR 2" AND SMALLER LINES. LARGER LINES SHALL HAVE 2 CUBIC FOOT MINIMUM BLOCKING.

1.005A  
CONCRETE THRUST BLOCKING DETAILS  
No Scale



RECORD DRAWINGS

I hereby certify that this plan, specification or report was prepared by me or under my direct supervision and that I am a duly Registered Professional Engineer under the laws of the State of Minnesota.		<b>MEYER-ROHLIN, INC.</b> ENGINEERS-LAND SURVEYORS 3111 Hwy. 25N., Buffalo, Minn. 55313		REVISIONS: Approved by: Date: 9-30-87 Reg. No. 6218		<b>WATERMAIN EXTENSION</b> <b>Elk River Plaza Third Addition</b> <b>ELK RIVER, MN</b>		Sheet 1 of 1 Sheets	
Date: 9-30-87	Designed by: G.P.P.	Drawn by: G.A.G.	Checked by: J.P.M.	Scale: 1"=40'	Sheet: 127	Page: 48	File No: 158351		

State Proj. No. Sheet No. of Sheets