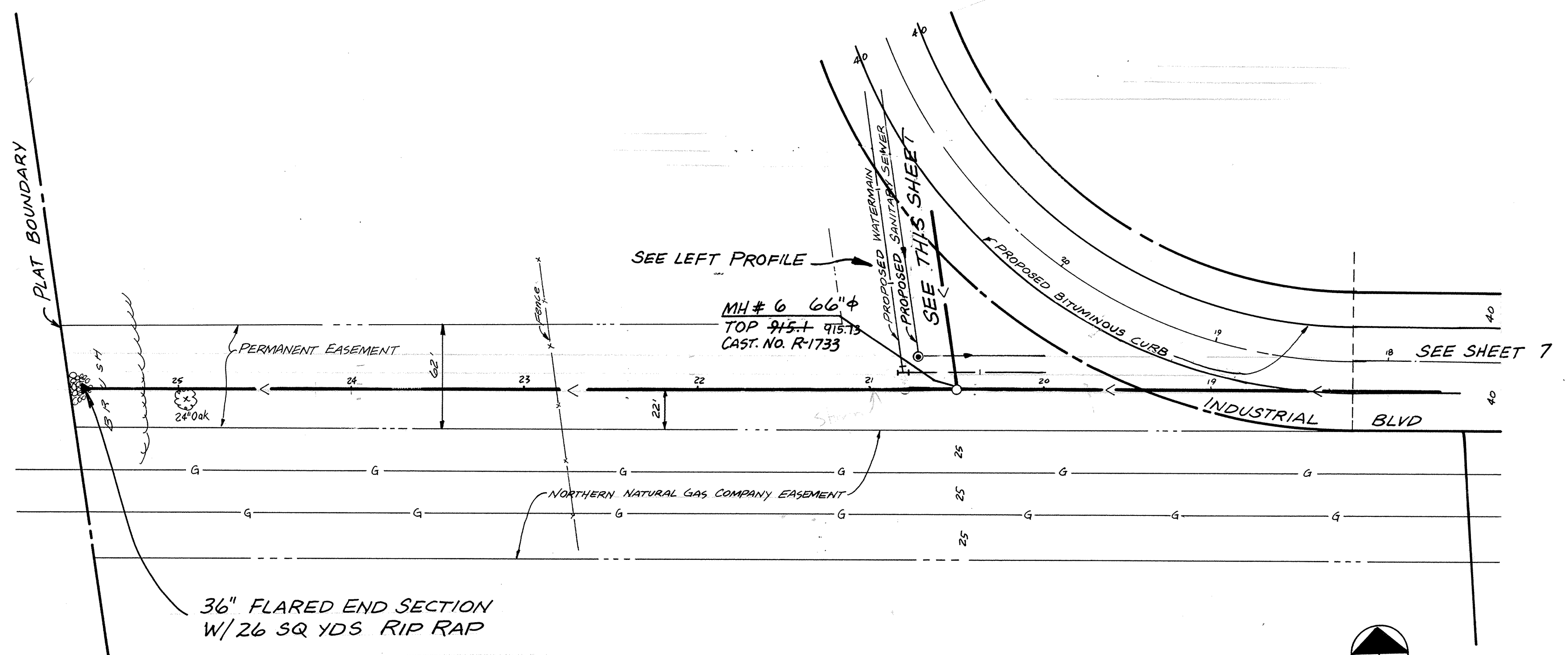
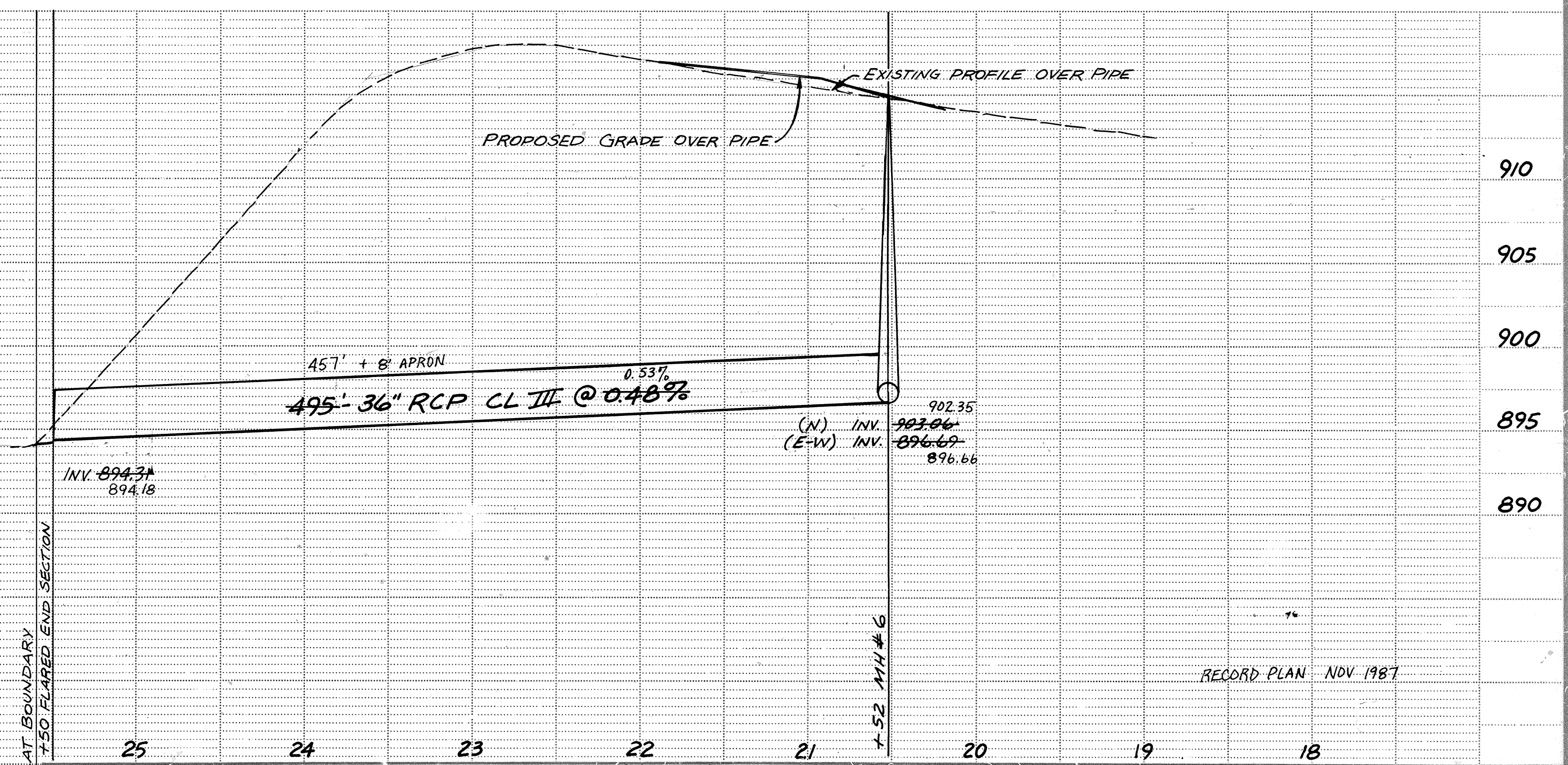
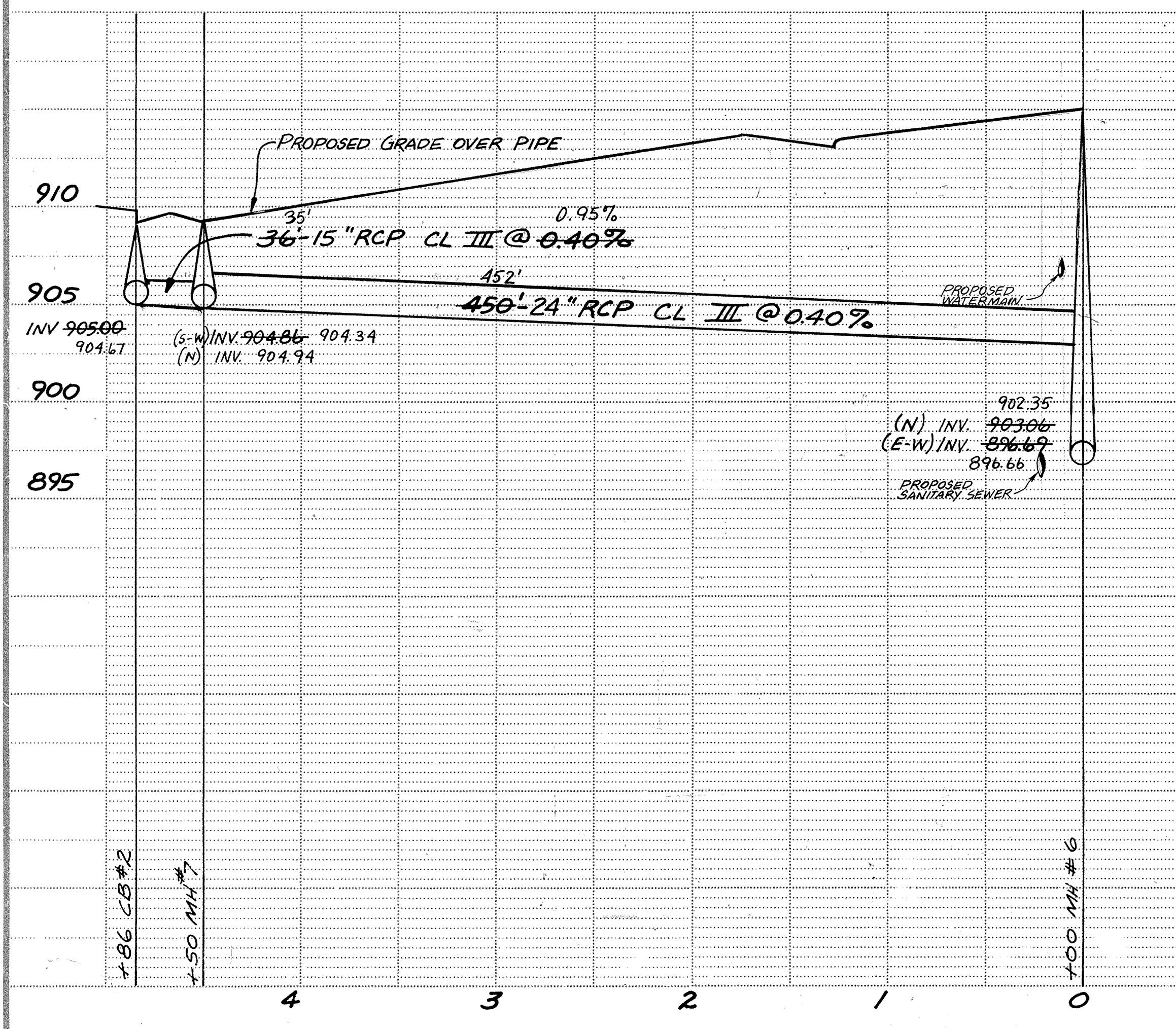


NOTE: INSTALL 5'-12" RCP CL III BETWEEN DOUBLE INLETS



36" FLARED END SECTION W/ 26 SQ YDS RIP RAP



**MSA** CONSULTING ENGINEERS  
**Maier Stewart & Associates Inc.**  
 48C CEDAR STREET (612)227-9475 ST. PAUL, MINNESOTA 55101

DATE	DESCRIPTION	DESIGNED
2/24/87	Add CB's #7 and #8	CHECKED
		DRAWN MRJ

GRAPHIC SCALE  
 0 HORIZ. 50  
 0 VERT. 5

**CITY OF ELK RIVER**  
**STORM SEWER**  
**SAP 204-125-01**  
**INDUSTRIAL BLVD TO PLAT BOUNDARY**

DATE JAN 1987 SHEET 8 OF 17 SHEETS PROJECT NO. 230-002