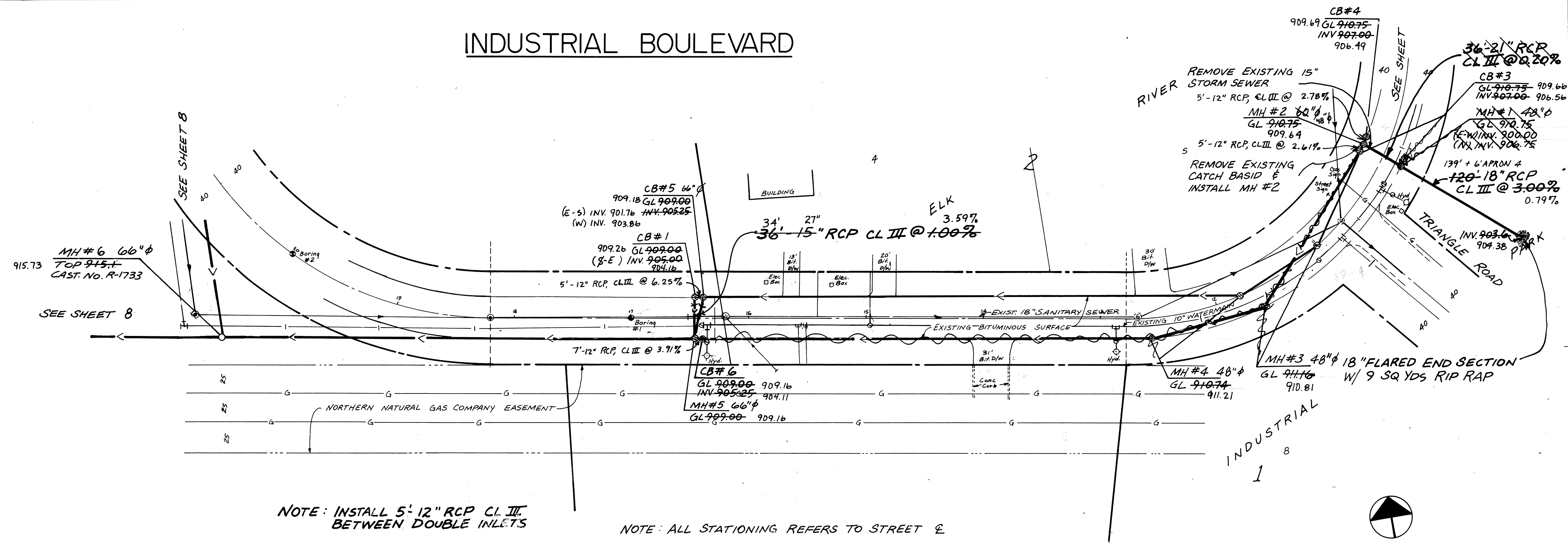
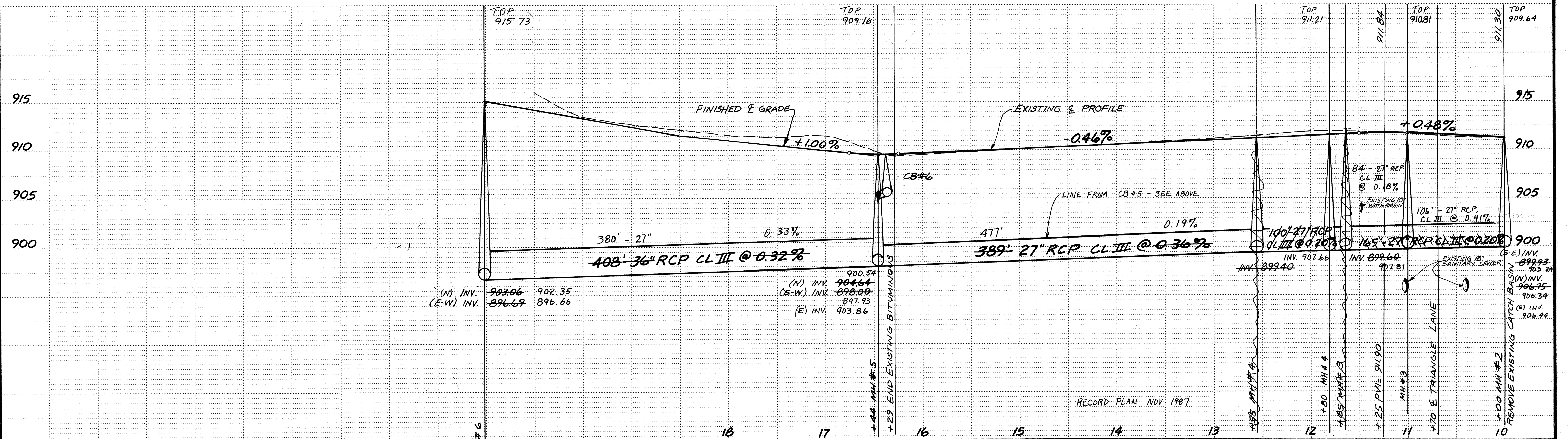


INDUSTRIAL BOULEVARD



NOTE: INSTALL 5'-12" RCP CL III BETWEEN DOUBLE INLETS

NOTE: ALL STATIONING REFERS TO STREET E



	CONSULTING ENGINEERS	DESIGNED	
	Maier Stewart & Associates Inc.	CHECKED	
480 CEDAR STREET	(612)227-9475	ST. PAUL, MINNESOTA 55101	
DATE	DESCRIPTION	DESIGNED	
2/24/87	add CB's #3 thru #6	CHECKED	
REVISIONS		DRAWN	MRJ
		GRAPHIC SCALE	
		0 HORIZ. 50'	
		0 VERT. 5'	
		CITY OF ELK RIVER STORM SEWER SAP 204-125-01 INDUSTRIAL BOULEVARD	
480 CEDAR STREET (612)227-9475 ST. PAUL, MINNESOTA 55101		DATE	JAN 1987
		SHEET	7 OF 17 SHEETS
		PROJECT NO.	230-002

DRAWING NUMBER
 ERIND 87
 7
 DRAWING NUMBER
 189