

CITY OF ELK RIVER  
SECTIONS 28 & 29, T33N, R26W  
SANITARY SEWER, WATERMAIN,  
STORM DRAINAGE & STREET CONSTRUCTION  
INDUSTRIAL BOULEVARD

M.S.A.S. 204-125-01

BETWEEN	1,000' SO. OF C.S.A.H. NO. 1	AND	C.S.A.H. NO. 1, 0.41 MI. NW
GROSS LENGTH	2153.82	FEET	0.41 MILES
BRIDGES LENGTH	0	FEET	0 MILES
EXCEPTION LENGTH	0	FEET	0 MILES
NET LENGTH	2153.82	FEET	0.41 MILES

PLAN 1" = 50'

SCALES: PROFILE HOR. 1" = 50'  
VERT. 1" = 5'

CROSS SECTIONS HOR. 1" = 10'  
VERT. 1" = 5'

PLAN SYMBOLS

SECTION LINE	---
QUARTER LINE	- - - -
SIXTEENTH LINE	- - - - -
RIGHT OF WAY LINE	=====
PROPERTY LINE	=====
CENTER LINE	-----
FENCE LINE	- x - x -
RIVER OR CREEK	~~~~~
LAKE OR POND	~~~~~
CULVERT	-----
BRIDGE	-----
RETAINING WALL	=====

TREES	
BRUSH OR SHRUBS	
HEDGE	
CONIFERS	
SWAMP	
MAILBOX	
SIGN	

UTILITIES SYMBOLS

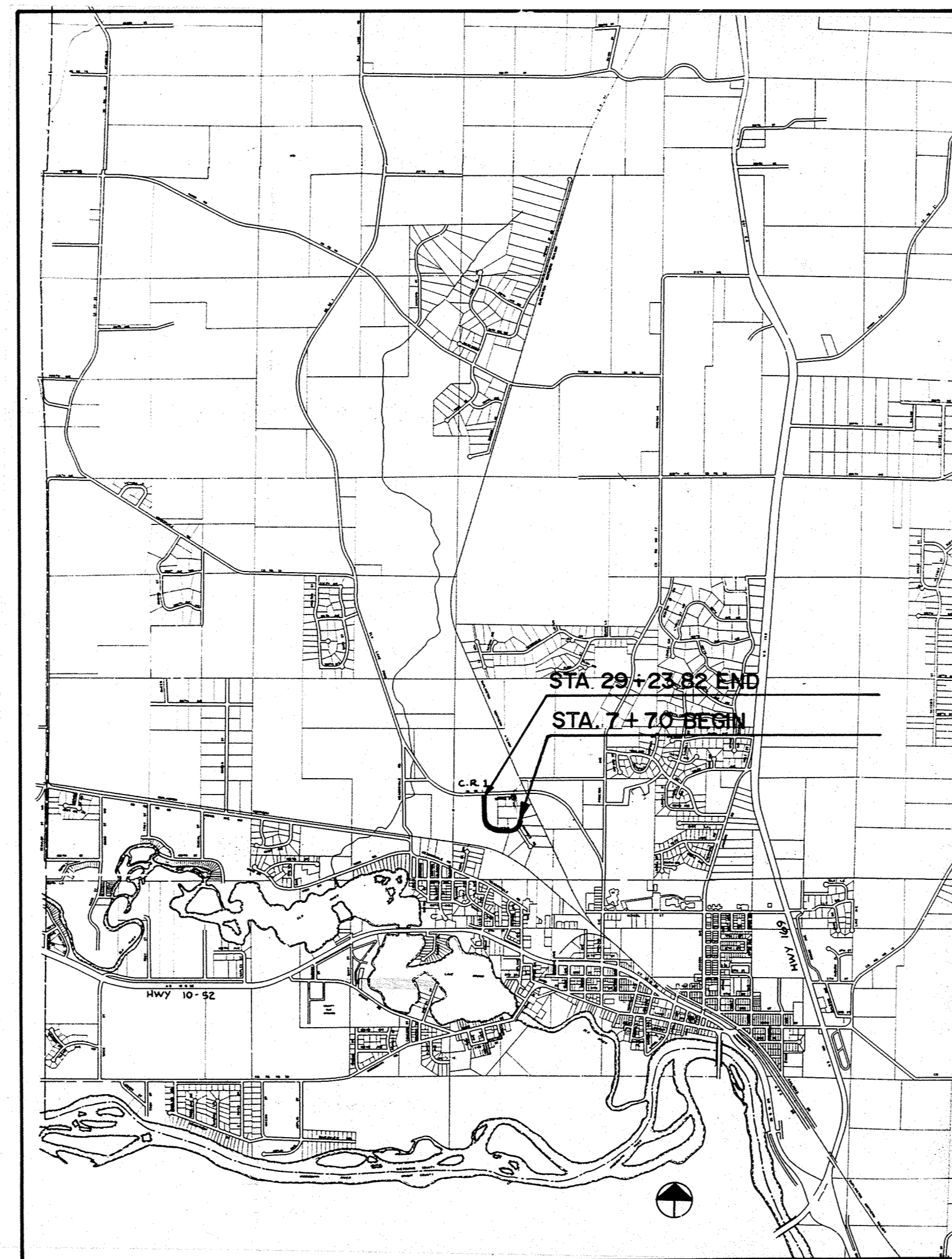
SANITARY SEWER	
STORM SEWER	
WATERMAIN	
GAS LINE	
POWER LINE	
MANHOLE	
CATCH BASIN	
VALVE	

HYDRANT	
POWER, TELEPHONE, OR LIGHT POLE	
ANCHOR	
SOIL BORING LOCATION	

ADT CURRENT YEAR	-0- (NON EXISTING)
ADT FUTURE YEAR	2000 (PROJECTED)
HCA DT	150 - 300
DESIGN SPEED	30 MPH
LOCALLY RESTRICTED TO	30 MPH
SOIL TYPE (SUBGRADE)	A - 1
SOIL FACTOR	50
STRUCTURAL DESIGN	9 TON

STOPPING SIGHT DISTANCE BASED ON:  
3.5' HEIGHT OF EYE  
0.5' HEIGHT OF OBJECT

SPECIFICATION  
The Minnesota Department of Transportation "Standard Specifications for Construction", 1983 Edition, shall govern except as modified or altered by the special provisions.



INDEX OF SHEETS

- 1 TITLE SHEET & LAYOUT MAP
- 2 EST. QUANTITY, STREET SECTIONS & NOTES
- 3 LOCATION MAP
- 4 GRADING PLAN
- 5-6 SANITARY SEWER & WATERMAIN
- 7-8 STORM SEWER
- 9-10 STREET CONSTRUCTION
- 11-13 CROSS SECTIONS
- 14-17 STANDARD DETAILS

I HEREBY CERTIFY THAT THIS PLAN, SPECIFICATION, OR REPORT WAS PREPARED BY ME OR UNDER MY DIRECT SUPERVISION AND THAT I AM A DULY REGISTERED PROFESSIONAL ENGINEER UNDER THE LAWS OF THE STATE OF MINNESOTA.

*Terry J. Maurer*  
DATE 1/8/87 REG. NO. 15216

APPROVED *Terry J. Maurer* 1/8/87  
CITY ENGINEER DATE

RECOMMENDED FOR APPROVAL *Dmit O. Reed* 1-28-87  
DISTRICT STATE AID ENGINEER DATE

RECOMMENDED FOR APPROVAL *Julius Skallman* 3/4/87  
STATE PLANS & SPEC. ENGINEER DATE

APPROVED *Arthur W. Gray* 3/4/87  
STATE AID DIRECTOR DATE

RECORD PLAN NOV 1987